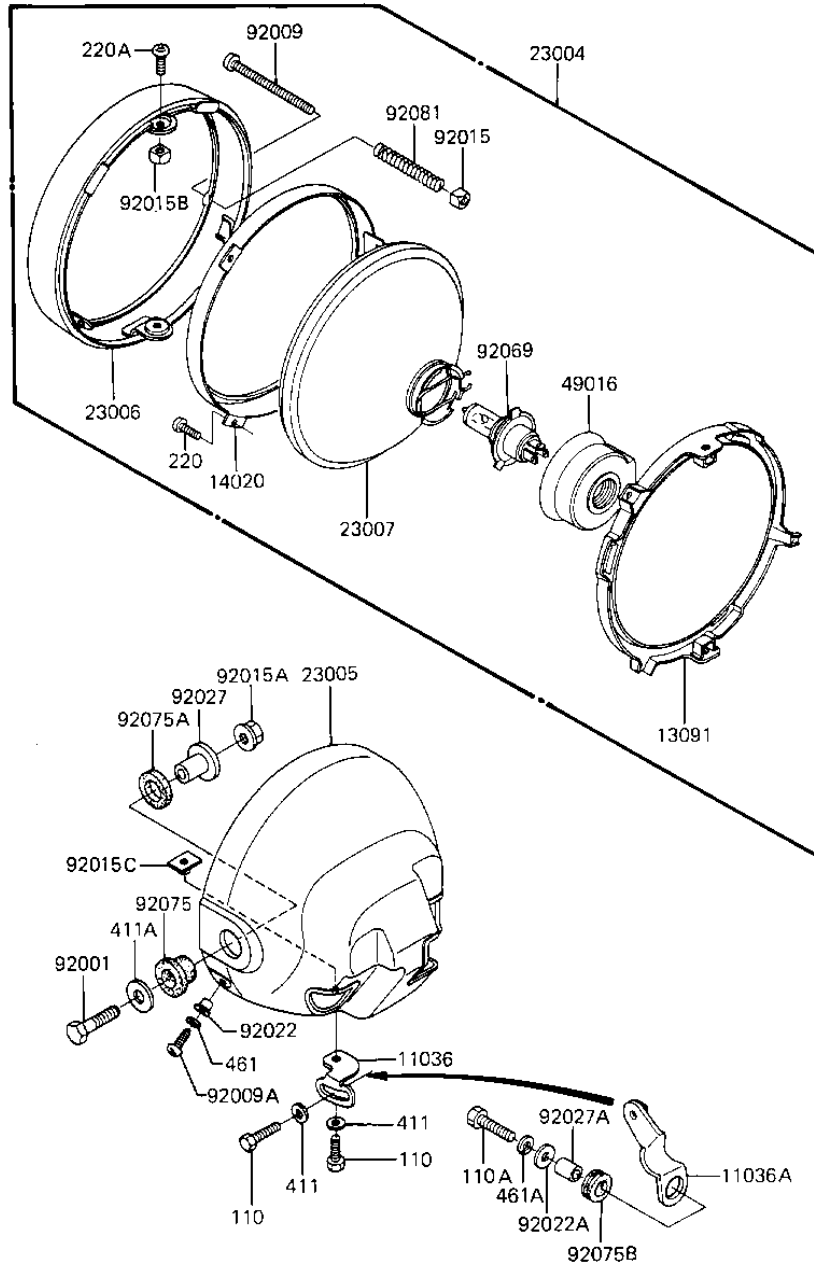


1983 1100 LTD Shaft PARTS DIAGRAM

HEADLIGHT

F2710-0160



1983 1100 LTD Shaft PARTS LIST

HEADLIGHT

ITEM NAME	PART NUMBER	QUANTITY
BRACKET-A,HEAD LAMP (Ref # 11036)	11036-1649	1
BRACKET-A,HEAD LAMP (Ref # 11036A)	11036-1737	1
HOLDER,HEAD LAMP (Ref # 13091)	13091-1160	1
RETAINER,HEAD LAMP (Ref # 14020)	14020-1018	1
LAMP-HEAD (Ref # 23004)	23004-1087	1
BODY-COMP-HEAD LAMP,C (Ref # 23005)	23005-1027	1
RIM-LAMP,CR PLATED (Ref # 23006)	23006-1020	1
LENS UNIT,HEAD LAMP (Ref # 23007)	23007-1009	1
DUST COVER (Ref # 49016)	49016-1016	1
BOLT 8X38 (Ref # 92001)	92001-1405	1
SCREW,FOCUS ADJU.4X52 (Ref # 92009)	92009-1033	1
SCREW-PAN HEAD,5MM (Ref # 92009A)	92011-024	1
NUT,4MM (Ref # 92015)	23020-018	1
NUT,8M/M (Ref # 92015A)	92015-1014	1
NUT,5MM (Ref # 92015B)	92015-1157	1
NUT-6MM,HEAD LAMP (Ref # 92015C)	92015-1231	1
WASHER (Ref # 92022)	23021-010	1
WASHER 6.5X20X1.6T (Ref # 92022A)	92022-125	1
COLLAR,HEAD LAMP FITT (Ref # 92027)	92027-1131	1
COLLAR,REAR FENDER (Ref # 92027A)	92027-162	1
BULB,12V-60/55W (Ref # 92069)	92069-1002	1
DAMPER,HEAD LAMP FITT (Ref # 92075)	92075-1109	1
DAMPER,HEAD LAMP FITT (Ref # 92075A)	92075-1110	1
DAMPER RUBBER,RR FENR (Ref # 92075B)	92075-209	1
SPRING FOCUS ADJUST (Ref # 92081)	23014-005	1
BOLT-UPSET 6X14 (Ref # 110)	112B0614	1
BOLT-UPSET (Ref # 110A)	112G0625	1
SCREW PAN HEAD 3X8 (Ref # 220)	220B0308	1
SCREW PAN HEAD 5X10 (Ref # 220A)	220B0510	1

1983 1100 LTD Shaft PARTS LIST

HEADLIGHT

ITEM NAME	PART NUMBER	QUANTITY
WASHER PLAIN 6MM (Ref # 411)	411B0600	1
WASHER,PLAIN,8MM (Ref # 411A)	411D0800	1
WASHER SPRING 5MM (Ref # 461)	461F0500	1
WASHER SPRING 6MM (Ref # 461A)	461F0600	1