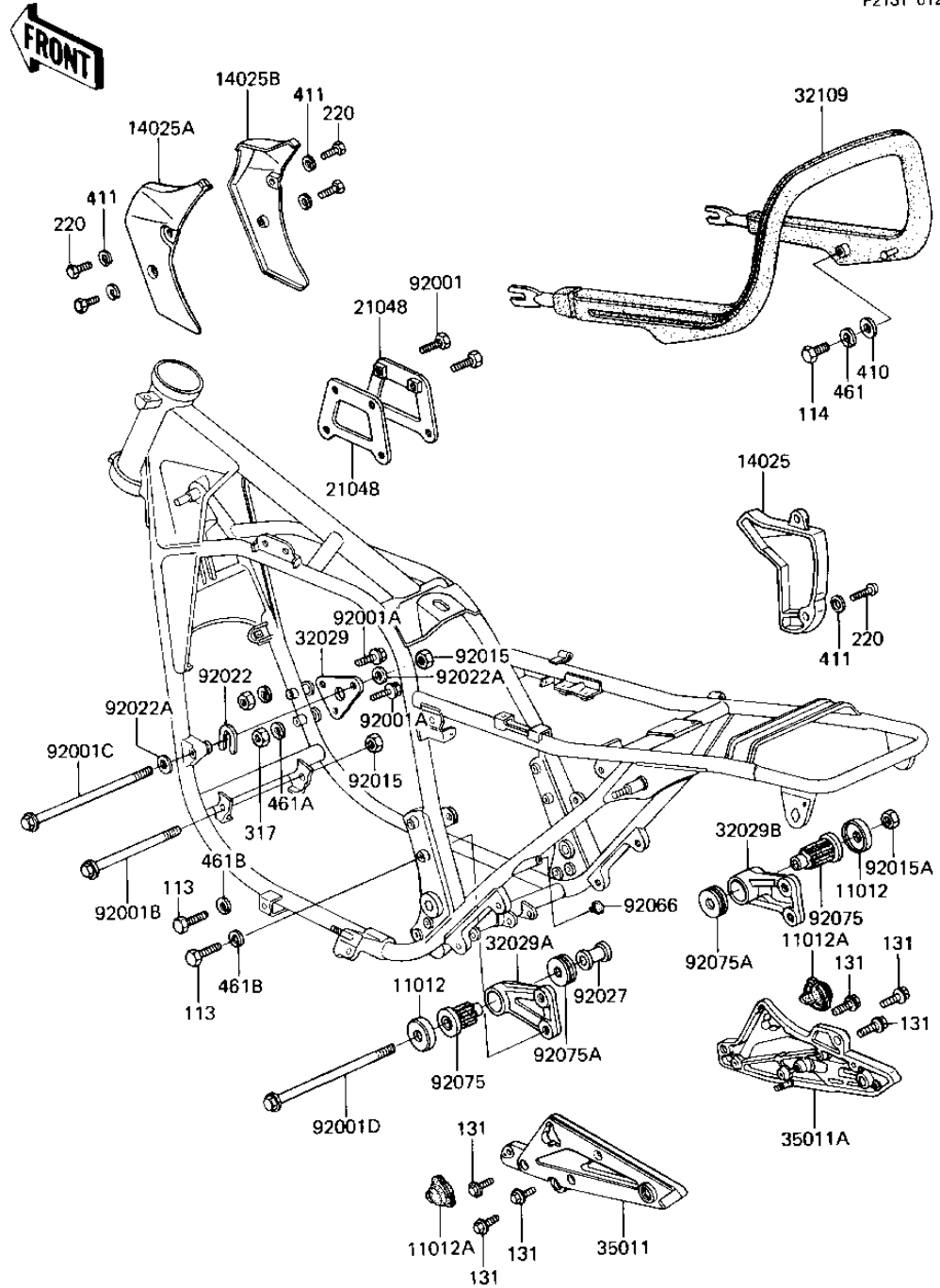


1983 1100 LTD Shaft PARTS DIAGRAM

FRAME FITTINGS

F2131-0120



1983 1100 LTD Shaft PARTS LIST

FRAME FITTINGS

ITEM NAME	PART NUMBER	QUANTITY
CAP,ENG MOUNT DAMPER (Ref # 11012)	11012-1182	1
CAP,MUFFLER STAY (Ref # 11012A)	11012-1240	1
COVER,ORNAMENT,RH (Ref # 14025)	14025-1375	1
COVER,FUEL TANK,LH,BL (Ref # 14025A)	14025-1388	1
COVER,FUEL TANK,RH,BL (Ref # 14025B)	14025-1389	1
PLATE,IGNITION COIL (Ref # 21048)	21048-1001	1
BRACKET-ENGINE (Ref # 32029)	32029-1142	1
BRACKET-ENGINE,RR,LH (Ref # 32029A)	32029-1163	1
BRACKET-ENGINE,RR,RH (Ref # 32029B)	32029-1164	1
GRIP-FRAME (Ref # 32109)	32109-1039	1
STAY,MUFFLER,LH (Ref # 35011)	35011-1146	1
STAY,MUFFLER,RH (Ref # 35011A)	35011-1147	1
BOLT,HEX HEAD,6MM (Ref # 92001)	92001-137	1
BOLT,FLANGED,8X65,BLA (Ref # 92001A)	92001-1616	1
BOLT,FLANGED,10X155,B (Ref # 92001B)	92001-1620	1
BOLT,FLANGED,10X320,B (Ref # 92001C)	92001-1624	1
BOLT,FLANGED,10X320,B (Ref # 92001D)	92001-1625	1
NUT,LOCK,10MM,BLACK (Ref # 92015)	92015-1189	1
NUT,LOCK,12MM,BLACK (Ref # 92015A)	92015-1190	1
WASHER,U FORMED (Ref # 92022)	92022-1259	1
WASHER,PLAIN (Ref # 92022A)	92022-1022	1
COLLAR,13X25X39.5,BLA (Ref # 92027)	92027-1433	1
PLUG,FRAME END (Ref # 92066)	92066-1034	1
DAMPER,ENG MOUNT,RR,I (Ref # 92075)	92075-1330	1
DAMPER,ENG MOUNT,RR,S (Ref # 92075A)	92075-1331	1
BOLT-SMALL, 10X45,BLK (Ref # 113)	113J1045	1
BOLT-SMALL-UPSET,8X16 (Ref # 114)	115G0816	1
BOLT-FLANGED,8X35,BLA (Ref # 131)	131J0835	1
SCREW-PAN-CROS, 6X14 (Ref # 220)	220C0614	1

1983 1100 LTD Shaft PARTS LIST

FRAME FITTINGS

ITEM NAME	PART NUMBER	QUANTITY
NUT-HEX-SMALL,8MM,BLA (Ref # 317)	317C0800	1
WASHER PLAIN 8MM (Ref # 410)	410B0800	1
WASHER PLAIN (Ref # 411)	411F0600	1
WASHER SPRING 8MM (Ref # 461)	461F0800	1
WASHER-SPRING,8MM,BLA (Ref # 461A)	461K0800	1
WASHER-SPRING,10MM (Ref # 461B)	461K1000	1