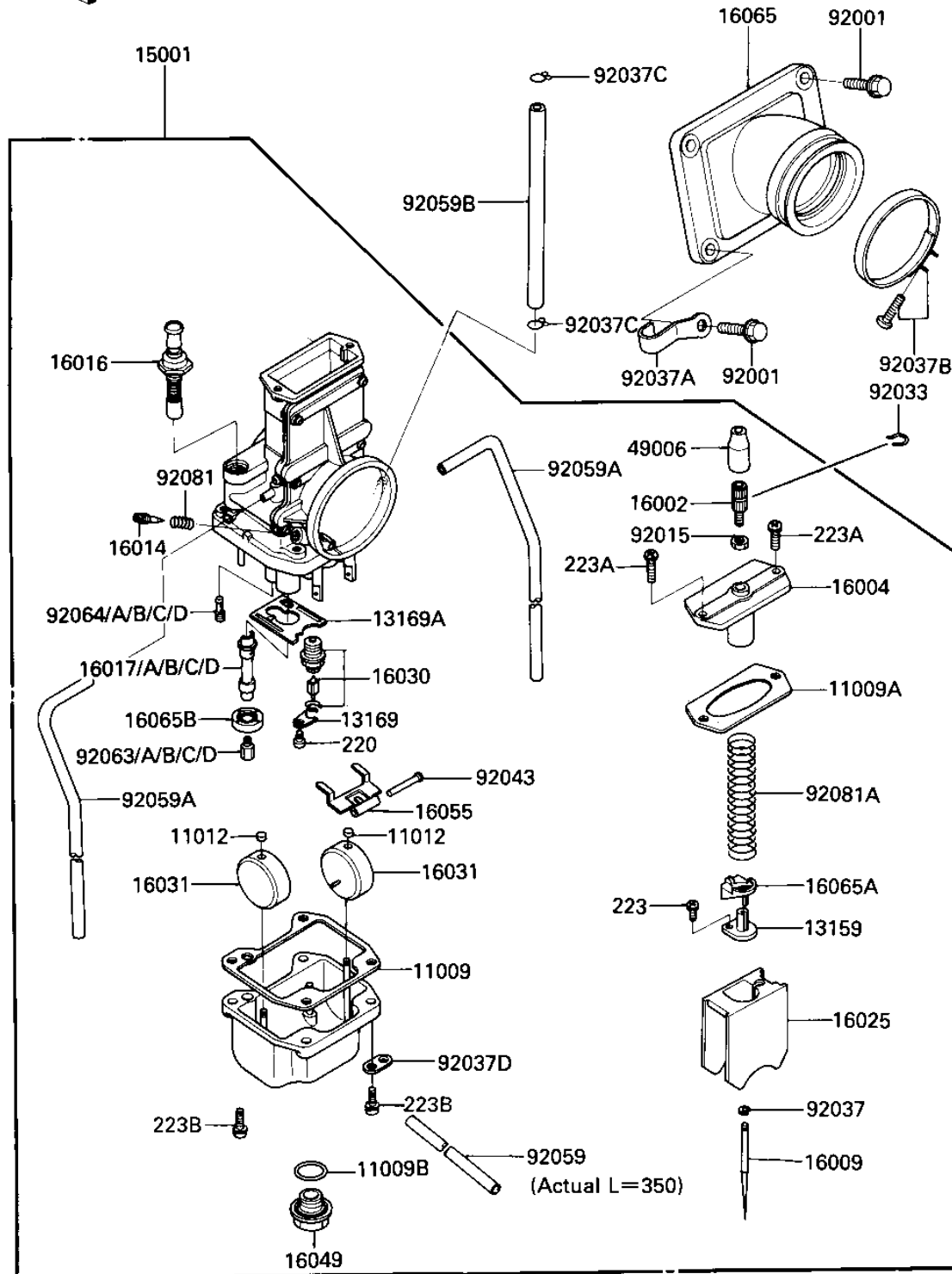


## 1984 KX™500 PARTS DIAGRAM

CARBURETOR ('84 A2)

E1611-0145



## 1984 KX™500 PARTS LIST

CARBURETOR ('84 A2)

ITEM NAME	PART NUMBER	QUANTITY
GASKET,FLOAT CHAMBER (Ref # 11009)	11009-1275	1
GASKET,CHAMBER CAP (Ref # 11009A)	11009-1406	1
GASKET-COVER (Ref # 11009B)	16038-009	1
CAP,FLOAT (Ref # 11012)	11012-1047	1
CONNECTOR (Ref # 13159)	13159-1051	1
PLATE, LOCK (Ref # 13169)	13169-1190	1
PLATE,FLOAT CHAMBER (Ref # 13169A)	13169-1807	1
CARBURETOR (Ref # 15001)	16001-1923	1
CABLE ADJUSTER (Ref # 16002)	16002-011	1
CAP-CHAMBER,MIXING (Ref # 16004)	16004-1051	1
NEEDLE-JET,6EL4 (Ref # 16009)	16009-1224	1
SCREW-PILOT AIR (Ref # 16014)	16014-1031	1
PLUNGER,STARTER (Ref # 16016)	16016-1026	1
JET-NEEDLE,R-6 (Ref # 16017)	16017-1214	1
JET-NEEDLE,R-8 (Ref # 16017A)	16017-1233	1
JET-NEEDLE,R-2 (Ref # 16017B)	16017-1234	1
JET-NEEDLE,R-0 (Ref # 16017C)	16017-1235	1
JET-NEEDLE,R-4 (Ref # 16017D)	16017-1236	1
VALVE-THROTTLE,CA2.0 (Ref # 16025)	16025-1104	1
VALVE-FLOAT,3.3 (Ref # 16030)	16030-1020	1
FLOAT (Ref # 16031)	16031-029	1
COVER,MAIN JET (Ref # 16049)	16049-006	1
ARM,FLOAT (Ref # 16055)	16055-009	1
HOLDER-CARBURETOR (Ref # 16065)	16065-1101	1
HOLDER-CARBURETOR,THR (Ref # 16065A)	16065-1113	1
HOLDER-CARBURETOR,NEE (Ref # 16065B)	16065-1114	1
BOOT,CARBURETOR (Ref # 49006)	49006-1169	1
BOLT-FLANGED-SMALL (Ref # 92001)	132G0620	1
NUT-CABLE ADJUST LOCK (Ref # 92015)	16003-006	1

## 1984 KX™500 PARTS LIST

CARBURETOR ('84 A2)

ITEM NAME	PART NUMBER	QUANTITY
CIRCLIP (Ref # 92033)	92036-018	1
CIRCLIP (Ref # 92037)	16008-010	1
CLAMP CABLE (Ref # 92037A)	92037-016	1
CLAMP,CARBURETOR HOLD (Ref # 92037B)	92037-1313	1
CLAMP,CHAIN OILER (Ref # 92037C)	92037-147	1
CLAMP (Ref # 92037D)	92037-1474	1
PIN,FLOAT (Ref # 92043)	16032-008	1
TUBE,3.5X6.5X350 (Ref # 92059)	92059-1211	1
TUBE,4X7X400,OVERFLOW (Ref # 92059A)	92059-1292	1
TUBE,6.5X11.5X260 (Ref # 92059B)	92059-1392	1
JET-MAIN NO 300A (Ref # 92063)	92063-045	1
JET-MAIN NO 310A (Ref # 92063A)	92063-046	1
JET-MAIN NO 320A (Ref # 92063B)	92063-047	1
JET-MAIN NO 330A (Ref # 92063C)	92063-048	1
MAIN JET NO 340A (Ref # 92063D)	92063-049	1
JET-PILOT NO 40 (Ref # 92064)	92064-024	1
PILOT JET #60A (Ref # 92064A)	92064-031	1
JET-PILOT NO 45 (Ref # 92064B)	92064-044	1
PILOT JET,#50 (Ref # 92064C)	92064-1005	1
JET-PILOT,#55 (Ref # 92064D)	92064-1006	1
SPRING-THR STOP SCREW (Ref # 92081)	16022-007	1
SPRING,THROTTLE VALVE (Ref # 92081A)	92081-1687	1
SCREW PAN HEAD 4X6 (Ref # 220)	220B0406	1
SCREW-PAN-WS-CROS (Ref # 223)	223B0310	1
SCREW-PAN HEAD,4X12MM (Ref # 223A)	223B0412	1
SCREW-PAN-WS-CROS (Ref # 223B)	223B0518	1