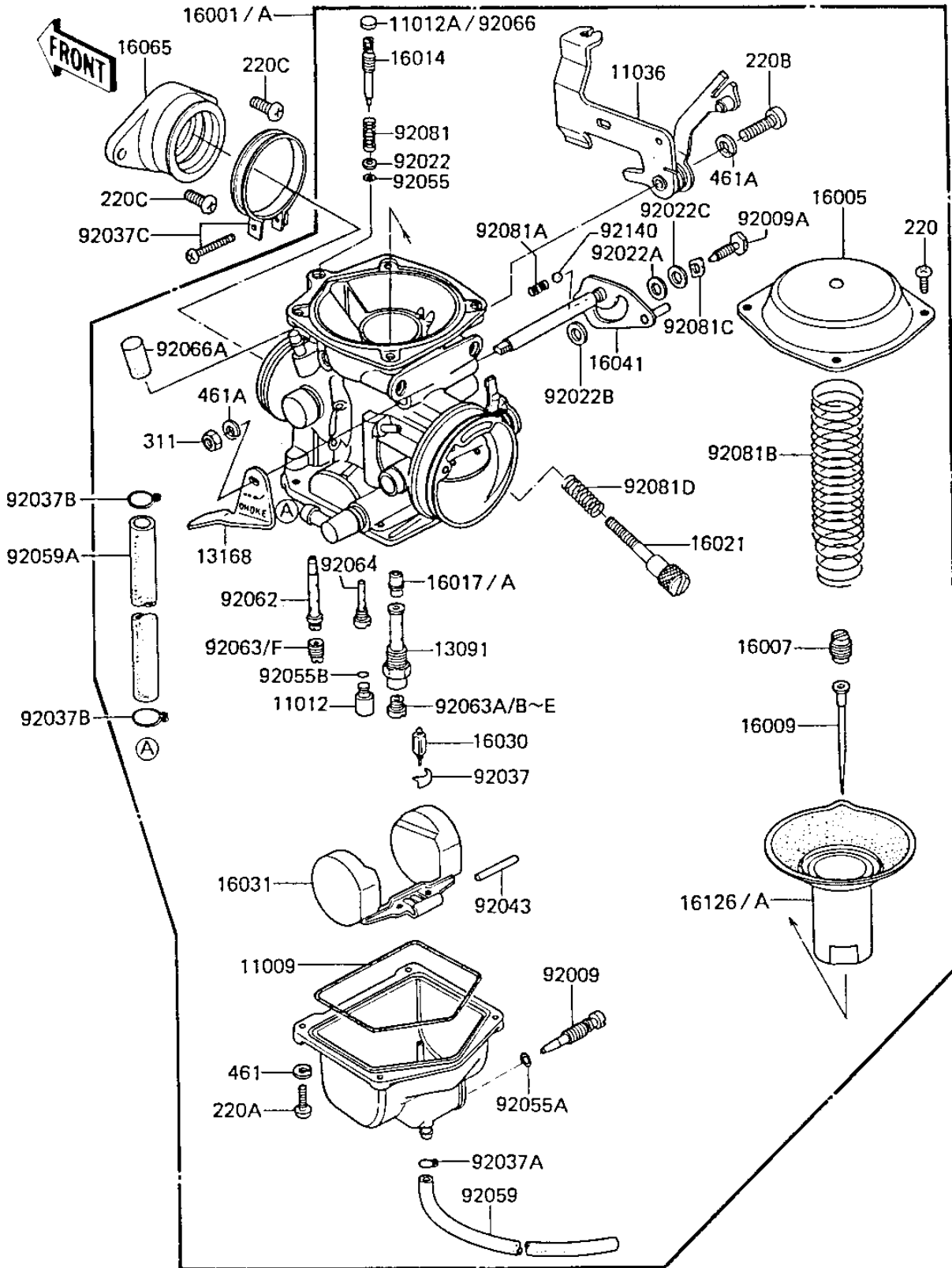


## 1983 KL250 PARTS DIAGRAM

CARBURETOR



## 1983 KL250 PARTS LIST

### CARBURETOR

| ITEM NAME                                   | PART NUMBER | QUANTITY |
|---|-------------|----------|
| "O" RING,FLOAT BALL (Ref # 11009)           | 16019-024   | 1        |
| CAP,POLYESTER (Ref # 11012)                 | 11012-1128  | 1        |
| CAP,PILOT AIR SCREW (Canada) (Ref # 11012A) | 11012-1289  | 1        |
| BRACKET-A,THROTTLE CA (Ref # 11036)         | 11036-1933  | 1        |
| HOLDER,NEEDLE JET (Ref # 13091)             | 13091-1050  | 1        |
| LEVER,CHOKE (Ref # 13168)                   | 13168-1065  | 1        |
| CARBURETOR (Canada) (Ref # 16001)           | 16001-1779  | 1        |
| CARBURETOR (Ref # 16001A)                   | 16001-1780  | 1        |
| TOP,MIXING CHAMBER (Ref # 16005)            | 16005-1012  | 1        |
| SCREW,NEEDLE SET (Ref # 16007)              | 16007-1022  | 1        |
| NEEDLE-JET,NO1B (Ref # 16009)               | 16009-1138  | 1        |
| SCREW,PILOT ADJUST (Ref # 16014)            | 16014-1011  | 1        |
| NEEDLE JET (Ref # 16017)                    | 16017-1059  | 1        |
| UNAVAILABLE IN PRICE BOOK (Ref # 16017A)    | 16017-1061  | 1        |
| SCREW,THROTTLE STOP (Ref # 16021)           | 16021-1031  | 1        |
| FLOAT VALVE (Ref # 16030)                   | 16030-1007  | 1        |
| FLOAT (Ref # 16031)                         | 16031-1001  | 1        |
| SHAFT-CARBURETOR,CHOK (Ref # 16041)         | 16041-1030  | 1        |
| HOLDER-CARBURETOR (Ref # 16065)             | 16065-1063  | 1        |
| VALVE (Ref # 16126)                         | 16126-1057  | 2        |
| SCREW,DRAIN (Ref # 92009)                   | 92009-1095  | 1        |
| SCREW,LINK SHAFT (Ref # 92009A)             | 92009-1183  | 1        |
| WASHER,PLAIN (Ref # 92022)                  | 92022-1003  | 1        |
| WASHER,6.1X11X0.8,POL (Ref # 92022A)        | 92022-1199  | 1        |
| WASHER,6.4X9.4X0.8,PL (Ref # 92022B)        | 92022-1200  | 1        |
| WASHER,6.5X11X1.2,STL (Ref # 92022C)        | 92022-1207  | 1        |
| CLIP,FLOAT VALVE (Ref # 92037)              | 16044-007   | 1        |
| CLAMP,TUBE,OVERFLOW (Ref # 92037A)          | 92037-1142  | 1        |
| CLAMP,TUBE (Ref # 92037B)                   | 92037-1682  | 1        |

## 1983 KL250 PARTS LIST

### CARBURETOR

| ITEM NAME                           | PART NUMBER | QUANTITY |
|-------------------------------------|-------------|----------|
| CLAMP,53M/M (Ref # 92037C)          | 92037-201   | 1        |
| FLOAT PIN (Ref # 92043)             | 92043-1002  | 1        |
| O RING,PILOT ADJ (Ref # 92055)      | 92055-1002  | 1        |
| "O" RING,DRAIN SCREW (Ref # 92055A) | 92055-1053  | 1        |
| "O" RING (Ref # 92055B)             | 92055-1088  | 1        |
| HOSE,FUEL OVERFLOW (Ref # 92059)    | 92059-1046  | 1        |
| TUBE,5.3X10.5X140 (Ref # 92059A)    | 92059-1267  | 1        |
| NOZZLE,MAIN (Ref # 92062)           | 92062-1001  | 1        |
| MAIN JET,PRI,#68 (Ref # 92063)      | 92063-1050  | 1        |
| JET-MAIN,#118 (Ref # 92063A)        | 92063-1071  | 1        |
| JET-MAIN #110 (Ref # 92063B)        | 92063-1114  | 1        |
| JET-MAIN #108 (Ref # 92063C)        | 92063-1116  | 1        |
| JET-MAIN #112 (Ref # 92063D)        | 92063-1117  | 1        |
| JET-MAIN #115 (Ref # 92063E)        | 92063-1118  | 1        |
| JET-MAIN,PRI,#72 (Ref # 92063F)     | 92063-1193  | 1        |
| PILOT JET,#35 (Ref # 92064)         | 92064-1001  | 1        |
| PLUG,PILOT SCREW (Ref # 92066)      | 92066-1051  | 1        |
| RUBBER PLUG (Ref # 92066A)          | 92068-006   | 1        |
| SPRING,PIROT ADJ SCRW (Ref # 92081) | 92081-1002  | 1        |
| SPRING (Ref # 92081A)               | 92081-1249  | 1        |
| SPRING (Ref # 92081B)               | 92081-1257  | 1        |
| SPRING,WAVED WASHER (Ref # 92081C)  | 92081-1262  | 1        |
| SPRING,STOP SCREW (Ref # 92081D)    | 92081-1545  | 1        |
| BALL,STEEL,3/16" (Ref # 92140)      | 92140-1004  | 1        |
| SCREW PAN HEAD 4X8 (Ref # 220)      | 220B0408    | 1        |
| SCREW-PAN-CRSOSS,4X12 (Ref # 220A)  | 220B0412    | 1        |
| SCREW PAN HEAD 5X20 (Ref # 220B)    | 220B0520    | 1        |
| SCREW PAN HEAD 6X14 (Ref # 220C)    | 220B0614    | 1        |
| NUT,5MM (Ref # 311)                 | 311B0500    | 1        |

## 1983 KL250 PARTS LIST

CARBURETOR

| ITEM NAME                      | PART NUMBER | QUANTITY |
|--------------------------------|-------------|----------|
| WASHER SPRING 4MM (Ref # 461)  | 461F0400    | 1        |
| WASHER SPRING 5MM (Ref # 164A) | 461F0500    | 1        |