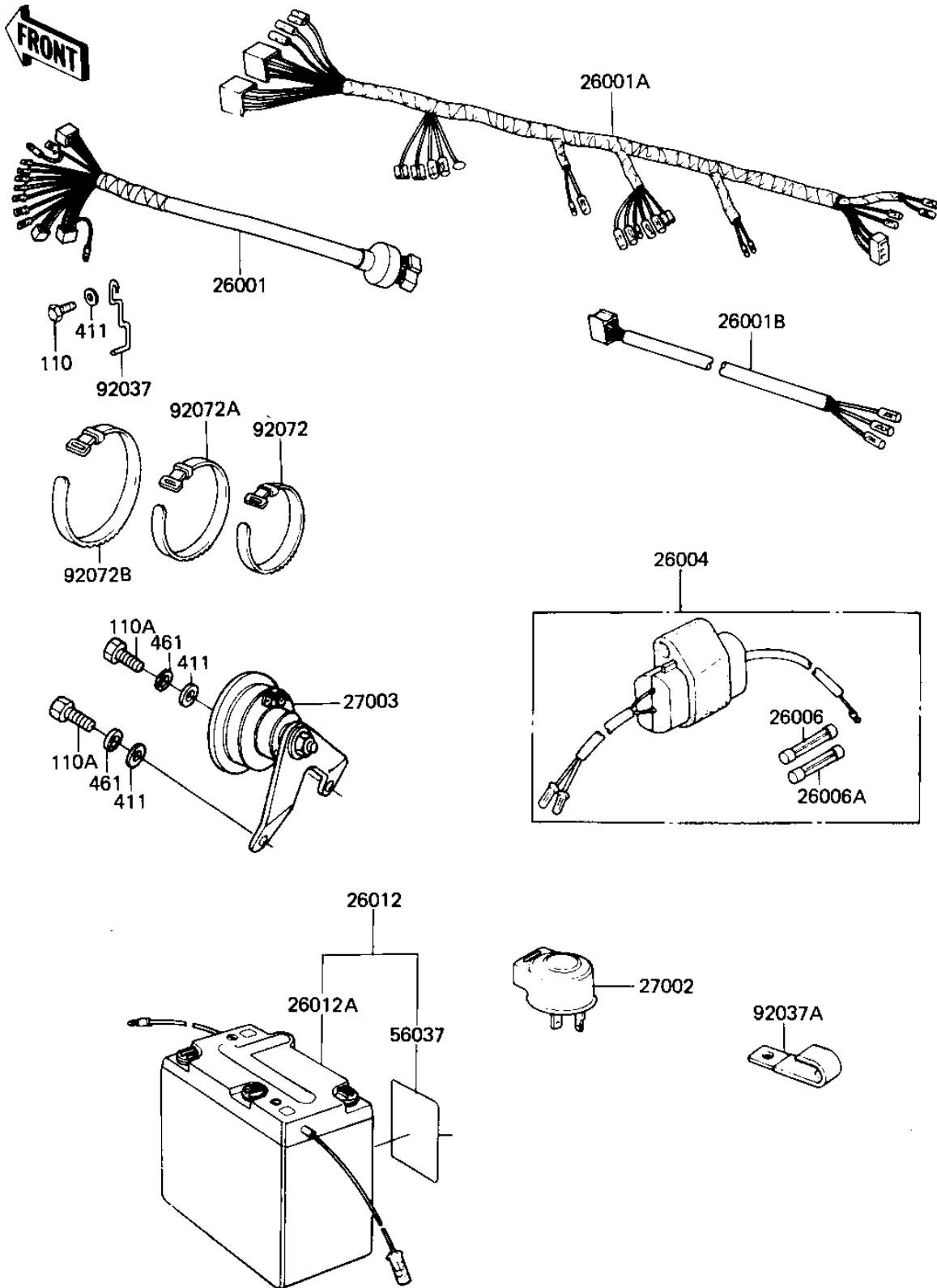


## 1982 KL250 PARTS DIAGRAM

CHASSIS ELECTRICAL EQUIPMENT

F2760-0109



## 1982 KL250 PARTS LIST

### CHASSIS ELECTRICAL EQUIPMENT

ITEM NAME	PART NUMBER	QUANTITY
WIRING HARNESS,FR (Ref # 26001)	26001-1250	1
HARNESS (Ref # 26001A)	26001-1310	1
WIRING HARNESS,TL LMP (Ref # 26001B)	26002-046	1
FUSE ASSY (Ref # 26004)	26004-1010	1
FUSE,10A,L=30M/M (Ref # 26006)	26006-1002	1
FUSE,15A,L=30M/M (Ref # 26006A)	26006-1003	1
YUA BAT 6N6-1D-2 (Ref # 26012)	K26012-034	1
UNAVAILABLE IN PRICE BOOK (Ref # 26012A)	26012-1003	1
RELAY-TURN SIGNAL (Ref # 27002)	27002-013	1
HORN (Ref # 27003)	27003-1008	1
LABEL-WARNING,BATTERY (Ref # 56037)	56040-1036	1
CLAMP,HEAD LAMP HARNS (Ref # 92037)	92037-1062	1
CLAMP,WIRING HARNESS (Ref # 92037A)	92037-1069	1
BAND,SHORT (Ref # 92072)	92072-030	1
BAND,MIDDLE (Ref # 92072A)	92072-031	1
BAND,LONG (Ref # 92072B)	92072-032	1
BOLT-UPSET,6X12 (Ref # 110)	112G0612	1
BOLT-UPSET,6X16 (Ref # 110A)	112G0616	1
WASHER PLAIN 6MM (Ref # 411)	411B0600	1
WASHER SPRING 6MM (Ref # 461)	461F0600	1