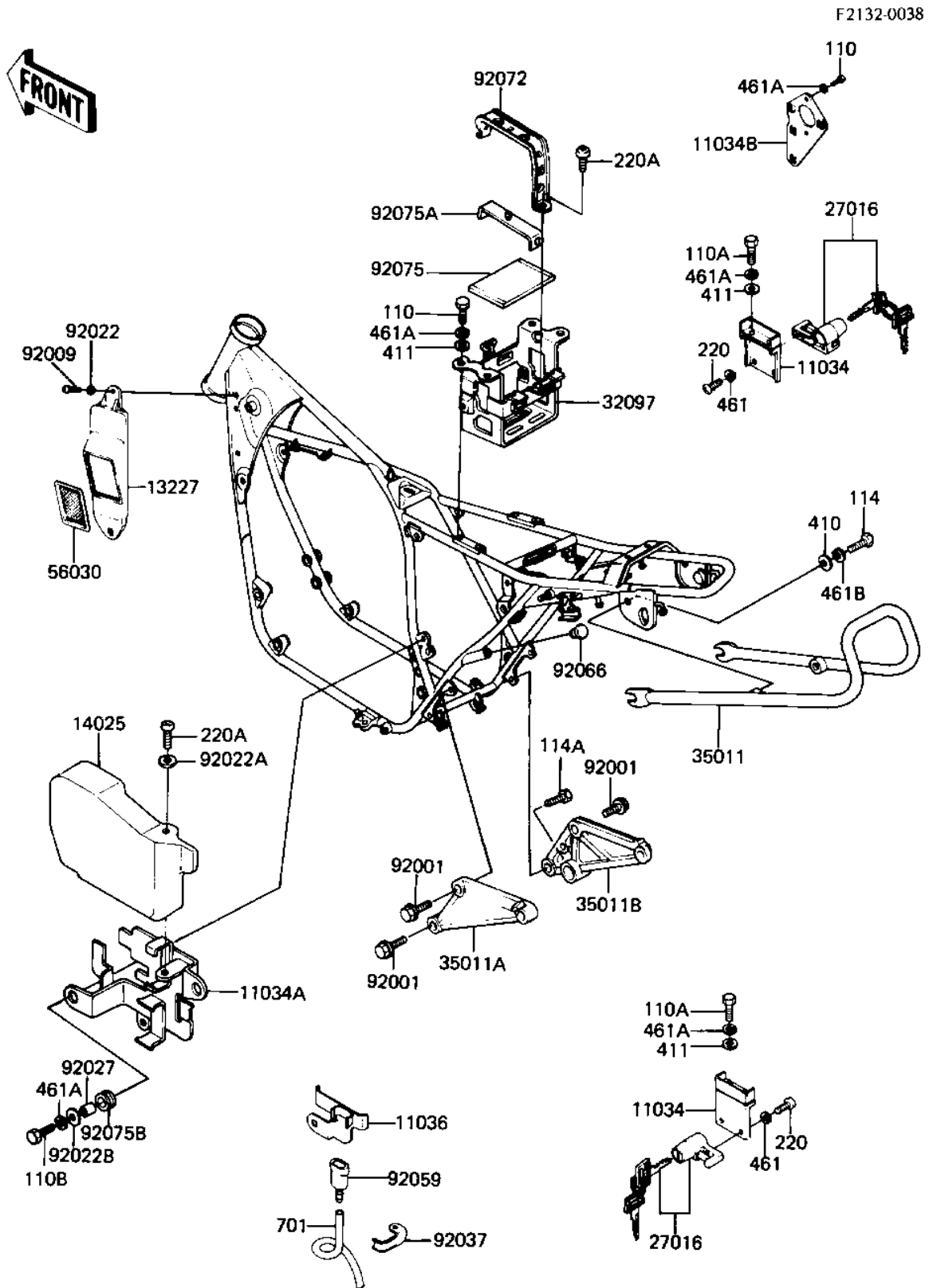


## 1982 550 LTD PARTS DIAGRAM

BATTERY CASE/ELECTRO BRACKET ('82-'83 C3)



## 1982 550 LTD PARTS LIST

BATTERY CASE/ELECTRO BRACKET ('82-'83 C3)

| ITEM NAME                           | PART NUMBER | QUANTITY |
|-------------------------------------|-------------|----------|
| BRACKET,HELMET LOCK (Ref # 11034)   | 11034-1926  | 1        |
| BRACKET,ELECTRO BASE (Ref # 11034A) | 11034-1975  | 1        |
| BRACKET,CDI UNIT (Ref # 11034B)     | 11034-1985  | 1        |
| BRACKET,BATTERY (Ref # 11036)       | 11036-1470  | 1        |
| HOUSING,LABEL (Ref # 13227)         | 13227-1001  | 1        |
| COVER,ELECTRO (Ref # 14025)         | 14025-1295  | 1        |
| LOCK ASSY,HELMET (Ref # 27016)      | 27016-5038  | 1        |
| CASE-BATTERY (Ref # 32097)          | 32097-1046  | 1        |
| STAY,REAR (Ref # 35011)             | 35011-1050  | 1        |
| STAY,MUFFLER,LH (Ref # 35011A)      | 35011-1076  | 1        |
| STAY,MUFFLER,RH (Ref # 35011B)      | 35011-1077  | 1        |
| LABEL (Ref # 56030)                 | 56030-1006  | 1        |
| BOLT,8X28 (Ref # 92001)             | 92001-1095  | 1        |
| SCREW,5X16,BLACK (Ref # 92009)      | 92009-1099  | 1        |
| WASHER,5.2X16X16X1.2T (Ref # 92022) | 25009-004   | 1        |
| WASHER PLAIN (Ref # 92022A)         | 92022-024   | 1        |
| WASHER 6.5X20X1.6T (Ref # 92022B)   | 92022-125   | 1        |
| COLLAR (Ref # 92027)                | 92027-165   | 1        |
| CLAMP,BREATHER TUBE (Ref # 92037)   | 92037-1246  | 1        |
| CONNECTOR PIPE (Ref # 92059)        | 92059-101   | 1        |
| PLUG,9.5X8 (Ref # 92066)            | 92066-1077  | 1        |
| BAND,BATTERY (Ref # 92072)          | 92072-1019  | 1        |
| DAMPER,BATTERY BASE (Ref # 92075)   | 92075-1076  | 1        |
| DAMPER,BATTERY BAND (Ref # 92075A)  | 92075-1113  | 1        |
| DAMPER RUBBER (Ref # 92075B)        | 92075-149   | 1        |
| BOLT-UPSET,6X12 (Ref # 110)         | 112G0612    | 1        |
| BOLT-UPSET 6X14 (Ref # 110A)        | 112B0614    | 1        |
| BOLT-UPSET,6X20 (Ref # 110B)        | 112G0620    | 1        |
| BOLT-SMALL-UPSET,8X18 (Ref # 114)   | 115G0818    | 1        |

## 1982 550 LTD PARTS LIST

BATTERY CASE/ELECTRO BRACKET ('82-'83 C3)

| ITEM NAME                        | PART NUMBER | QUANTITY |
|----------------------------------|-------------|----------|
| BOLT-HEX HEAD 8X30 (Ref # 114A)  | 114G0830    | 1        |
| SCREW PAN HEAD 5X8 (Ref # 220)   | 220B0508    | 1        |
| SCREW PAN HEAD 6X12 (Ref # 220A) | 220B0612    | 1        |
| WASHER PLAIN 8MM (Ref # 410)     | 410B0800    | 1        |
| WASHER PLAIN 6MM (Ref # 411)     | 411B0600    | 1        |
| WASHER SPRING 5MM (Ref # 461)    | 461F0500    | 1        |
| WASHER SPRING 6MM (Ref # 461A)   | 461F0600    | 1        |
| WASHER SPRING 8MM (Ref # 461B)   | 461F0800    | 1        |
| TUBE-PVC,6X530 (Ref # 701)       | 701Q06530   | 1        |