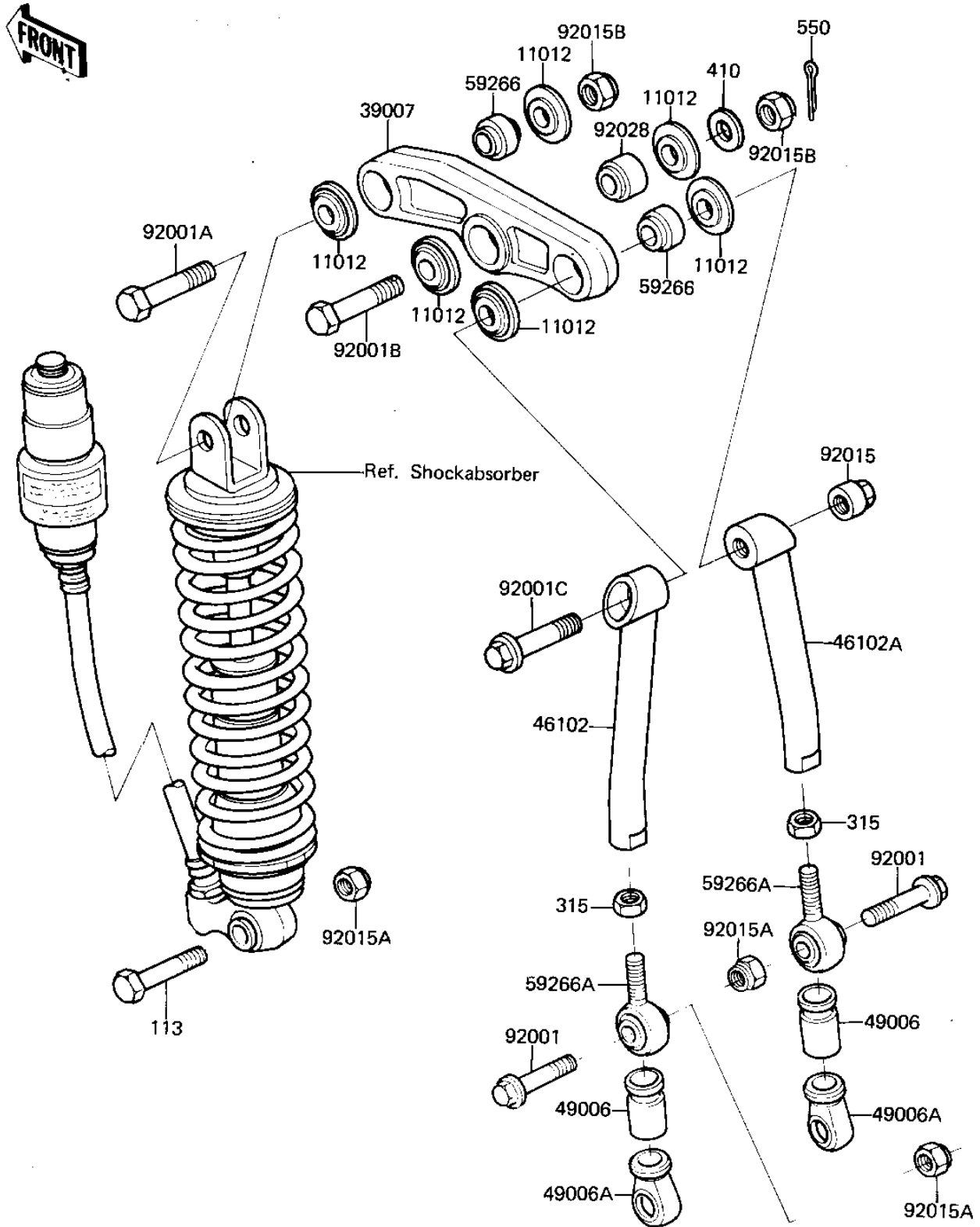


1981 KX™125 PARTS DIAGRAM

REAR SUSPENSION ('81 A7)

F2150-0002



1981 KX™125 PARTS LIST

REAR SUSPENSION ('81 A7)

ITEM NAME	PART NUMBER	QUANTITY
CAP,SUSPENSION ARM (Ref # 11012)	11012-1117	1
ARM,SUSPENSION (Ref # 39007)	39007-1002	1
ROD,UNITRAK,LH (Ref # 46102)	46102-1020	1
ROD,UNITRAK,LH (Ref # 46102A)	46102-1021	1
BOOT,BALL JOINT (Ref # 49006)	49006-1045	1
BOOT,BALL JOINT (Ref # 49006A)	49006-1046	1
JOINT,BALL,SUSPENSION (Ref # 59266)	59266-1001	1
JOINT,BALL,SUSPENSION (Ref # 59266A)	59266-1002	1
BOLT,HEX HEAD,12X48 (Ref # 92001)	92001-1297	1
BOLT,HEX HEAD,14X50 (Ref # 92001A)	92001-1317	1
BOLT,HEX HEAD,14X60 (Ref # 92001B)	92001-1335	1
BOLT,14X60 (Ref # 92001C)	92001-1344	1
NUT,UNITRAK LINK (Ref # 92015)	92015-1123	1
NUT-LOCK,12MM (Ref # 92015A)	92019-009	1
NUT-LOCK,14MM (Ref # 92015B)	92019-011	1
BUSHING,SUSPENSION AM (Ref # 92028)	92028-1087	1
BOLT,HEX HEAD,12X55 (Ref # 113)	113P1255A	1
NUT-HEX-FINE,12MM (Ref # 315)	315B1200	1
WASHER PLAIN 14MM (Ref # 410)	410B1400	1
PIN COTTER 2.5X25 (Ref # 550)	550D2525	1