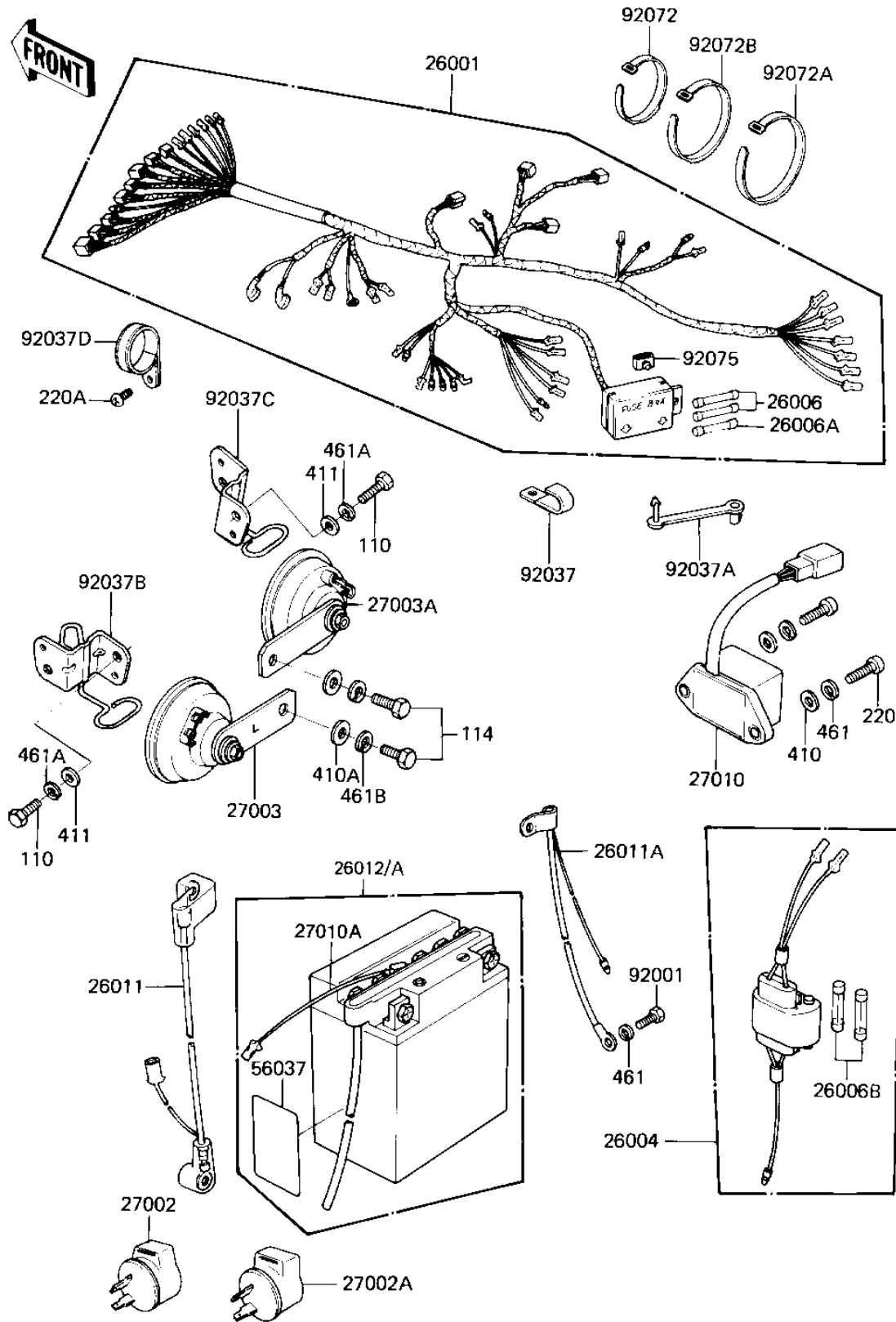


1982 GPz 750 PARTS DIAGRAM

CHASSIS ELECTRICAL EQUIPMENT



1982 GPz 750 PARTS LIST

CHASSIS ELECTRICAL EQUIPMENT

| ITEM NAME | PART NUMBER | QUANTITY |
|--------------------------------------|-------------|----------|
| HARNESS,MAIN,W/FUSE (Ref # 26001) | 26001-1371 | 1 |
| FUSE-ASSY,ACCESSORY (Ref # 26004) | 26004-1014 | 1 |
| FUSE 10A (Ref # 26006) | 26006-003 | 1 |
| FUSE-20A (Ref # 26006A) | 26006-005 | 1 |
| FUSE,10A,L=30M/M (Ref # 26006B) | 26006-1002 | 1 |
| WIRE-LEAD,BATTERY (Ref # 26011) | 26011-1158 | 1 |
| WIRE-LEAD,BATTERY GRO (Ref # 26011A) | 26011-1159 | 1 |
| FB BAT FB12A-A SENSOR (Ref # 26012) | 26012-1050 | 1 |
| 26012-1140 (Canada) (Ref # 26012A) | 26012-1051 | 1 |
| RELAY-TURN SIGNAL (Ref # 27002) | 27002-011 | 1 |
| RELAY,TURN SIGNAL (Ref # 27002A) | 27002-016 | 1 |
| HORN,LH (Ref # 27003) | 27003-1057 | 1 |
| HORN,RH (Ref # 27003A) | 27003-1058 | 1 |
| SWITCH,RESERVE LIGHTI (Ref # 27010) | 27010-1069 | 1 |
| SWITCH,BATTERY,L=200 (Ref # 27010A) | 27010-1177 | 1 |
| LABEL-WARNING,BATTERY (Ref # 56037) | 56040-1036 | 1 |
| BOLT,HEX HEAD,6MM (Ref # 92001) | 92001-137 | 1 |
| CLAMP,WIRING HARNESS (Ref # 92037) | 92037-1069 | 1 |
| CLAMP (Ref # 92037A) | 92037-1290 | 1 |
| CLAMP,HORN LEAD WIRE, (Ref # 92037B) | 92037-1322 | 1 |
| CLAMP,HORN LEAD WIRE, (Ref # 92037C) | 92037-1323 | 1 |
| CLAMP,WIRING HARNESS (Ref # 92037D) | 92037-1330 | 1 |
| BAND,MIDDLE (Ref # 92072) | 92072-031 | 1 |
| BAND,LONG (Ref # 92072A) | 92072-032 | 1 |
| BAND,WIRING HARNESS (Ref # 92072B) | 92072-056 | 1 |
| DAMPER RUBBER,FUSE (Ref # 92075) | 92075-279 | 1 |
| BOLT,5X14,BLACK (Ref # 110) | 110C0514A | 1 |
| BOLT-SMALL,8X14 (Ref # 114) | 114C0814 | 1 |
| SCREW PAN HEAD 6X20 (Ref # 220) | 220B0620 | 1 |

1982 GPz 750 PARTS LIST

CHASSIS ELECTRICAL EQUIPMENT

| ITEM NAME | PART NUMBER | QUANTITY |
|------------------------------------|-------------|----------|
| SCREW-PAN-CROS (Ref # 220A) | 220C0510 | 1 |
| WASHER PLAIN 6MM (Ref # 410) | 410B0600 | 1 |
| WASHER,PLAIN,8MM (Ref # 410A) | 92022-1554 | 1 |
| WASHER PLAIN 5MM (Ref # 411) | 411B0500 | 1 |
| WASHER SPRING 6MM (Ref # 461) | 461F0600 | 1 |
| WASHER-SPRING,5MM,BLA (Ref # 461A) | 461K0500 | 1 |
| WASHER-SPRING,8MM,BLA (Ref # 461B) | 461K0800 | 1 |