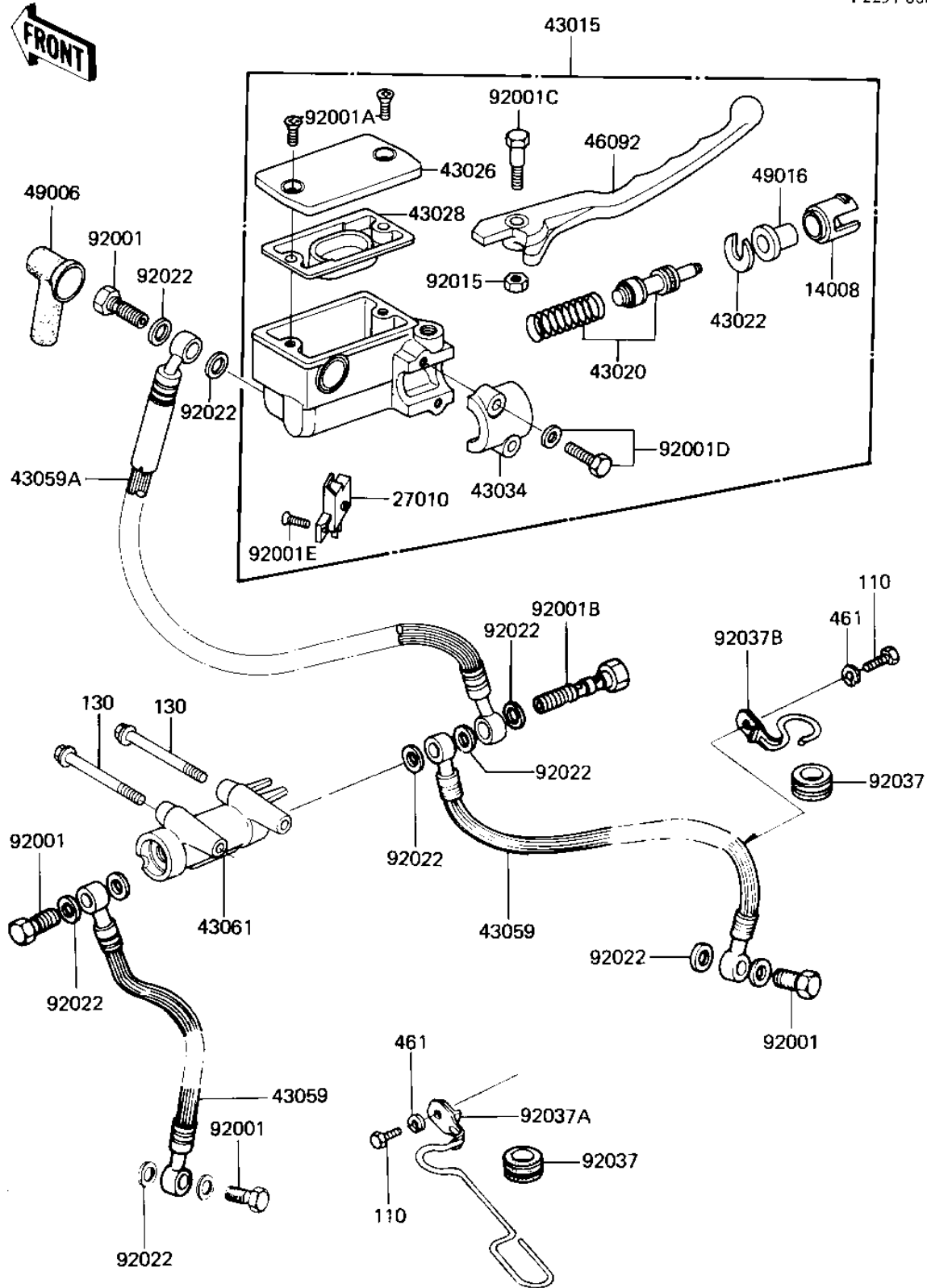


1982 GPz 750 PARTS DIAGRAM

FRONT MASTER CYLINDER

F2291-0066



1982 GPz 750 PARTS LIST

FRONT MASTER CYLINDER

| ITEM NAME | PART NUMBER | QUANTITY |
|--------------------------------------|-------------|----------|
| LINER,PISTON (Ref # 14008) | 14008-1035 | 1 |
| SWITCH,BRAKE (Ref # 27010) | 27010-1056 | 1 |
| CYLINDER-ASSY-MASTER (Ref # 43015) | 43015-1085 | 1 |
| PISTON-COMP-BRAKE (Ref # 43020) | 43020-1079 | 1 |
| STOPPER-BRAKE,PISTON (Ref # 43022) | 43022-1009 | 1 |
| CAP-BRAKE,FRONT (Ref # 43026) | 43026-1017 | 1 |
| DIAPHRAGM,MASTER CYL1 (Ref # 43028) | 43028-1029 | 1 |
| HOLDER-BRAKE,MASTER C (Ref # 43034) | 43034-1013 | 1 |
| HOSE-BRAKE,FR,L=520 (Ref # 43059) | 43059-1189 | 1 |
| HOSE-BRAKE,FR,L=360 (Ref # 43059A) | 43059-1133 | 1 |
| JOINT BRAKE (Ref # 43061) | 43061-1004 | 1 |
| LEVER-GRIP,MASTER CYL (Ref # 46092) | 46092-1026 | 1 |
| BOOT,DUST (Ref # 49006) | 49006-1067 | 1 |
| COVER-SEAL,BRK PISTON (Ref # 49016) | 49016-1041 | 1 |
| BOLT,OIL,L=23 (Ref # 92001) | 92002-1888 | 1 |
| SCREW,COUNTERSUNK HED (Ref # 92001A) | 92001-1055 | 1 |
| BOLT (Ref # 92001B) | 92002-1909 | 1 |
| BOLT,6X37.3,BLACK (Ref # 92001C) | 92001-1512 | 1 |
| BOLT,W/WASHER,6X25,BL (Ref # 92001D) | 92001-1513 | 1 |
| SCREW-COUNTERSUNK (Ref # 92001E) | 92001-1532 | 1 |
| NUT,LOCK,6MM,BLACK (Ref # 92015) | 92015-1191 | 1 |
| WASHER-OIL BOLT (Ref # 92022) | 43067-001 | 1 |
| DAMPER RUBBER,CYL HSE (Ref # 92037) | 43064-006 | 1 |
| CLAMP,BRAKE HOSE,LH,B (Ref # 92037A) | 92037-1297 | 1 |
| CLAMP,BRAKE HOSE,RH,B (Ref # 92037B) | 92037-1298 | 1 |
| BOLT, 6X12, BLACK (Ref # 110) | 112C0612 | 1 |
| BOLT,FLANGED,6X65 (Ref # 130) | 130G0665 | 1 |
| WASHER-SPRING,6MM,BLA (Ref # 461) | 461K0600 | 1 |