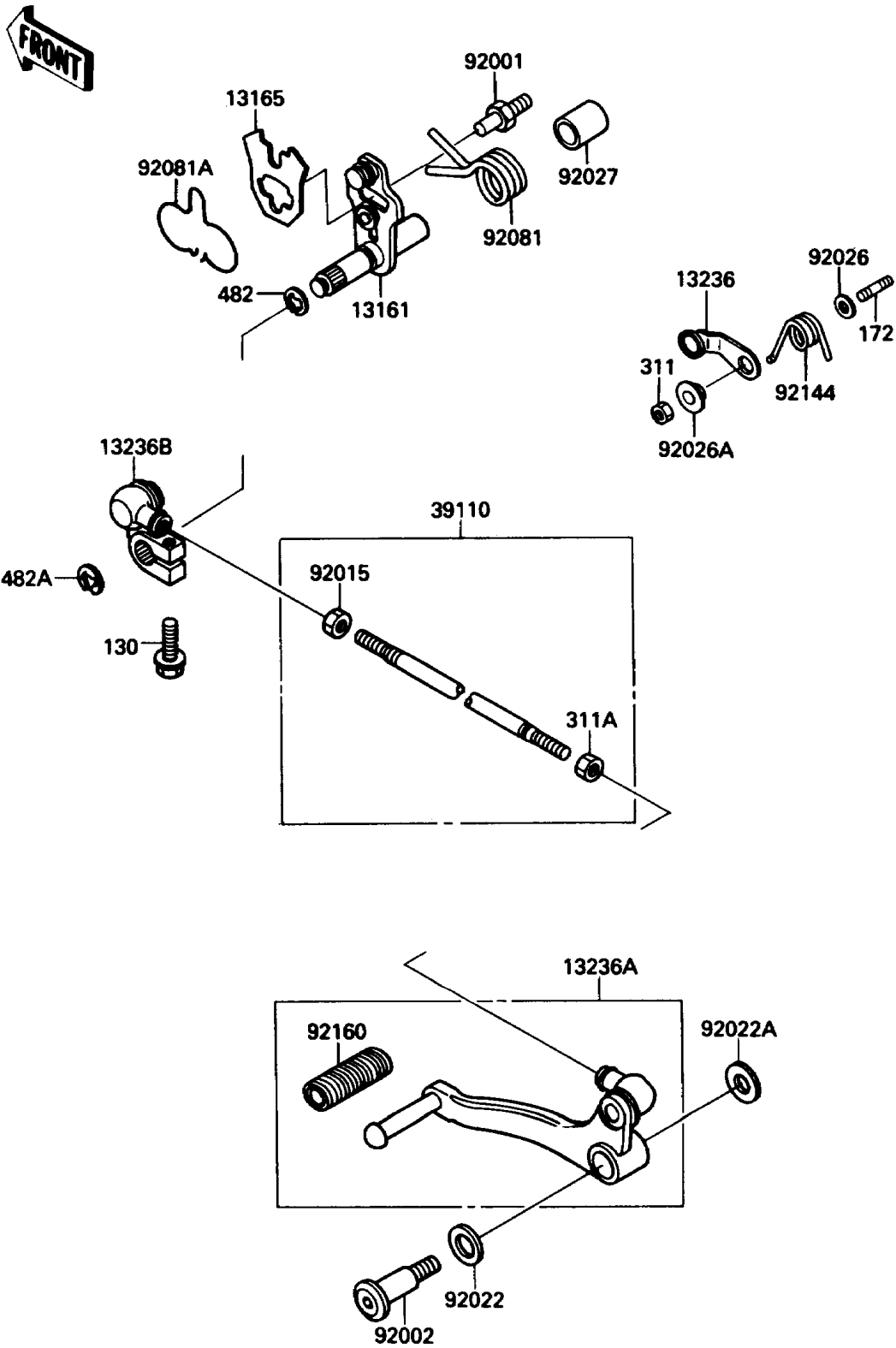


1987 EX500 PARTS DIAGRAM

Gear Change Mechanism

E1370-0179



1987 EX500 PARTS LIST

Gear Change Mechanism

ITEM NAME	PART NUMBER	QUANTITY
LEVER-COMP-CHANGE SHAFT (Ref # 13161)	13161-1117	1
PAWL,CHANGE LEVER (Ref # 13165)	13165-1034	1
LEVER-COMP,GEAR POSITION (Ref # 13236)	13236-1103	1
LEVER-COMP,CHANGE PEDAL (Ref # 13236A)	13236-1153	1
LEVER-COMP,CHANGE LINK (Ref # 13236B)	13236-1154	1
ROD-ASSY-TIE (Ref # 39110)	39110-1077	1
BOLT,RETURN SPRING (Ref # 92001)	92001-1455	1
BOLT,CHANGE PEDAL (Ref # 92002)	92002-1926	1
NUT (Ref # 92015)	92015-1178	1
WASHER,12.5X21X1.2 (Ref # 92022)	92022-1537	1
WASHER,8.5X20X1.6 (Ref # 92022A)	92022-1561	1
SPACER,6.3X12X1.0 (Ref # 92026)	92026-094	1
SPACER (Ref # 92026A)	92026-1217	1
COLLAR,13X18.3X21.5 (Ref # 92027)	92027-1440	1
SPRING,CHANGE PEDAL RETURN (Ref # 92081)	92081-1387	1
SPRING,CHANGE LEVER (Ref # 92081A)	92081-1785	1
SPRING,POSITION LEVER (Ref # 92144)	92144-1180	1
DAMPER,CHANGE PEDAL (Ref # 92160)	92160-1036	1
BOLT-FLANGED,6X20,BLACK (Ref # 130)	130S0620	1
BOLT-STUD,6X14 (Ref # 172)	172G0614	1
NUT-HEX,6MM (Ref # 311)	311G0600	1
NUT-HEX (Ref # 311A)	311J0600	1
CIRCLIP-TYPE-E,12MM (Ref # 482)	482J0200	1
CIRCLIP-TYPE-E (Ref # 482A)	482L7000	1