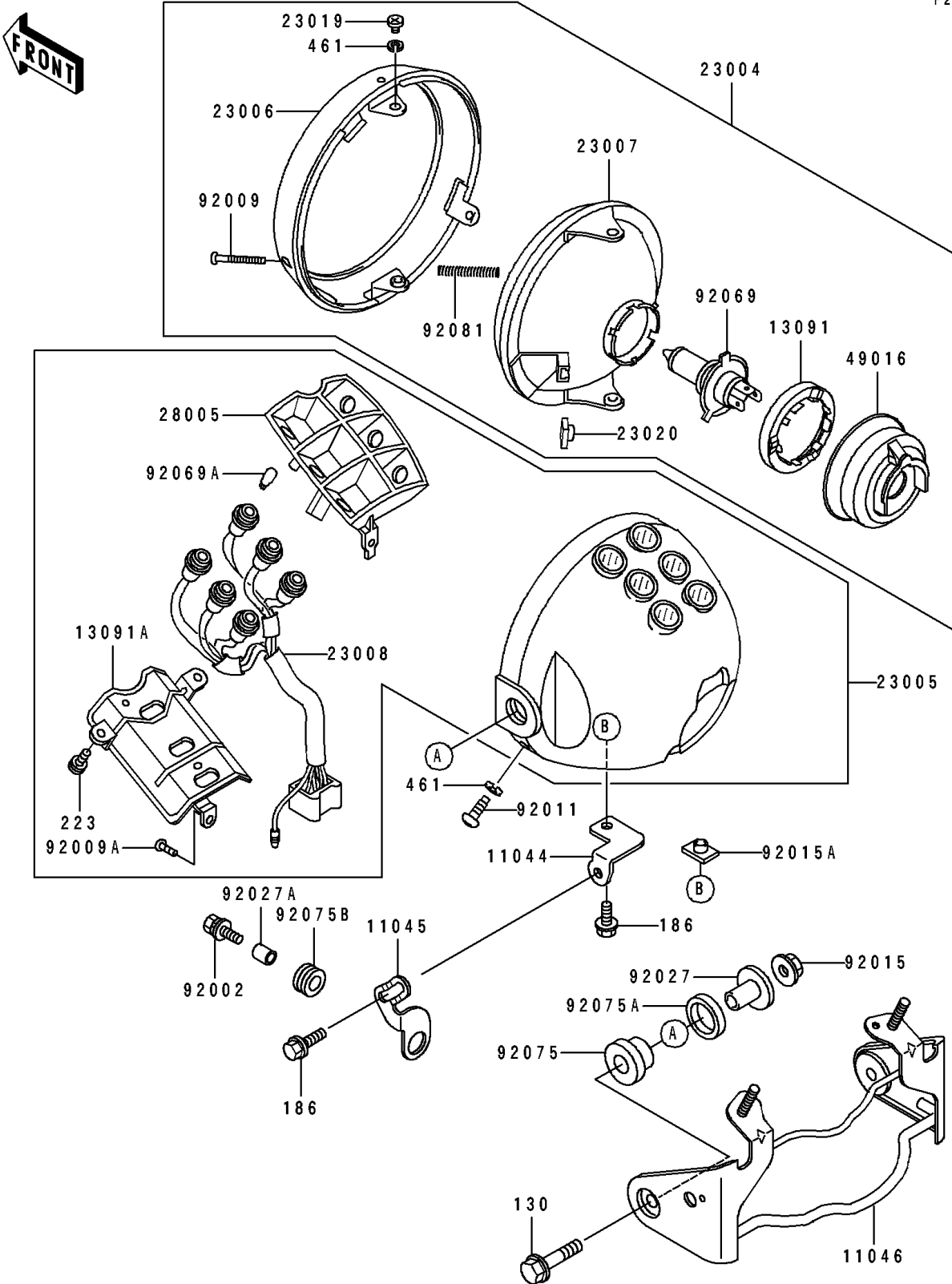


## 1991 250 HS PARTS DIAGRAM

Headlight(s)

F2710



## 1991 250 HS PARTS LIST

Headlight(s)

ITEM NAME	PART NUMBER	QUANTITY
BRACKET,HEAD LAMP,LWR (Ref # 11044)	11044-1915	1
BRACKET,HEAD LAMP,LWR (Ref # 11045)	11045-1789	1
BRACKET,HEAD LAMP STAY (Ref # 11046)	11046-1761	1
HOLDER,HEAD LAMP SOCKET (Ref # 13091)	13091-1386	1
HOLDER,HEAD LAMP (Ref # 13091A)	13091-1387	1
LAMP-HEAD (Ref # 23004)	23004-1188	1
BODY-COMP-HEAD LAMP,EBONY (Ref # 23005)	23005-1076-H8	1
RIM-LAMP (Ref # 23006)	23006-1057	1
LENS-COMP,HEAD LAMP (Ref # 23007)	23007-1136	1
SOCKET-ASSY,HEAD LAMP (Ref # 23008)	23008-1316	1
SCREW,LENS FITTING (Ref # 23019)	23019-031	1
NUT,ADJUSTING (Ref # 23020)	23020-012	1
BODY-LAMP,INDICATOR (Ref # 28005)	28005-1053	1
COVER-SEAL,HEAD LAMP SOCKET (Ref # 49016)	49016-1110	1
BOLT,6X25 (Ref # 92002)	92002-1137	1
SCREW,FOCUS ADJUST (Ref # 92009)	92009-1394	1
SCREW,TAPPING,4X12 (Ref # 92009A)	92009-1395	1
SCREW,5MM (Ref # 92011)	92011-024	1
NUT,FLANGED,8MM (Ref # 92015)	92015-1014	1
NUT,6MM,HEAD LAMP (Ref # 92015A)	92015-1231	1
COLLAR,L=20 (Ref # 92027)	92027-1131	1
COLLAR,6.8X10X12 (Ref # 92027A)	92027-162	1
BULB,12V 60/55W,H4 (Ref # 92069)	92069-1002	1
BULB,12V3W T-7 (Ref # 92069A)	92069-1020	1
DAMPER,HEAD LAMP FITTING (Ref # 92075)	92075-1109	1
DAMPER,HEAD LAMP FITTING (Ref # 92075A)	92075-1110	1
DAMPER (Ref # 92075B)	92075-209	1
SPRING,FOCUS ADJUST (Ref # 92081)	92081-1892	1
BOLT-FLANGED,8X40 (Ref # 130)	130C0840	1

## 1991 250 HS PARTS LIST

Headlight(s)

ITEM NAME	PART NUMBER	QUANTITY
BOLT-UPSET-WP (Ref # 186)	186C0614	1
SCREW-PAN-WS-CROS (Ref # 223)	223D0410	1
WASHER-SPRING,5MM (Ref # 461)	461F0500	1