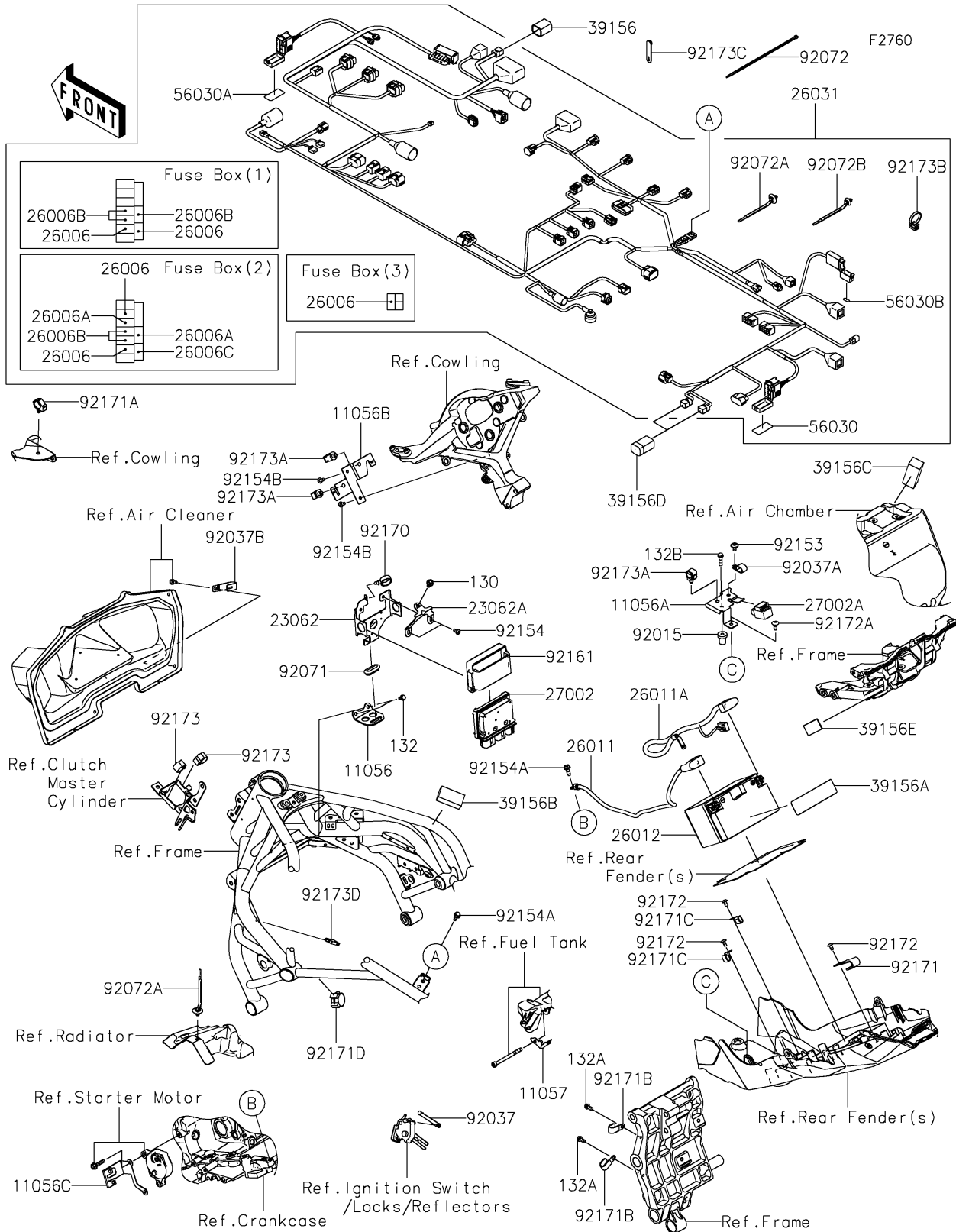


2023 NINJA H2[®]R

PARTS DIAGRAM

Chassis Electrical Equipment



2023 NINJA H2® R

PARTS LIST

Chassis Electrical Equipment

| ITEM NAME | PART NUMBER | QUANTITY |
|--|-------------|----------|
| BRACKET,RELAY BRKT.,LWR (Ref # 11056) | 11056-7100 | 1 |
| BRACKET,RR WHEEL SPEED SENSOR (Ref # 11056A) | 11056-7175 | 1 |
| BRACKET,HARNESS CONNECTOR (Ref # 11056B) | 11056-7378 | 1 |
| BRACKET,STARTER (Ref # 11056C) | 11056-7543 | 1 |
| BRACKET,FUEL PUMP CONNECTOR (Ref # 11057) | 11057-0040 | 1 |
| BRACKET-COMP,RELAY BOX (Ref # 23062) | 23062-0844 | 1 |
| BRACKET-COMP,RELAY BRKT.,UPP (Ref # 23062A) | 23062-0845 | 1 |
| FUSE,MINI BLADE,15A,BLUE (Ref # 26006) | 26006-0001 | 5 |
| FUSE,MINI BLADE,25A,NATURAL (Ref # 26006A) | 26006-0020 | 2 |
| FUSE,MINI BLADE,10A,RED (Ref # 26006B) | 26006-1078 | 5 |
| FUSE,MINI BLADE,30A,GREEN (Ref # 26006C) | 26006-1080 | 1 |
| WIRE-LEAD,BATTERY(-) (Ref # 26011) | 26011-0908 | 1 |
| WIRE-LEAD,BATTERY(+) (Ref # 26011A) | 26011-0909 | 1 |
| BATTERY,YTZ10S,12V 8.6AH (Ref # 26012) | 26012-0564 | 1 |
| HARNESS,MAIN (Ref # 26031) | 26031-2190 | 1 |
| RELAY-ASSY (Ref # 27002) | 27002-0050 | 1 |
| RELAY-ASSY (Ref # 27002A) | 27002-1062 | 1 |
| PAD,DIAG. CONNECTOR (Ref # 39156) | 39156-1886 | 1 |
| PAD,30X115X0.36 (Ref # 39156A) | 39156-1895 | 1 |
| PAD,25X50X20 (Ref # 39156B) | 39156-1940 | 1 |
| PAD,25X65X20 (Ref # 39156C) | 39156-1945 | 1 |
| PAD,DIAG. CONNECTOR (Ref # 39156D) | 39156-2112 | 2 |
| PAD,30X15X1 (Ref # 39156E) | 39156-2495 | 1 |
| LABEL,FUSE BOX 2 (Ref # 56030) | 56030-0902 | 1 |
| LABEL,FUSE BOX 1 (Ref # 56030A) | 56030-0903 | 1 |
| LABEL,FUSE BOX 3 (Ref # 56030B) | 56030-0906 | 1 |
| NUT,RUBBER,6MM (Ref # 92015) | 92015-1692 | 1 |
| CLAMP,SPEED,L=58 (Ref # 92037) | 92037-1163 | 1 |
| CLAMP (Ref # 92037A) | 92037-1608 | 1 |

2023 NINJA H2® R

PARTS LIST

Chassis Electrical Equipment

| ITEM NAME | PART NUMBER | QUANTITY |
|--|-------------|----------|
| CLAMP,CABLE,STEEL SHEET (Ref # 92037B) | 92037-2014 | 1 |
| GROMMET (Ref # 92071) | 92071-1187 | 1 |
| BAND,202X3.6 (Ref # 92072) | 92072-0782 | 4 |
| BAND (Ref # 92072A) | 92072-1392 | 2 |
| BAND,OS170-FT7(BLACK) (Ref # 92072B) | 92072-1414 | 1 |
| BOLT,SOCKET,6X10 (Ref # 92153) | 92153-0410 | 1 |
| BOLT,SOCKET,5X10 (Ref # 92154) | 92154-0211 | 2 |
| BOLT,FLANGED,6X16 (Ref # 92154A) | 92154-0551 | 2 |
| BOLT,SOCKET,5X12 (Ref # 92154B) | 92154-0917 | 2 |
| DAMPER,RELAY BOX (Ref # 92161) | 92161-0203 | 1 |
| CLAMP (Ref # 92170) | 92170-1067 | 1 |
| CLAMP (Ref # 92171) | 92171-0305 | 1 |
| CLAMP,BRAKE HOSE (Ref # 92171A) | 92171-0316 | 1 |
| CLAMP (Ref # 92171B) | 92171-0739 | 2 |
| CLAMP (Ref # 92171C) | 92171-0766 | 2 |
| CLAMP,25MM DIA. (Ref # 92171D) | 92171-1559 | 1 |
| SCREW,TAPPING,5X10 (Ref # 92172) | 92172-0262 | 3 |
| SCREW,6X16 (Ref # 92172A) | 92172-0284 | 1 |
| CLAMP,CLIP (Ref # 92173) | 92173-0127 | 2 |
| CLAMP,12MM DIA. (Ref # 92173A) | 92173-0736 | 3 |
| CLAMP (Ref # 92173B) | 92173-0791 | 3 |
| CLAMP,RUBBER PLATE (Ref # 92173C) | 92173-1229 | 2 |
| CLAMP (Ref # 92173D) | 92173-1513 | 1 |
| BOLT-FLANGED,6X10 (Ref # 130) | 130BA0610 | 1 |
| BOLT-FLANGED-SMALL,6X10 (Ref # 132) | 132BA0610 | 2 |
| BOLT-FLANGED-SMALL,6X12 (Ref # 132A) | 132BA0612 | 2 |
| BOLT-FLANGED-SMALL,6X22 (Ref # 132B) | 132BA0622 | 1 |