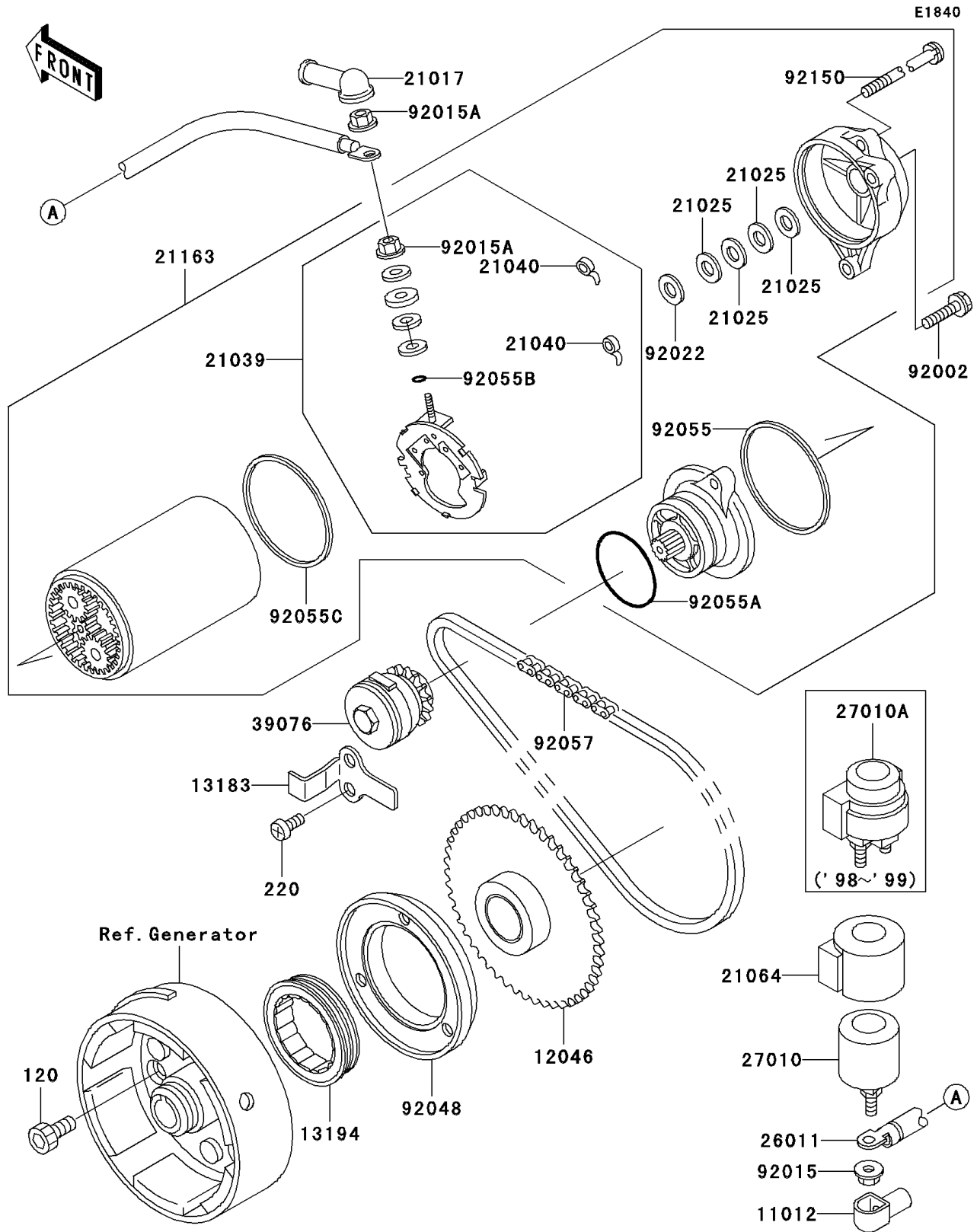


1999 Bayou 300 4X4 PARTS DIAGRAM

Starter Motor



1999 Bayou 300 4X4 PARTS LIST

Starter Motor

| ITEM NAME | PART NUMBER | QUANTITY |
|---|-------------|----------|
| BOLT-SOCKET (Ref # 120) | 120P0816 | 3 |
| SCREW-PAN-CROS,6X12 (Ref # 220) | 220B0612 | 1 |
| CAP,TERMINAL (Ref # 11012) | 11012-1354 | 1 |
| SPROCKET,STARTER (Ref # 12046) | 12046-1077 | 1 |
| PLATE,STARTER CHAIN (Ref # 13183) | 13183-1002 | 1 |
| CLUTCH-ONEWAY (Ref # 13194) | 13194-1091 | 1 |
| GROMMET,STARTER TERMINAL (Ref # 21017) | 21017-017 | 1 |
| WASHER,9.1X18X0.2 (Ref # 21025) | 21025-011 | 4 |
| BRUSH,CARBON (Ref # 21039) | 21039-1063 | 1 |
| SPRING-BRUSH (Ref # 21040) | 21040-1057 | 2 |
| STARTER-ELECTRIC (Ref # 21163) | 21163-1141 | 1 |
| WIRE-LEAD,STATER MOTOR (Ref # 26011) | 26011-1327 | 1 |
| SWITCH,STARTER (Ref # 27010A) | 27010-1314 | 1 |
| LIMITER,STARTER IDLE GEAR (Ref # 39076) | 39076-1054 | 1 |
| BOLT (Ref # 92002) | 92002-1664 | 2 |
| NUT,FLANGED,6MM (Ref # 92015) | 92015-1367 | 2 |
| NUT,STARTER MOTOR (Ref # 92015A) | 92015-1476 | 2 |
| WASHER,9.1X18X0.8 (Ref # 92022) | 92022-1132 | 1 |
| RACE,ONEWAY CLUTCH (Ref # 92048) | 92048-1095 | 1 |
| RING-O,64MM (Ref # 92055) | 92055-1086 | 1 |
| RING-O,42.8MM (Ref # 92055A) | 92055-1313 | 1 |
| RING-O,4.5X2.0 (Ref # 92055B) | 92055-1370 | 1 |
| RING-O,STARTER MOTOR (Ref # 92055C) | 92055-1381 | 1 |
| CHAIN,STARTER,KEC29H,64L (Ref # 92057) | 92057-1196 | 1 |
| BOLT,STARTER MOTOR (Ref # 92150) | 92150-1138 | 2 |