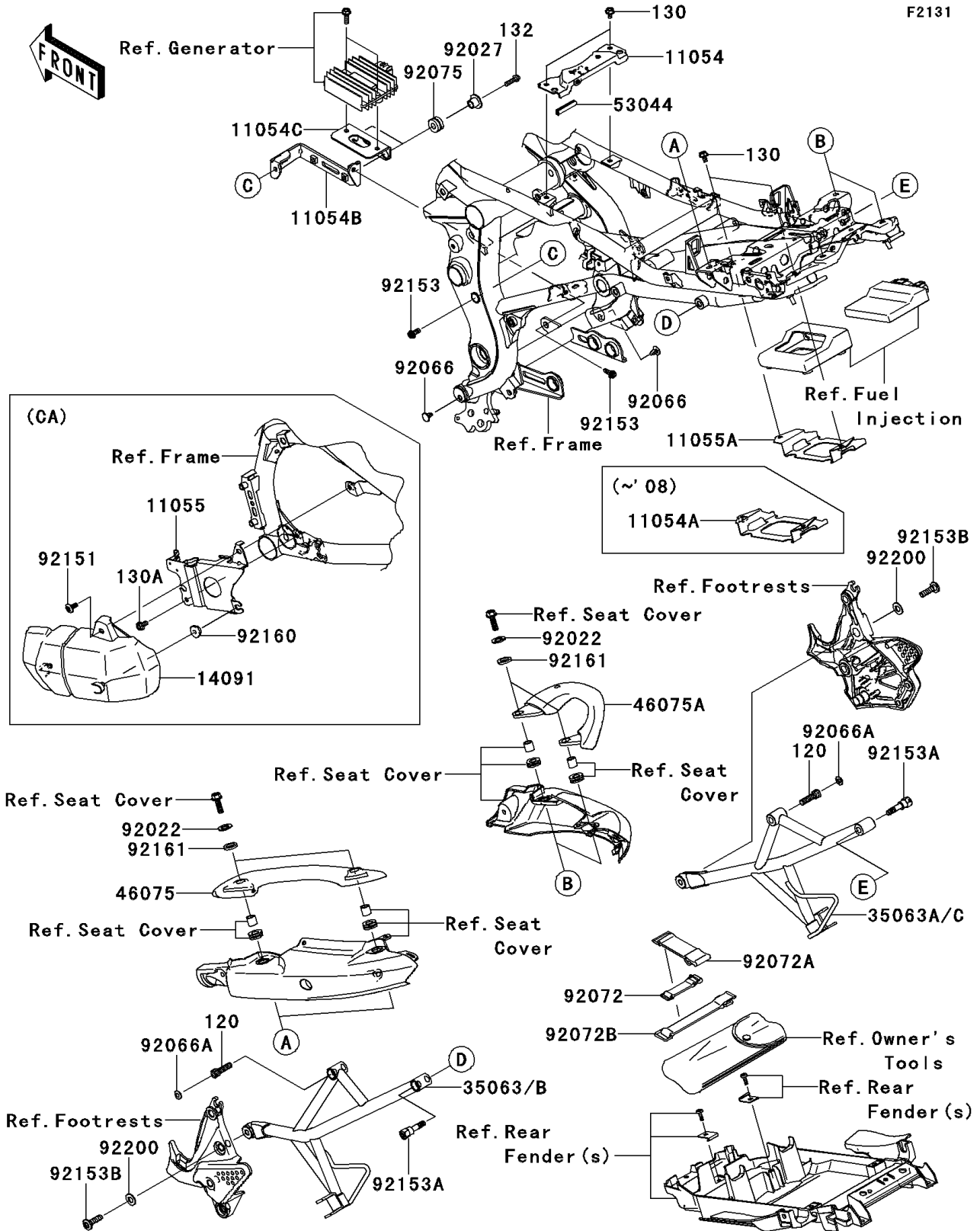


2007 VERSYS® (European)

PARTS DIAGRAM

Frame Fittings



2007 VERSYS® (European)

PARTS LIST

Frame Fittings

| ITEM NAME | PART NUMBER | QUANTITY |
|--|----------------|----------|
| BOLT-SOCKET,8X30 (Ref # 120) | 120CB0830 | 2 |
| BOLT-FLANGED,6X10 (Ref # 130) | 130BB0610 | 4 |
| BOLT-FLANGED-SMALL,6X22 (Ref # 132) | 132BB0622 | 2 |
| BRACKET,FUEL TANK (Ref # 11054) | 11054-0248 | 1 |
| BRACKET,ECU (Ref # 11054A) | 11054-0370 | 1 |
| BRACKET,REGULATOR (Ref # 11054B) | 11054-1283 | 1 |
| BRACKET,REGULATOR (Ref # 11054C) | 11054-1284 | 1 |
| STAY,STEP,RR,LH,F.S.BLACK (Ref # 35063) | 35063-0408-11E | 1 |
| STAY,STEP,RR,RH,F.S.BLACK (Ref # 35063A) | 35063-0409-11E | 1 |
| GRIP,LH (Ref # 46075) | 46075-0057 | 1 |
| GRIP,RH (Ref # 46075A) | 46075-0058 | 1 |
| TRIM,L=40 (Ref # 53044) | 53044-1174 | 1 |
| WASHER,PLAIN (Ref # 92022) | 92022-3026 | 4 |
| COLLAR,L=13.1,BLACK (Ref # 92027) | 92027-1450 | 2 |
| PLUG (Ref # 92066) | 92066-1103 | 2 |
| PLUG (Ref # 92066A) | 92066-1216 | 2 |
| BAND (Ref # 92072) | 92072-1085 | 1 |
| BAND,TOOL (Ref # 92072A) | 92072-1176 | 1 |
| BAND,L=150 (Ref # 92072B) | 92072-1203 | 1 |
| DAMPER (Ref # 92075) | 92075-209 | 2 |
| BOLT,SOCKET,6X16 (Ref # 92153) | 92153-1517 | 2 |
| BOLT (Ref # 92153A) | 92153-1532 | 2 |
| BOLT,SOCKET,8X30 (Ref # 92153B) | 92153-1630 | 2 |
| DAMPER (Ref # 92161) | 92161-0460 | 4 |
| WASHER,10.2X20X1.6 (Ref # 92200) | 92200-0328 | 2 |