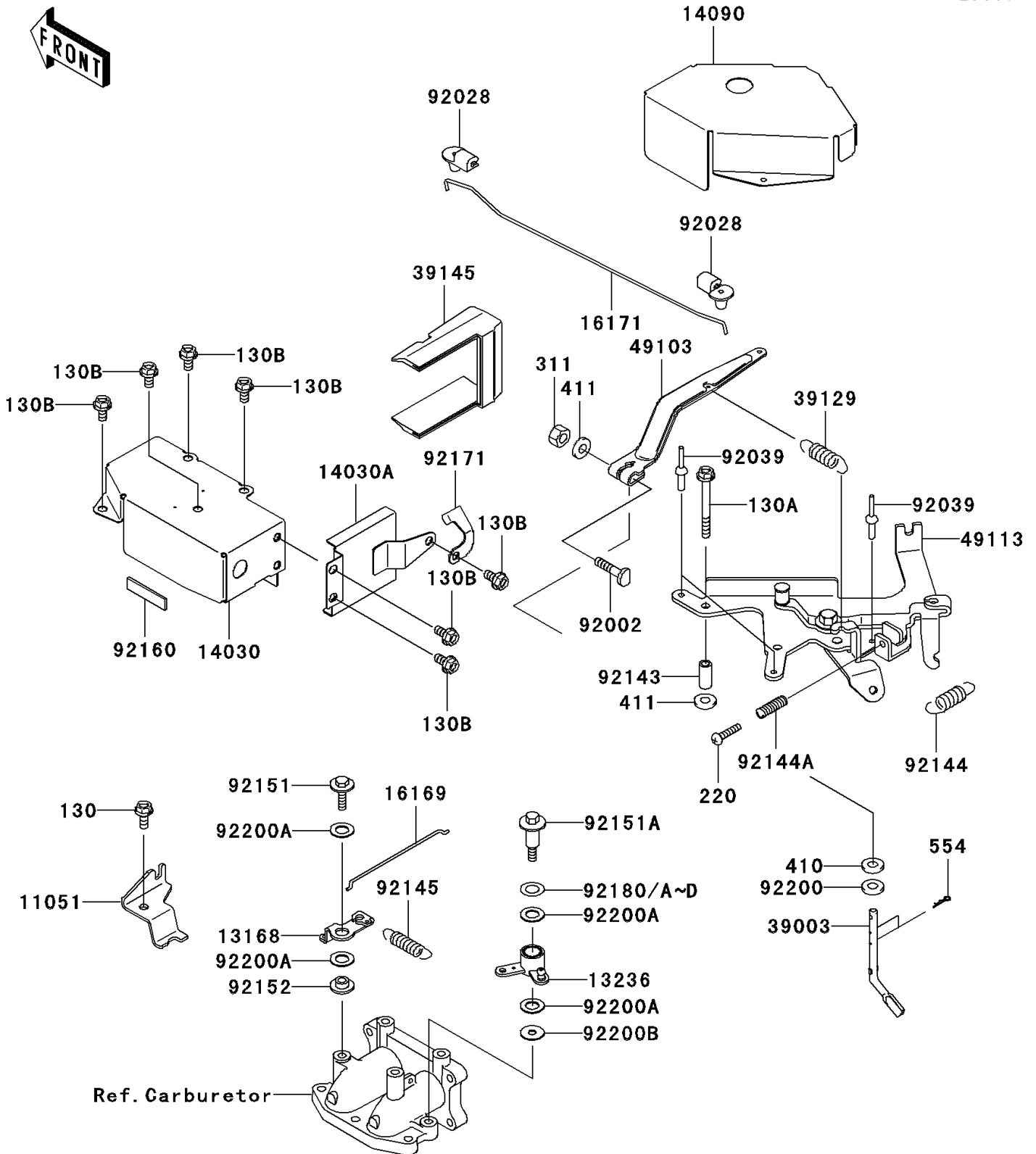


# Mule 3010 Trans4x4

## PARTS DIAGRAM

### Control

E7110



# Mule 3010 Trans4x4

## PARTS LIST

### Control

ITEM NAME	PART NUMBER	QUANTITY
BOLT-FLANGED,6X14 (Ref # 130)	130BA0614	1
BOLT-FLANGED,6X55 (Ref # 130A)	130BA0655	2
BOLT-FLANGED,6X12 (Ref # 130B)	130BB0612	7
SCREW-PAN-CROS,5X22 (Ref # 220)	220AA0522	1
NUT-HEX,6MM (Ref # 311)	311B0600	1
WASHER-PLAIN-SMALL,6MM (Ref # 410)	410B0600	1
WASHER-PLAIN,6MM (Ref # 411)	411B0600	3
BRACKET (Ref # 11051)	11051-2100	1
LEVER (Ref # 13168)	13168-2460	1
LEVER-COMP (Ref # 13236)	13236-2154	1
COVER-CARBURETOR (Ref # 14030)	14030-1059	1
COVER-CARBURETOR (Ref # 14030A)	14030-1060	1
COVER,CONTROL PANEL (Ref # 14090)	14090-1335	1
LINK-CHOKE (Ref # 16169)	16169-2140	1
LINK (Ref # 16171)	16171-1061	1
ARM-PIVOT,GOVERNOR (Ref # 39003)	39003-1053	1
SPRING-GOVERNOR (Ref # 39129)	39129-1011	1
TRIM-SEAL (Ref # 39145)	39145-1128	1
ARM-GOVERNOR (Ref # 49103)	49103-1055	1
PANEL-COMP-CONTROL (Ref # 49113)	49113-1056	1
BOLT,6X28 (Ref # 92002)	92002-2269	1
BUSHING,GOVERNOR (Ref # 92028)	92028-2156	2
RIVET,BLIND,4.0X9.2 (Ref # 92039)	92039-1163	3
COLLAR,6.8X10X42 (Ref # 92143)	92143-1072	2
SPRING,CONTROL (Ref # 92144)	92144-1410	1
SPRING (Ref # 92144A)	92144-2266	1
SPRING (Ref # 92145)	92145-2088	1
BOLT (Ref # 92151)	92151-2139	1
BOLT (Ref # 92151A)	92151-2140	1

# Mule 3010 Trans4x4

## PARTS LIST

### Control

ITEM NAME	PART NUMBER	QUANTITY
COLLAR (Ref # 92152)	92152-2069	1
DAMPER (Ref # 92160)	92160-1099	1
CLAMP (Ref # 92171)	92171-1350	1
SHIM,T=0.5 (Ref # 92180)	92180-2055	AR
SHIM,T=0.4 (Ref # 92180A)	92180-2056	AR
SHIM,T=0.3 (Ref # 92180B)	92180-2057	AR
SHIM,T=0.6 (Ref # 92180C)	92180-2060	AR
SHIM,T=0.7 (Ref # 92180D)	92180-2061	AR
WASHER,6.5X11.5X2.0 (Ref # 92200)	92200-2029	1
WASHER,10.1X18X1.0 (Ref # 92200A)	92200-2124	4
WASHER,6.1X18X1.0 (Ref # 92200B)	92200-2125	1
PIN-SNAP (Ref # 554)	554A0600	2