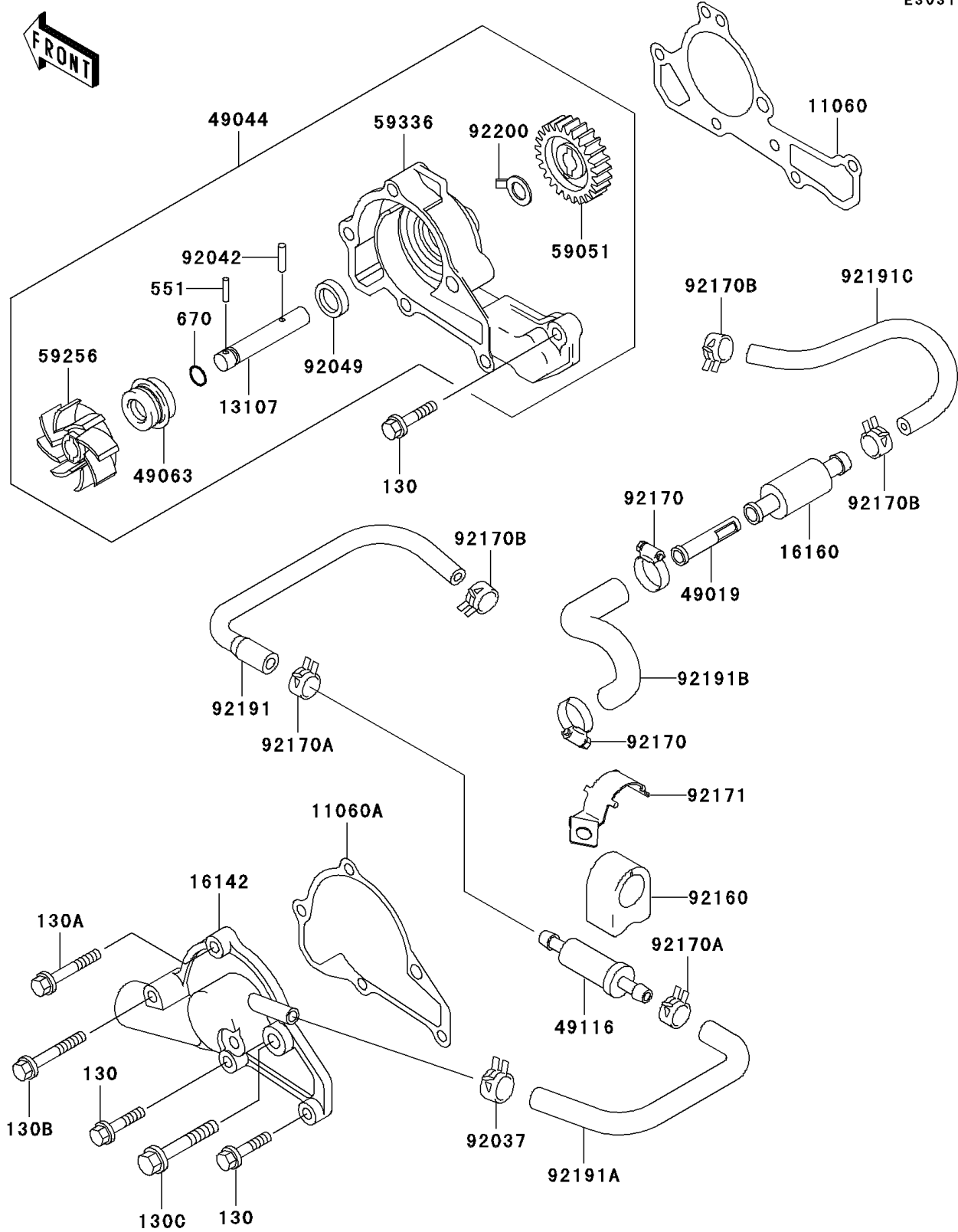


Mule 3010 Trans4x4

PARTS DIAGRAM

Water Pump

E3031



Mule 3010 Trans4x4

PARTS LIST

Water Pump

| ITEM NAME | PART NUMBER | QUANTITY |
|----------------------------------|-------------|----------|
| BOLT-FLANGED,6X45 (Ref # 130) | 130CA0645 | 3 |
| BOLT-FLANGED,6X65 (Ref # 130A) | 130CA0665 | 1 |
| BOLT-FLANGED,6X75 (Ref # 130B) | 130CA0675 | 1 |
| BOLT-FLANGED,8X70 (Ref # 130C) | 130CA0870 | 1 |
| PIN-DOWEL,3X14 (Ref # 551) | 551A0314 | 1 |
| O RING,7MM (Ref # 670) | 670B1507 | 1 |
| GASKET,PUMP CASE (Ref # 11060) | 11060-2450 | 1 |
| GASKET,PUMP COVER (Ref # 11060A) | 11060-2451 | 1 |
| SHAFT (Ref # 13107) | 13107-2097 | 1 |
| COVER-PUMP (Ref # 16142) | 16142-2069 | 1 |
| BODY (Ref # 16160) | 16160-1359 | 1 |
| FILTER-WATER (Ref # 49019) | 49019-1068 | 1 |
| PUMP-WATER (Ref # 49044) | 49044-2066 | 1 |
| SEAL-MECHANICAL (Ref # 49063) | 49063-1056 | 1 |
| VALVE-ASSY (Ref # 49116) | 49116-1081 | 1 |
| GEAR-SPUR (Ref # 59051) | 59051-2113 | 1 |
| IMPELLER (Ref # 59256) | 59256-2057 | 1 |
| CASE-PUMP (Ref # 59336) | 59336-2052 | 1 |
| CLAMP,HOSE CLIP (Ref # 92037) | 92037-2065 | 1 |
| PIN,DOWEL,4X15.8 (Ref # 92042) | 92042-014 | 1 |
| SEAL-OIL (Ref # 92049) | 92049-2111 | 1 |
| DAMPER,VALVE (Ref # 92160) | 92160-1451 | 1 |
| CLAMP (Ref # 92170) | 92170-1278 | 2 |
| CLAMP (Ref # 92170A) | 92170-1492 | 2 |
| CLAMP (Ref # 92170B) | 92170-1493 | 3 |
| CLAMP (Ref # 92171) | 92171-2064 | 1 |
| TUBE (Ref # 92191) | 92191-2110 | 1 |
| TUBE (Ref # 92191A) | 92191-2111 | 1 |
| TUBE (Ref # 92191B) | 92191-2125 | 1 |

Mule 3010 Trans4x4

PARTS LIST

Water Pump

| ITEM NAME | PART NUMBER | QUANTITY |
|----------------------|-------------|----------|
| TUBE (Ref # 92191C) | 92191-2130 | 1 |
| WASHER (Ref # 92200) | 92200-2044 | 1 |