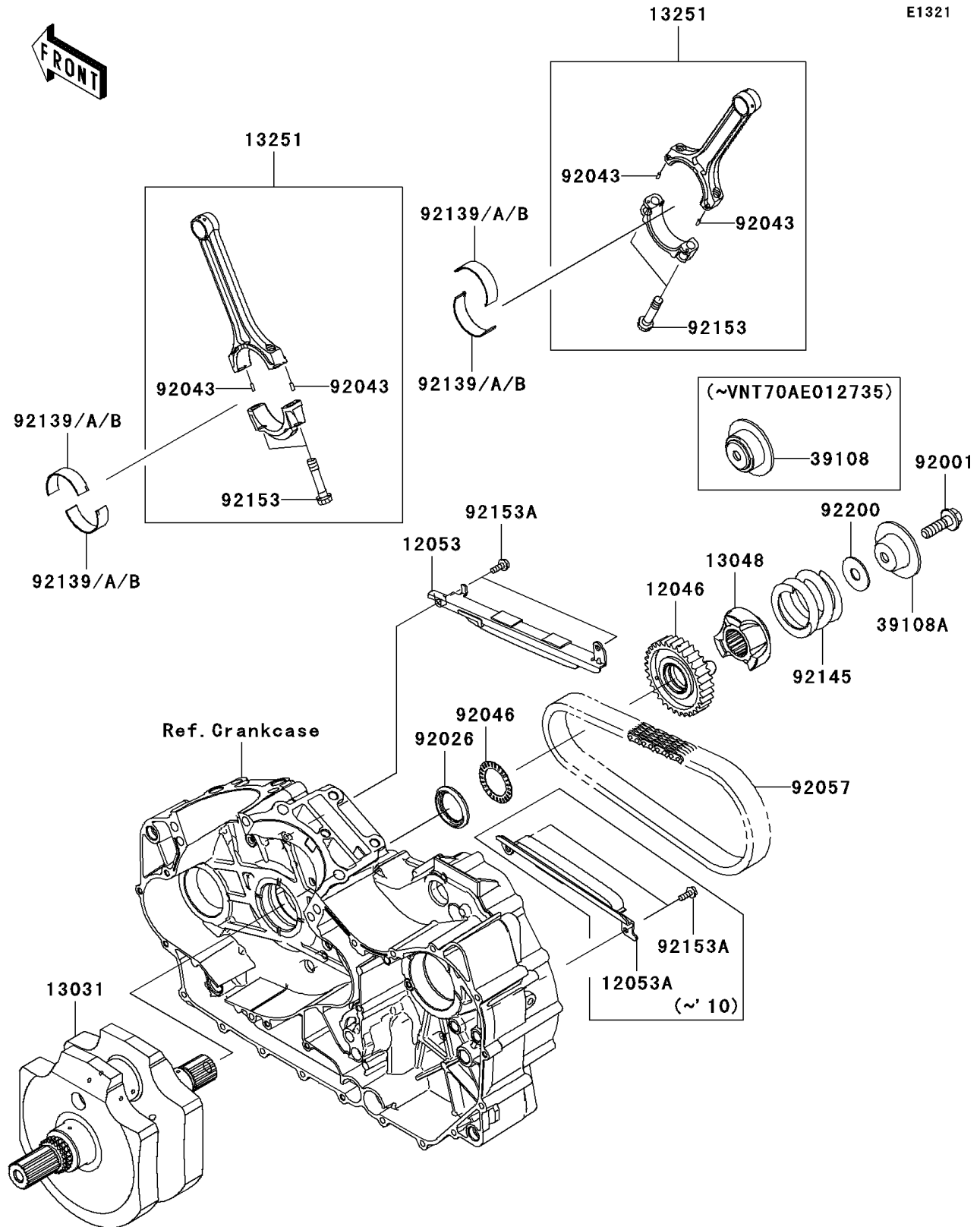


# 2009 Vulcan® 1700 Nomad™

## PARTS DIAGRAM

### Crankshaft



# 2009 Vulcan® 1700 Nomad™

## PARTS LIST

### Crankshaft

| ITEM NAME                                   | PART NUMBER | QUANTITY |
|---|-------------|----------|
| SPROCKET,PRIMARY,33T (Ref # 12046)          | 12046-0065  | 1        |
| GUIDE-CHAIN,PRIMARY,UPP (Ref # 12053)       | 12053-0122  | 1        |
| GUIDE-CHAIN,PRIMARY,LWR (Ref # 12053A)      | 12053-0123  | 1        |
| CRANKSHAFT-COMP (Ref # 13031)               | 13031-0104  | 1        |
| CAM-DAMPER (Ref # 13048)                    | 13048-0017  | 1        |
| ROD-ASSY-CONNECTING (Ref # 13251)           | 13251-0026  | 2        |
| RETAINER-SPRING (Ref # 39108)               | 39108-0013  | 1        |
| BOLT,FLANGED,12X40 (Ref # 92001)            | 92001-1146  | 1        |
| SPACER (Ref # 92026)                        | 92026-0123  | 1        |
| PIN,3X8.5 (Ref # 92043)                     | 92043-0033  | 4        |
| BEARING-NEEDLE (Ref # 92046)                | 92046-0033  | 1        |
| CHAIN,PRIMARY,89HV303CF-92 (Ref # 92057)    | 92057-0155  | 1        |
| BUSHING,CONNECTING ROD,BLUE (Ref # 92139)   | 92139-0225  | 4        |
| BUSHING,CONNECTING ROD,BLACK (Ref # 92139A) | 92139-0226  | AR       |
| BUSHING,CONNECTING ROD,BROWN (Ref # 92139B) | 92139-0227  | AR       |
| SPRING,58X11X46.5 (Ref # 92145)             | 92145-0592  | 1        |
| BOLT,CONNECTING ROD (Ref # 92153)           | 92153-0314  | 4        |
| BOLT,FLANGED,6X16 (Ref # 92153A)            | 92153-0713  | 4        |