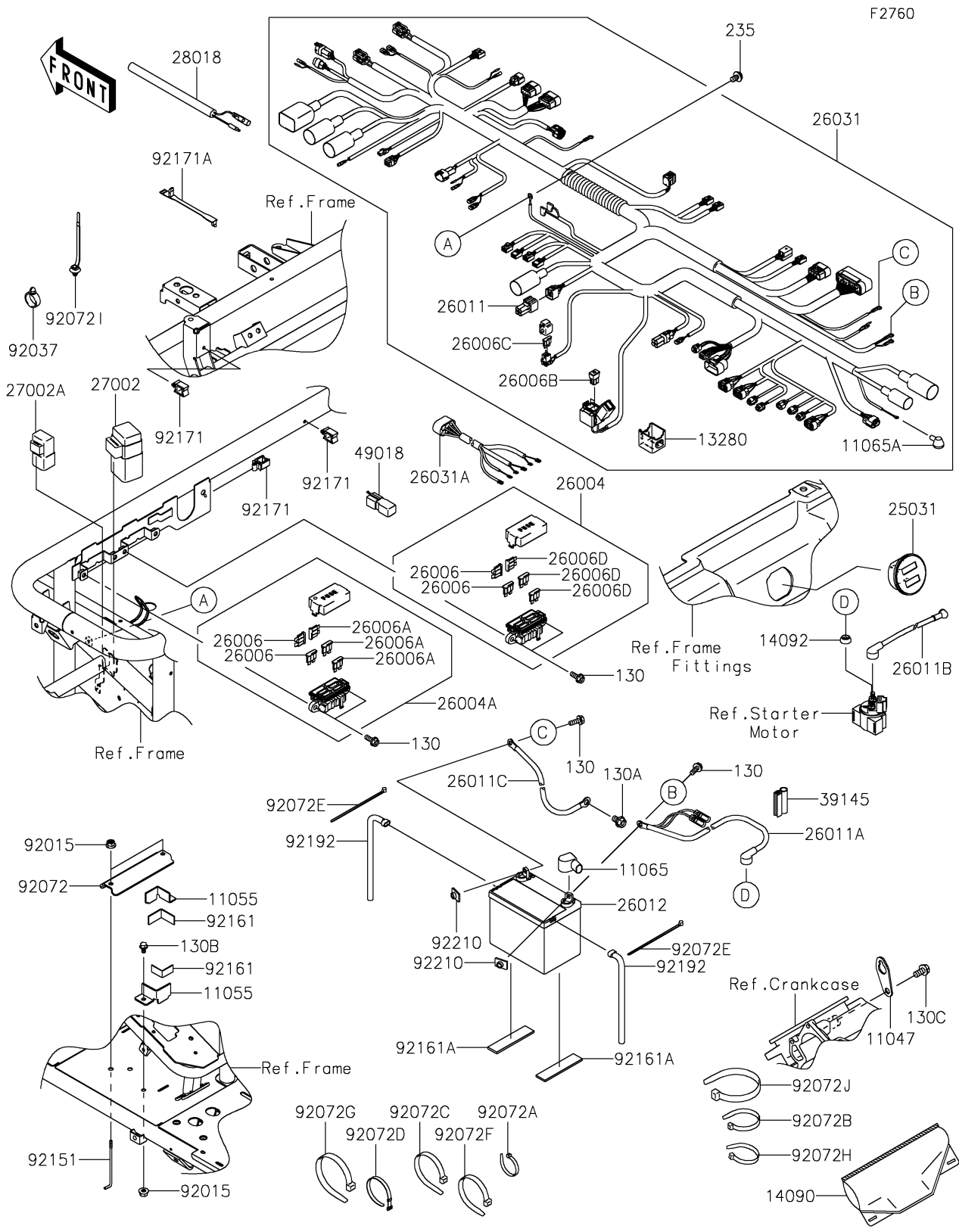


2026 MULE™ 4010 TRANS4x4®

PARTS DIAGRAM

Chassis Electrical Equipment



2026 MULE™ 4010 TRANS4x4®

PARTS LIST

Chassis Electrical Equipment

| ITEM NAME | PART NUMBER | QUANTITY |
|--|---------------|----------|
| BRACKET,F.BLACK (Ref # 11047) | 11047-2056-9H | 1 |
| BRACKET (Ref # 11055) | 11055-0433 | 2 |
| CAP,BATTERY TERMINAL (Ref # 11065) | 11065-0285 | 1 |
| CAP,NEUTRAL SW. (Ref # 11065A) | 11065-0726 | 1 |
| HOLDER (Ref # 13280) | 13280-7508 | 1 |
| COVER,COUPLER (Ref # 14090) | 14090-1611 | 1 |
| COVER,MAGNETIC SW. (Ref # 14092) | 14092-0851 | 1 |
| METER-ASSY (Ref # 25031) | 25031-1397 | 1 |
| FUSE-ASSY (Ref # 26004) | 26004-0018 | 1 |
| FUSE-ASSY (Ref # 26004A) | 26004-0019 | 1 |
| FUSE,BLADE,30A,GREEN (Ref # 26006) | 26006-0004 | 4 |
| FUSE,BLADE,10A,RED (Ref # 26006A) | 26006-0005 | 3 |
| FUSE,SLOW BLOW,BT,40A,GREEN (Ref # 26006B) | 26006-0014 | 2 |
| FUSE,7.5A (Ref # 26006C) | 26006-0015 | 2 |
| FUSE,BLADE,20A,YELLOW (Ref # 26006D) | 26006-1051 | 3 |
| WIRE-LEAD (Ref # 26011) | 26011-0037 | 1 |
| WIRE-LEAD,BATTERY(+) (Ref # 26011A) | 26011-0813 | 1 |
| WIRE-LEAD,STARTER (Ref # 26011B) | 26011-0815 | 1 |
| WIRE-LEAD,BATTERY(-) (Ref # 26011C) | 26011-7516 | 1 |
| BATTERY,12V 14AH (Ref # 26012) | 26012-0107 | 1 |
| HARNESS,MAIN (Ref # 26031) | 26031-2459 | 1 |
| HARNESS (Ref # 26031A) | 26031-3842 | 1 |
| RELAY-ASSY (Ref # 27002) | 27002-1068 | 1 |
| RELAY-ASSY (Ref # 27002A) | 27002-1088 | 1 |
| RESISTOR (Ref # 28018) | 28018-0553 | 1 |
| TRIM-SEAL (Ref # 39145) | 39145-0046 | 1 |
| DIODE (Ref # 49018) | 49018-0005 | 1 |
| NUT,FLANGED,8MM (Ref # 92015) | 92015-1406 | 4 |
| CLAMP,HOSE (Ref # 92037) | 92037-1827 | 2 |

2026 MULE™ 4010 TRANS4x4®

PARTS LIST

Chassis Electrical Equipment

| ITEM NAME | PART NUMBER | QUANTITY |
|---|-------------|----------|
| BAND (Ref # 92072) | 92072-0112 | 1 |
| BAND,L=123 (Ref # 92072A) | 92072-030 | 3 |
| BAND,L=149 (Ref # 92072B) | 92072-031 | 2 |
| BAND,L=218 (Ref # 92072C) | 92072-032 | 2 |
| BAND,L=186 (Ref # 92072D) | 92072-056 | 1 |
| BAND,92X2.4 (Ref # 92072E) | 92072-0791 | 2 |
| BAND,L=202 (Ref # 92072F) | 92072-1195 | 1 |
| BAND,L=250 (Ref # 92072G) | 92072-1237 | 2 |
| BAND,L=188 (Ref # 92072H) | 92072-1239 | 15 |
| BAND,OS170-FT7(BLACK) (Ref # 92072I) | 92072-1414 | 2 |
| BAND,L=368.3 (Ref # 92072J) | 92072-3872 | 4 |
| BOLT,BATTERY (Ref # 92151) | 92151-1897 | 2 |
| DAMPER (Ref # 92161) | 92161-0580 | 2 |
| DAMPER,31.1X130X5 (Ref # 92161A) | 92161-0936 | 2 |
| CLAMP (Ref # 92171) | 92171-0290 | 3 |
| CLAMP (Ref # 92171A) | 92171-1365 | 1 |
| TUBE,BREATHER,7X10X210,WHT MK (Ref # 92192) | 92192-1680 | 2 |
| NUT,PLATE,6MM (Ref # 92210) | 92210-1352 | 2 |
| BOLT-FLANGED,6X16 (Ref # 130) | 130BA0616 | 6 |
| BOLT-FLANGED,8X12 (Ref # 130A) | 130BA0812 | 1 |
| BOLT-FLANGED,8X14 (Ref # 130B) | 130BA0814 | 2 |
| BOLT-FLANGED,8X16 (Ref # 130C) | 130BA0816 | 1 |
| SCREW-PAN-WP-CROS,6X10 (Ref # 235) | 235AA0610 | 1 |