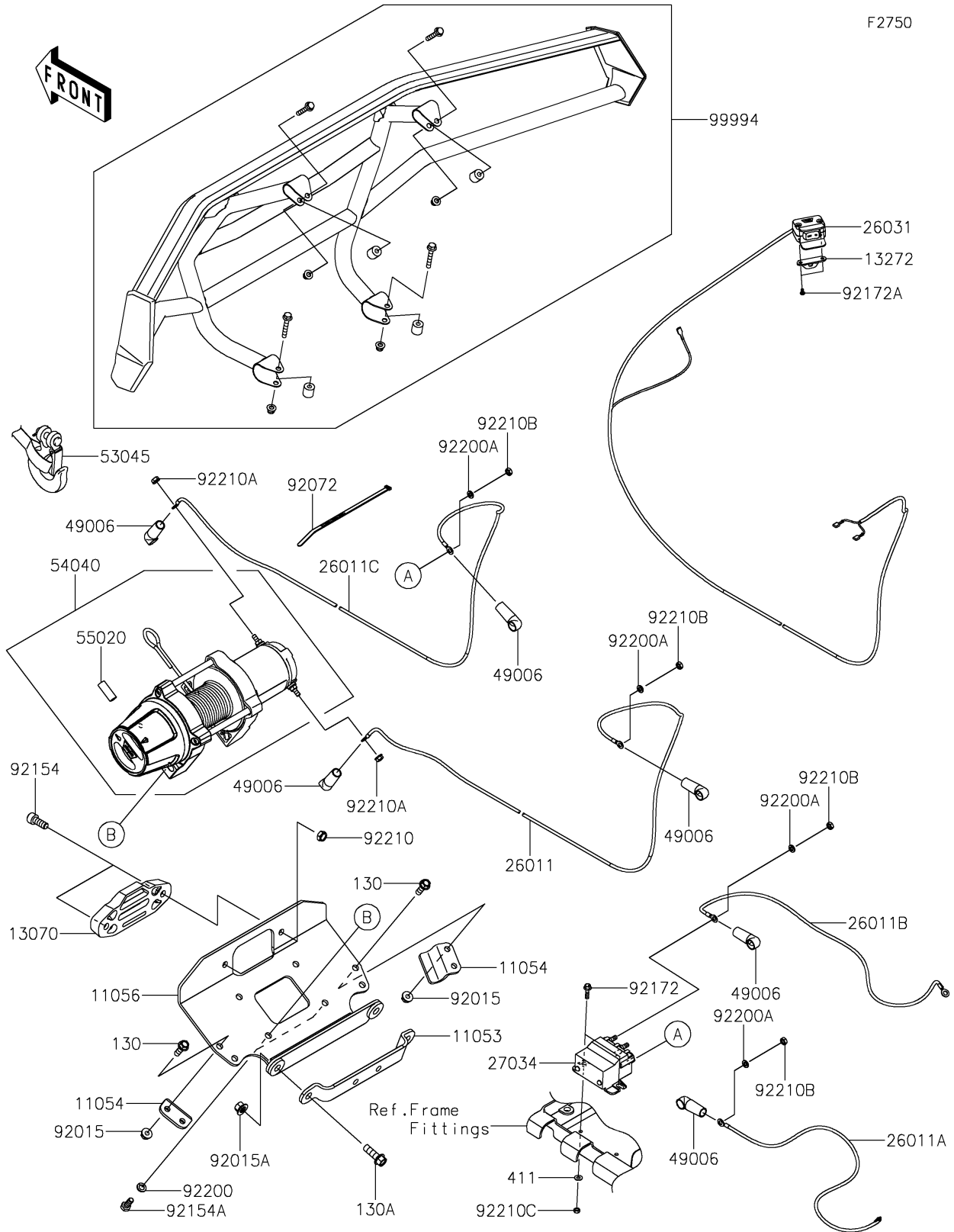


2026 BRUTE FORCE® 750 SE EPS

PARTS DIAGRAM

Other(STFNN)



2026 BRUTE FORCE® 750 SE EPS

PARTS LIST

Other(STFNN)

ITEM NAME	PART NUMBER	QUANTITY
BRACKET,WINCH MOUNT,BACK (Ref # 11053)	11053-1336	1
BRACKET,WINCH MOUNT,SIDE (Ref # 11054)	11054-1633	2
BRACKET,WINCH MOUNT (Ref # 11056)	11056-1489	1
GUIDE,FAIRLEAD (Ref # 13070)	13070-1567	1
PLATE,HANDLEBAR SWITCH (Ref # 13272)	13272-3847	1
WIRE-LEAD,BLUE (Ref # 26011)	26011-1960	1
WIRE-LEAD,RED (Ref # 26011A)	26011-1972	1
WIRE-LEAD,BLACK (Ref # 26011B)	26011-1973	1
WIRE-LEAD,YELLOW (Ref # 26011C)	26011-1974	1
HARNESS,HANDLEBAR SWITCH (Ref # 26031)	26031-7354	1
RELAY,CONTACTOR (Ref # 27034)	27034-0008	1
BOOT (Ref # 49006)	49006-0601	6
HOOK-ASSY (Ref # 53045)	53045-0050	1
WINCH,VRX25-S (Ref # 54040)	54040-0019	1
GUARD,CABLE CHAFE (Ref # 55020)	55020-2588	1
NUT,FLANGED,8MM (Ref # 92015)	92015-1406	4
NUT,FLANGED,10MM (Ref # 92015A)	92015-1727	2
BAND,L=292.1 (Ref # 92072)	92072-3509	4
BOLT,10X25 (Ref # 92154)	92154-4277	2
BOLT,8X25 (Ref # 92154A)	92154-7856	4
SCREW,FLANGED,5X20 (Ref # 92172)	92172-1422	2
SCREW (Ref # 92172A)	92172-1683	2
WASHER,8 LOCK (Ref # 92200)	92200-2867	4
WASHER,6 LOCK (Ref # 92200A)	92200-2868	4
NUT,LOCK,M10 (Ref # 92210)	92210-1432	2
NUT,FLANGED,6MM (Ref # 92210A)	92210-1863	2
NUT,M6X1.00 (Ref # 92210B)	92210-2342	4
NUT,M5X0.80 (Ref # 92210C)	92210-2376	2
BRUSH GUARD (Ref # 99994)	99994-1948	1

2026 BRUTE FORCE[®] 750 SE EPS

PARTS LIST

Other(STFNN)

ITEM NAME	PART NUMBER	QUANTITY
BOLT-FLANGED,8X25 (Ref # 130)	130BB0825	4
BOLT-FLANGED,10X30 (Ref # 130A)	130BB1030	2
WASHER-PLAIN,5MM (Ref # 411)	411AA0500	2