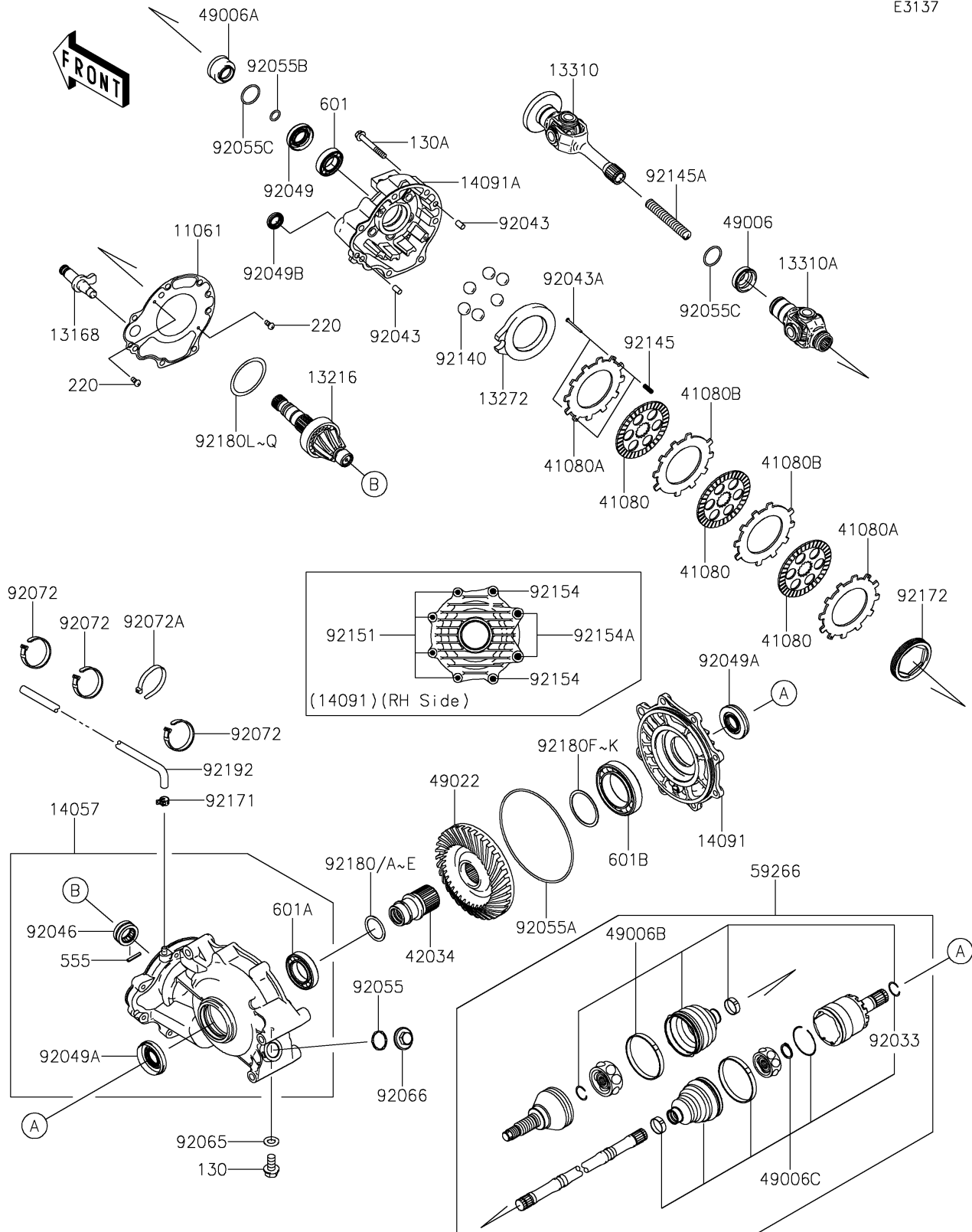


2026 BRUTE FORCE® 750 SE EPS

PARTS DIAGRAM

Drive Shaft-Rear

E3137



2026 BRUTE FORCE® 750 SE EPS

PARTS LIST

Drive Shaft-Rear

ITEM NAME	PART NUMBER	QUANTITY
GASKET,SOFT METAL (Ref # 11061)	11061-0059	1
LEVER,BRAKE (Ref # 13168)	13168-0042	1
GEAR-COMP (Ref # 13216)	13216-0871	1
PLATE (Ref # 13272)	13272-1083	1
SHAFT-ASSY,ENGINE SIDE (Ref # 13310)	13310-0028	1
SHAFT-ASSY,GEAR-ASSY SIDE (Ref # 13310A)	13310-0558	1
CASE-COMP-GEAR (Ref # 14057)	14057-0010	1
COVER,RH (Ref # 14091)	14091-0142	1
COVER,FR (Ref # 14091A)	14091-0143	1
DISC,FRICTION (Ref # 41080)	41080-1482	3
DISC,PRESSURE (Ref # 41080A)	41080-1483	2
DISC,SEPARATER (Ref # 41080B)	41080-1484	2
COUPLING (Ref # 42034)	42034-0006	1
BOOT (Ref # 49006)	49006-0007	1
BOOT (Ref # 49006A)	49006-0008	1
BOOT,UJ (Ref # 49006B)	49006-0064	2
BOOT,DOJ (Ref # 49006C)	49006-0065	2
GEAR-BEVEL,35T (Ref # 49022)	49022-0609	1
JOINT-BALL (Ref # 59266)	59266-0023	2
RING-SNAP (Ref # 92033)	92033-0835	2
PIN,8X14 (Ref # 92043)	92043-1567	2
PIN,3X35 (Ref # 92043A)	92043-1617	2
BEARING-NEEDLE,AH502504A (Ref # 92046)	92046-1280	1
SEAL-OIL,HTGY 24X45X9.5 (Ref # 92049)	92049-0028	1
SEAL-OIL,SDD7 25X57X7 HS (Ref # 92049A)	92049-0029	2
SEAL-OIL,TC17X28X6 (Ref # 92049B)	92049-1537	1
RING-O (Ref # 92055)	92055-0122	1
RING-O,158.5X3.70 (Ref # 92055A)	92055-1631	1
RING-O,18X24X3 (Ref # 92055B)	92055-1633	1

2026 BRUTE FORCE® 750 SE EPS

PARTS LIST

Drive Shaft-Rear

ITEM NAME	PART NUMBER	QUANTITY
RING-O,30X35X2.5 (Ref # 92055C)	92055-1693	2
GASKET,8.5X16X1 (Ref # 92065)	92065-023	1
PLUG (Ref # 92066)	92066-1303	1
BAND,L=186 (Ref # 92072)	92072-056	3
BAND,L=140 (Ref # 92072A)	92072-1293	1
BALL,D/O#12 (Ref # 92140)	92140-1064	6
SPRING,RR BRAKE (Ref # 92145)	92145-1301	2
SPRING,PROPELLER SHAFT (Ref # 92145A)	92145-1304	1
BOLT,8X30 (Ref # 92151)	92151-1908	4
BOLT,10X35 (Ref # 92154)	92154-1823	2
BOLT,12X35 (Ref # 92154A)	92154-1824	2
CLAMP (Ref # 92171)	92171-0515	1
SCREW,SET,76X12 (Ref # 92172)	92172-0771	1
SHIM,35.2X44.0X1.2 (Ref # 92180)	92180-0161	AR
SHIM,35.2X44.0X1.0 (Ref # 92180A)	92180-0162	AR
SHIM,35.2X44.0X0.8 (Ref # 92180B)	92180-0163	AR
SHIM,35.2X44.0X0.5 (Ref # 92180C)	92180-0164	AR
SHIM,35.2X44.0X0.2 (Ref # 92180D)	92180-0165	AR
SHIM,35.2X44.0X0.15 (Ref # 92180E)	92180-0166	AR
SHIM,55X64X0.15 (Ref # 92180F)	92180-1417	AR
SHIM,55X64X0.20 (Ref # 92180G)	92180-1418	AR
SHIM,55X64X0.50 (Ref # 92180H)	92180-1419	AR
SHIM,55X64X0.80 (Ref # 92180I)	92180-1420	AR
SHIM,55X64X1.00 (Ref # 92180J)	92180-1421	AR
SHIM,55X64X1.20 (Ref # 92180K)	92180-1422	AR
SHIM,60X72X0.15 (Ref # 92180L)	92180-1423	AR
SHIM,60X72X0.20 (Ref # 92180M)	92180-1424	AR
SHIM,60X72X0.50 (Ref # 92180N)	92180-1425	AR
SHIM,60X72X0.80 (Ref # 92180O)	92180-1426	AR

2026 BRUTE FORCE® 750 SE EPS

PARTS LIST

Drive Shaft-Rear

ITEM NAME	PART NUMBER	QUANTITY
SHIM,60X72X1.00 (Ref # 92180P)	92180-1427	AR
SHIM,60X72X1.20 (Ref # 92180Q)	92180-1428	AR
TUBE,BREATHER,L=1680MM (Ref # 92192)	92192-0210	1
BOLT-FLANGED,8X16 (Ref # 130)	130BA0816	1
BOLT-FLANGED,8X60 (Ref # 130A)	130CA0860	7
SCREW-PAN-CROS,4X8 (Ref # 220)	220AA0408	2
PIN-SPRING (Ref # 555)	555A0428	1
BEARING-BALL (Ref # 601)	601A6005	1
BEARING-BALL,#6007 (Ref # 601A)	601A6007	1
BEARING-BALL (Ref # 601B)	601A6011	1