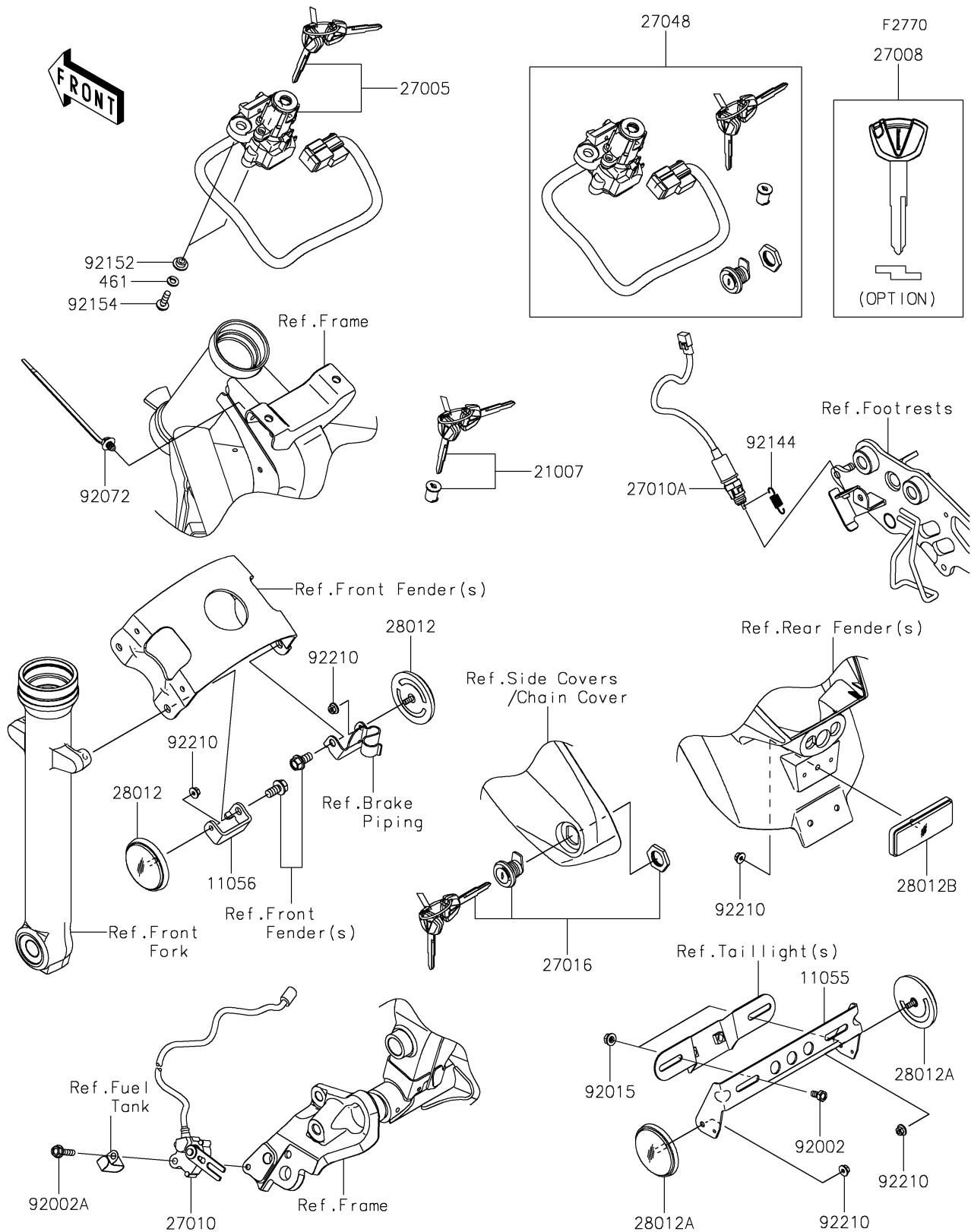


# 2024 Vulcan S CAFÉ

## PARTS DIAGRAM

### Ignition Switch/Locks/Reflectors



# 2024 Vulcan S CAFÉ

## PARTS LIST

### Ignition Switch/Locks/Reflectors

| ITEM NAME                              | PART NUMBER | QUANTITY |
|--|-------------|----------|
| BRACKET,REFLECTOR (Ref # 11055)        | 11055-1092  | 1        |
| BRACKET,REFLECTOR,LH (Ref # 11056)     | 11056-7698  | 1        |
| ROTOR,LOCK,TANK CAP (Ref # 21007)      | 21007-5077  | 1        |
| SWITCH-ASSY-IGNITION (Ref # 27005)     | 27005-0595  | 1        |
| KEY-LOCK,BLANK (Ref # 27008)           | 27008-0596  | 1        |
| SWITCH,SIDE STAND (Ref # 27010)        | 27010-0722  | 1        |
| SWITCH,RR BRAKE (Ref # 27010A)         | 27010-0760  | 1        |
| LOCK-ASSY (Ref # 27016)                | 27016-5387  | 1        |
| SWITCH-ASSY (Ref # 27048)              | 27048-5053  | 1        |
| REFLECTOR-REFLEX,FR,SIDE (Ref # 28012) | 28012-0001  | 2        |
| REFLECTOR-REFLEX (Ref # 28012A)        | 28012-0002  | 2        |
| REFLECTOR-REFLEX (Ref # 28012B)        | 28012-1077  | 1        |
| BOLT,6X12 (Ref # 92002)                | 92002-1132  | 2        |
| BOLT,FLANGED,6X25 (Ref # 92002A)       | 92002-1582  | 1        |
| NUT,FLANGED,6MM (Ref # 92015)          | 92015-1367  | 2        |
| BAND,OS170-FT7(BLACK) (Ref # 92072)    | 92072-1414  | 1        |
| SPRING,REAR BRAKE SWITCH (Ref # 92144) | 92144-1141  | 1        |
| COLLAR,6.15X10.15X6 (Ref # 92152)      | 92152-1535  | 2        |
| BOLT,FLANGED,6X20 (Ref # 92154)        | 92154-0107  | 2        |
| NUT,FLANGED,5MM (Ref # 92210)          | 92210-0007  | 5        |
| WASHER-SPRING,6MM (Ref # 461)          | 461DA0600   | 2        |