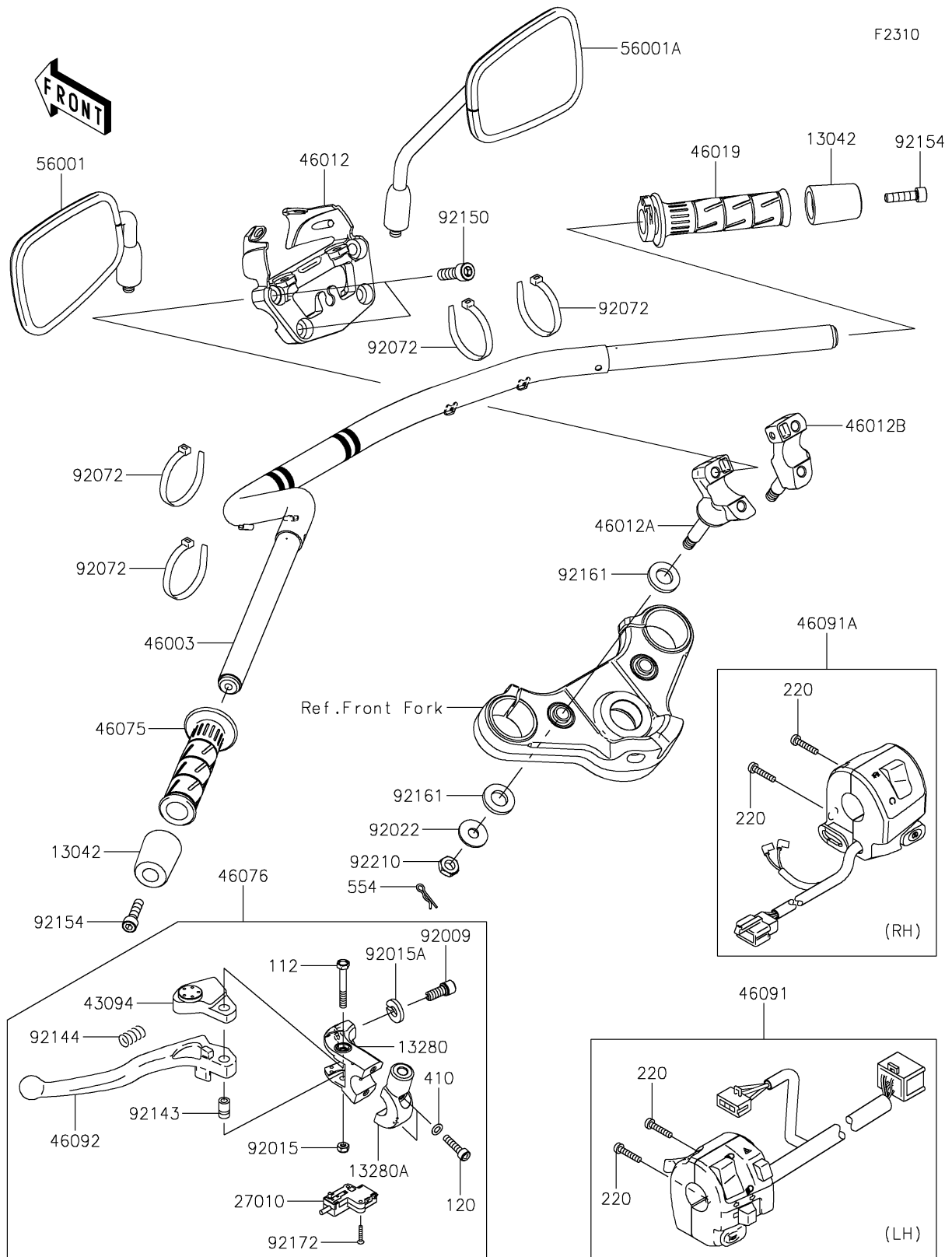


# 2026 VULCAN® S CAFE ABS

## PARTS DIAGRAM

### Handlebar



# 2026 VULCAN® S CAFE ABS

## PARTS LIST

### Handlebar

ITEM NAME	PART NUMBER	QUANTITY
WEIGHT,HANDLE (Ref # 13042)	13042-5002	2
HOLDER,CLUTCH LEVER (Ref # 13280)	13280-0306	1
HOLDER,CLUTCH LEVER (Ref # 13280A)	13280-0307	1
SWITCH,CLUTCH (Ref # 27010)	27010-0729	1
ADJUSTER,CLUTCH LEVER (Ref # 43094)	43094-0556	1
HANDLE,F.S.BLACK (Ref # 46003)	46003-0626-18R	1
HOLDER-HANDLE,UPP,F.S.BLACK (Ref # 46012)	46012-0350-18R	1
HOLDER-HANDLE,LWR,LH,F.S.BLACK (Ref # 46012A)	46012-0351-18R	1
HOLDER-HANDLE,LWR,RH,F.S.BLACK (Ref # 46012B)	46012-0352-18R	1
GRIP-ASSY,THROTTLE (Ref # 46019)	46019-0060	1
GRIP,HANDLE,LH (Ref # 46075)	46075-0564	1
LEVER-ASSY-GRIP,CLUTCH (Ref # 46076)	46076-0137	1
HOUSING-ASSY-CONTROL,LH (Ref # 46091)	46091-0410	1
HOUSING-ASSY-CONTROL,RH (Ref # 46091A)	46091-0551	1
LEVER-GRIP,CLUTCH (Ref # 46092)	46092-0031	1
MIRROR-ASSY,LH (Ref # 56001)	56001-0310	1
MIRROR-ASSY,RH (Ref # 56001A)	56001-0311	1
SCREW,CABLE ADJUST,8MM,BLACK (Ref # 92009)	92009-1134	1
NUT,LOCK,6MM,BLACK (Ref # 92015)	92015-1191	1
NUT,CABLE ADJUST LOCK,8MM,BLK (Ref # 92015A)	92015-1197	1
WASHER,10.2X28X2 (Ref # 92022)	92022-1088	2
BAND,L=140 (Ref # 92072)	92072-0944	4
COLLAR (Ref # 92143)	92143-1379	1
SPRING (Ref # 92144)	92144-1467	1
BOLT,SOCKET,10X30 (Ref # 92150)	92150-1690	4
BOLT,SOCKET,8X30 (Ref # 92154)	92154-0440	2
DAMPER,16.2X30X4 (Ref # 92161)	92161-1659	4
SCREW,3X16 (Ref # 92172)	92172-0183	2
NUT,LOCK,10MM (Ref # 92210)	92210-0784	2

# 2026 VULCAN<sup>®</sup> S CAFE ABS

## PARTS LIST

### Handlebar

ITEM NAME	PART NUMBER	QUANTITY
BOLT-UPSET,6X45 (Ref # 112)	112BB0645	1
BOLT-SOCKET,6X25 (Ref # 120)	120CB0625	2
SCREW-PAN-CROS,5X25 (Ref # 220)	220AB0525	4
WASHER-PLAIN-SMALL,6MM (Ref # 410)	410AB0600	2
PIN-SNAP (Ref # 554)	554DB0800	2