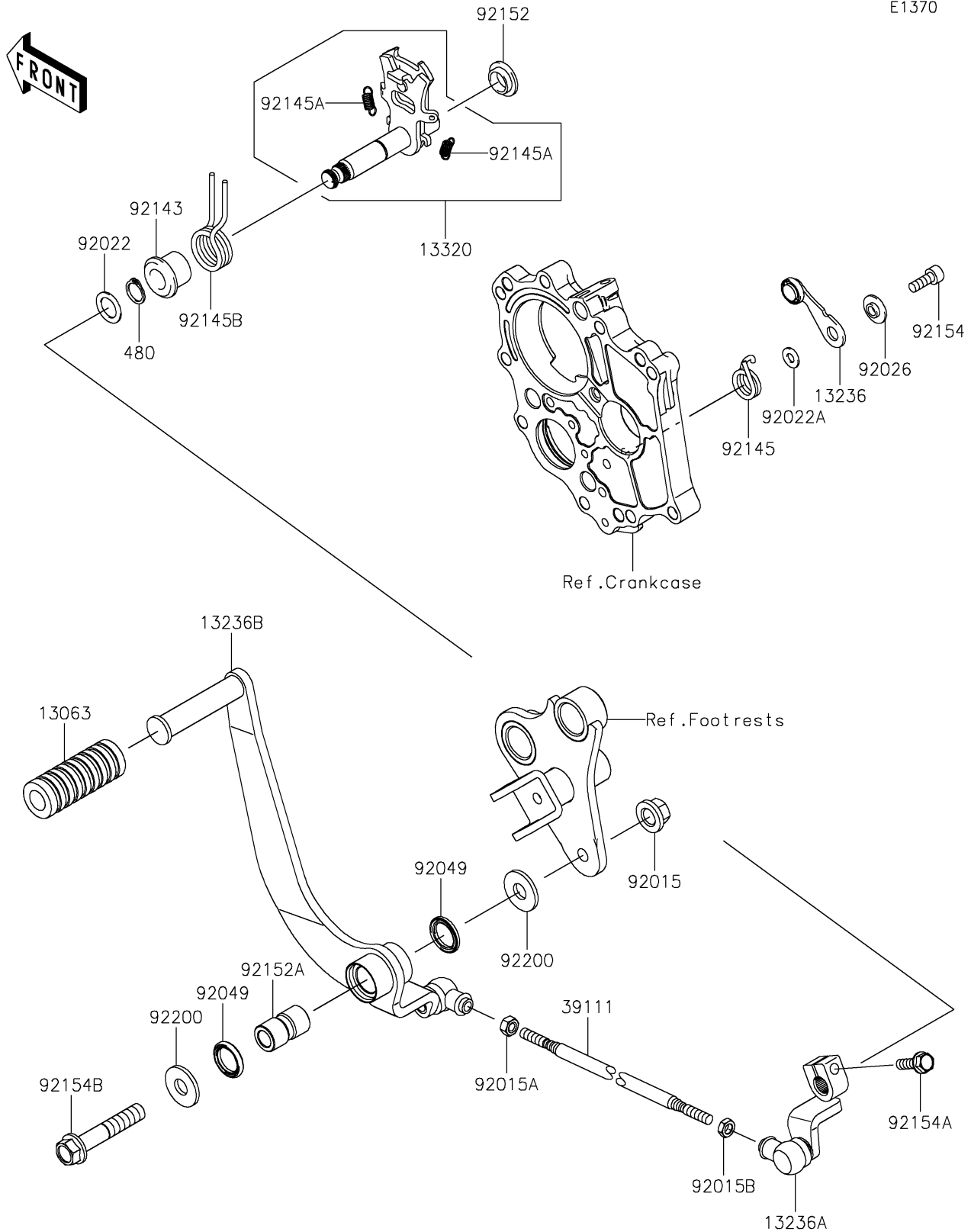


2024 Vulcan S CAFÉ

PARTS DIAGRAM

Gear Change Mechanism

E1370



2024 Vulcan S CAFÉ

PARTS LIST

Gear Change Mechanism

ITEM NAME	PART NUMBER	QUANTITY
DAMPER,PEDAL (Ref # 13063)	13063-002	1
LEVER-COMP,POSITION (Ref # 13236)	13236-0170	1
LEVER-COMP (Ref # 13236A)	13236-0756	1
LEVER-COMP,CHANGE PEDAL (Ref # 13236B)	13236-0780	1
LEVER-ASSY,CHANGE SHAFT (Ref # 13320)	13320-0032	1
ROD-TIE,L=205MM (Ref # 39111)	39111-0332	1
NUT,FLANGED,10MM (Ref # 92015)	92015-077	1
NUT,6MM (Ref # 92015A)	92015-1443	1
NUT,LEFT HANDED,6MM (Ref # 92015B)	92015-1444	1
WASHER,13.3X20X1 (Ref # 92022)	92022-1496	1
WASHER,6X12.8X1.2 (Ref # 92022A)	92022-1827	1
SPACER (Ref # 92026)	92026-1217	1
SEAL-OIL (Ref # 92049)	92049-0093	2
COLLAR,RETURN SPRING (Ref # 92143)	92143-1498	1
SPRING,POSITION (Ref # 92145)	92145-0304	1
SPRING,5.5X0.7X18 (Ref # 92145A)	92145-0703	2
SPRING,CHANGE SHAFT RETURN (Ref # 92145B)	92145-1744	1
COLLAR (Ref # 92152)	92152-1075	1
COLLAR (Ref # 92152A)	92152-1883	1
BOLT,SOCKET,6X16 (Ref # 92154)	92154-0235	1
BOLT,FLANGED,6X20 (Ref # 92154A)	92154-0786	1
BOLT,FLANGED,10X54 (Ref # 92154B)	92154-1730	1
WASHER,11X26X2.6 (Ref # 92200)	92200-0352	2
CIRCLIP-TYPE-C,13MM (Ref # 480)	480J1300	1