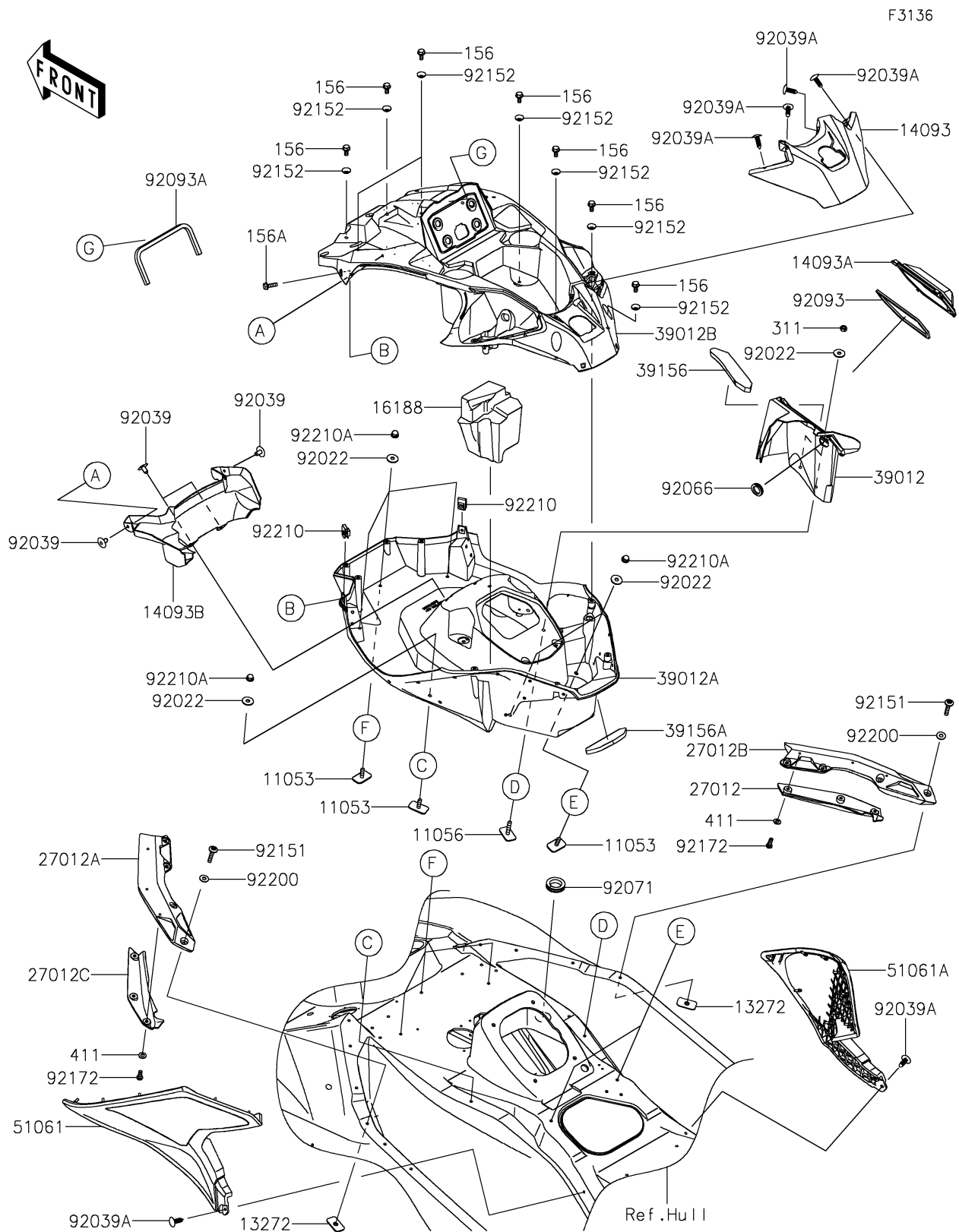


# 2025 Ultra 160LX-S Angler

## PARTS DIAGRAM

### Hull Middle Fittings



# 2025 Ultra 160LX-S Angler

## PARTS LIST

### Hull Middle Fittings

ITEM NAME	PART NUMBER	QUANTITY
BRACKET (Ref # 11053)	11053-3776	6
BRACKET (Ref # 11056)	11056-3724	2
PLATE (Ref # 13272)	13272-3861	8
COVER,CONSOL (Ref # 14093)	14093-1164	1
COVER,WATERPROOF,FR,RH (Ref # 14093A)	14093-1165	1
COVER,HARNESS (Ref # 14093B)	14093-1203	1
FLOAT (Ref # 16188)	16188-0065	1
HOOK,FR,RH,LWR (Ref # 27012)	27012-0890	1
HOOK,FR,LH,UPP (Ref # 27012A)	27012-0912	1
HOOK,FR,RH,UPP (Ref # 27012B)	27012-0913	1
HOOK,FR,LH,LWR (Ref # 27012C)	27012-0914	1
CASE-STORAGE,WATERPROOF,FR,RH (Ref # 39012)	39012-0073	1
CASE-STORAGE,FR,CNT,LWR (Ref # 39012A)	39012-0080	1
CASE-STORAGE,FR,CNT,UPP (Ref # 39012B)	39012-0081	1
PAD (Ref # 39156)	39156-2778	1
PAD (Ref # 39156A)	39156-2815	1
PAD-KNEE,LH,BLACK (Ref # 51061)	51061-0008-6Z	1
PAD-KNEE,RH,BLACK (Ref # 51061A)	51061-0009-6Z	1
WASHER,6.5X20X1.5 (Ref # 92022)	92022-3710	8
RIVET (Ref # 92039)	92039-3785	4
RIVET (Ref # 92039A)	92039-3788	6
PLUG (Ref # 92066)	92066-0984	1
GROMMET,31.5X50X11 (Ref # 92071)	92071-0737	1
SEAL (Ref # 92093)	92093-0760	1
SEAL (Ref # 92093A)	92093-0808	1
BOLT,SOCKET,6X30 (Ref # 92151)	92151-1605	8
COLLAR (Ref # 92152)	92152-3794	12
SCREW,TAPPING,6X16 (Ref # 92172)	92172-1441	6
WASHER,6.5X16X1.0 (Ref # 92200)	92200-3712	8

# 2025 Ultra 160LX-S Angler

## PARTS LIST

### Hull Middle Fittings

ITEM NAME	PART NUMBER	QUANTITY
NUT,6MM (Ref # 92210)	92210-3768	2
NUT,CAP,6MM (Ref # 92210A)	92210-3785	6
BOLT-WP,6X14 (Ref # 156)	156R0614	12
BOLT-WP,6X20 (Ref # 156A)	156R0620	2
NUT-HEX,6MM (Ref # 311)	311R0600	2
WASHER-PLAIN,6MM (Ref # 411)	411S0600	6