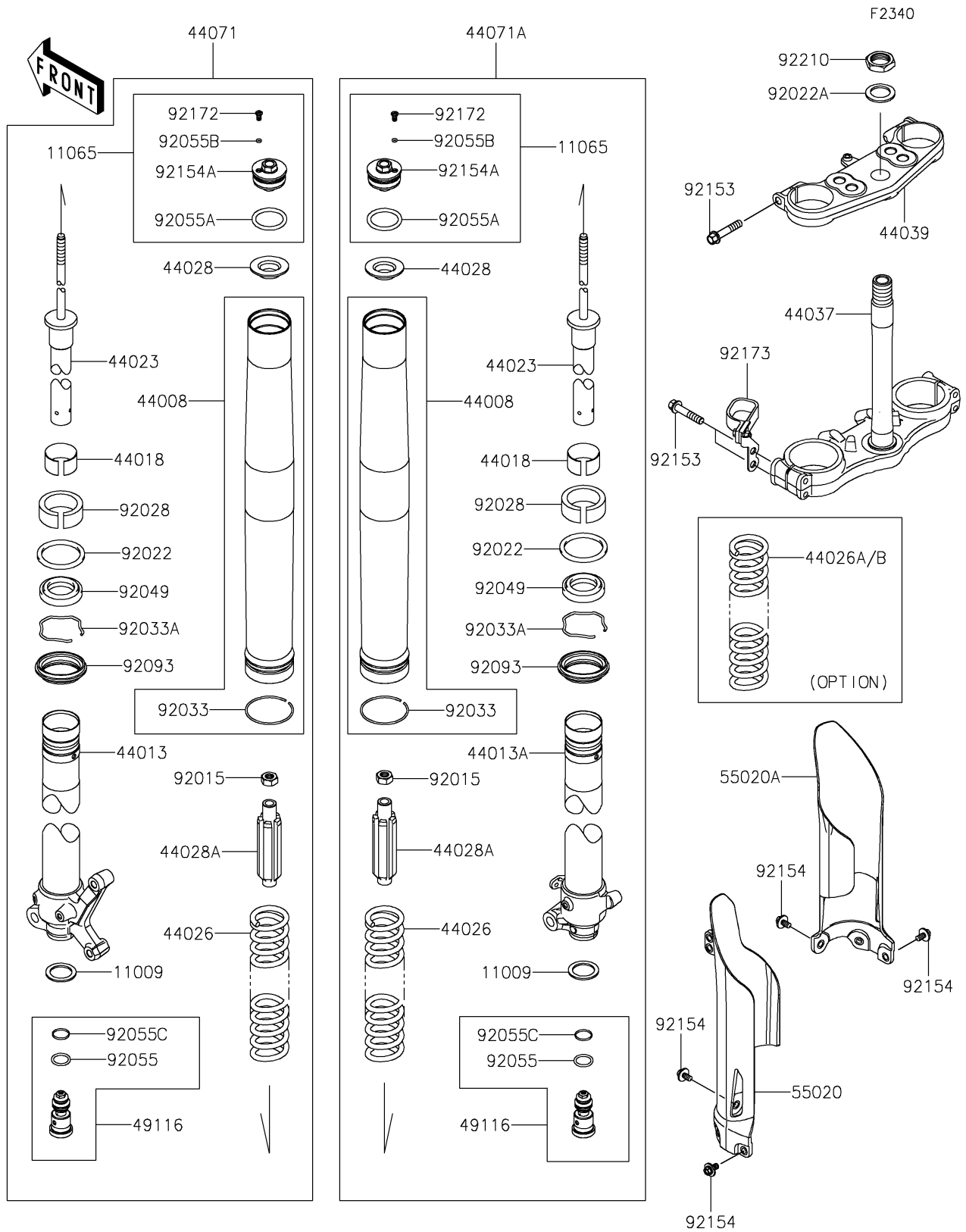


# 2026 KX™ 85 L

## PARTS DIAGRAM

### Front Fork



# 2026 KX™ 85 L

## PARTS LIST

### Front Fork

ITEM NAME	PART NUMBER	QUANTITY
GASKET,FORK CYLINDER BOLT (Ref # 11009)	11009-1592	2
CAP,FORK,TOP (Ref # 11065)	11065-1538	2
PIPE-FORK OUTER (Ref # 44008)	44008-0143	2
PIPE-FORK INNER,LH (Ref # 44013)	44013-0465	1
PIPE-FORK INNER,RH (Ref # 44013A)	44013-0466	1
PISTON-FORK,INNER PIPE (Ref # 44018)	44018-1056	2
CYLINDER-SET-FORK (Ref # 44023)	44023-0211	2
SPRING-FRONT FORK,K=3.1N/MM (Ref # 44026)	44026-0320	2
SPRING-FRONT FORK,K=2.9N/MM (Ref # 44026A)	44026-0328	1
SPRING-FRONT FORK,K=3.3N/MM (Ref # 44026B)	44026-0332	1
GUIDE-FORK SPRING (Ref # 44028)	44028-0009	2
GUIDE-FORK SPRING (Ref # 44028A)	44028-0010	2
HOLDER-FORK UNDER (Ref # 44037)	44037-0236	1
HOLDER-FORK UPPER (Ref # 44039)	44039-0230	1
DAMPER-ASSY,FORK,LH (Ref # 44071)	44071-1787	1
DAMPER-ASSY,FORK,RH (Ref # 44071A)	44071-1788	1
VALVE-ASSY,BASE (Ref # 49116)	49116-0728	2
GUARD,FORK,LH,L.GREEN (Ref # 55020)	55020-2623-290	1
GUARD,FORK,RH,L.GREEN (Ref # 55020A)	55020-2624-290	1
NUT (Ref # 92015)	92015-1839	2
WASHER (Ref # 92022)	92022-1299	2
WASHER,STEERING STEM (Ref # 92022A)	92022-1873	1
BUSHING (Ref # 92028)	92028-1581	2
RING-SNAP (Ref # 92033)	92033-0080	2
RING-SNAP (Ref # 92033A)	92033-1077	2
SEAL-OIL (Ref # 92049)	92049-0007	2
RING-O (Ref # 92055)	92055-1010	2
RING-O,FORK,AIR TUBE (Ref # 92055A)	92055-1333	2
RING-O,2.8X6.6X1.9 (Ref # 92055B)	92055-1441	2

# 2026 KX™ 85 L

## PARTS LIST

### Front Fork

ITEM NAME	PART NUMBER	QUANTITY
RING-O,FORK VALVE (Ref # 92055C)	92055-1502	2
SEAL,FORK OUTER TUBE (Ref # 92093)	92093-1342	2
BOLT,8X40 (Ref # 92153)	92153-0020	6
BOLT,FLANGED,6X12 (Ref # 92154)	92154-2970	6
BOLT (Ref # 92154A)	92154-7910	2
SCREW (Ref # 92172)	92172-1736	2
CLAMP (Ref # 92173)	92173-3777	1
NUT,STEERING STEM,22MM (Ref # 92210)	92210-1521	1