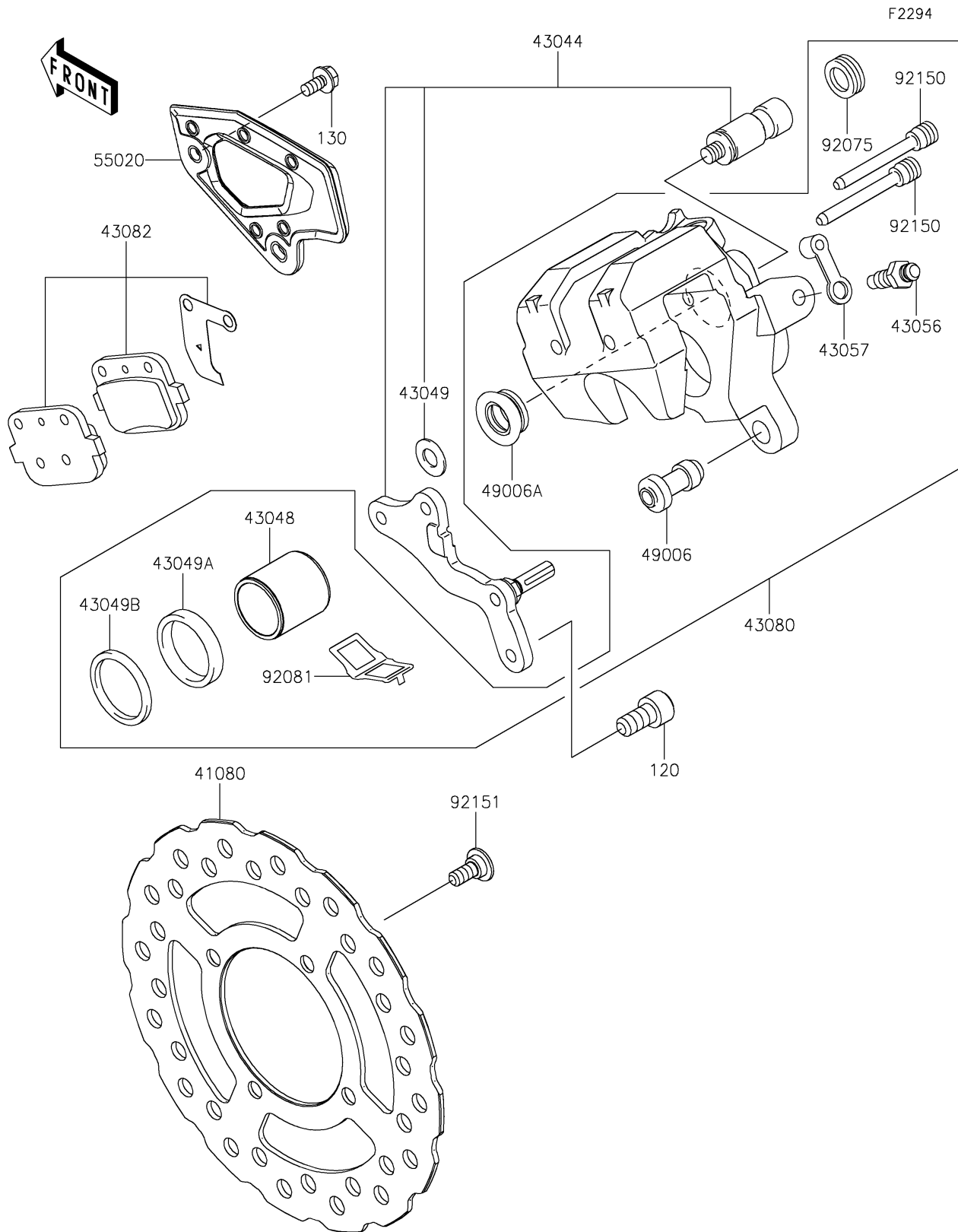


# 2026 KX™ 85 L

## PARTS DIAGRAM

### Rear Brake



# 2026 KX™ 85 L

## PARTS LIST

### Rear Brake

| ITEM NAME                            | PART NUMBER   | QUANTITY |
|--------------------------------------|---------------|----------|
| DISC,RR (Ref # 41080)                | 41080-0799    | 1        |
| HOLDER-COMP-CALIPER,RR (Ref # 43044) | 43044-0113    | 1        |
| PISTON-CALIPER (Ref # 43048)         | 43048-1090    | 1        |
| PACKING (Ref # 43049)                | 43049-1025    | 1        |
| PACKING,PISTON SEAL (Ref # 43049A)   | 43049-1060    | 1        |
| PACKING,PISTON SEAL (Ref # 43049B)   | 43049-1061    | 1        |
| BREATHER (Ref # 43056)               | 43056-1055    | 1        |
| CAP-BREATHER (Ref # 43057)           | 43057-1001    | 1        |
| CALIPER-SUB-ASSY,RR (Ref # 43080)    | 43080-0277    | 1        |
| PAD-ASSY-BRAKE (Ref # 43082)         | 43082-0174    | 1        |
| BOOT,CALIPER (Ref # 49006)           | 49006-1088    | 1        |
| BOOT,CALIPER (Ref # 49006A)          | 49006-1089    | 1        |
| GUARD,CALIPER,BLACK (Ref # 55020)    | 55020-2622-6Z | 1        |
| DAMPER (Ref # 92075)                 | 92075-1414    | 1        |
| SPRING,PAD (Ref # 92081)             | 92081-1502    | 1        |
| BOLT (Ref # 92150)                   | 92150-1144    | 2        |
| BOLT,DISC PLATE,6MM (Ref # 92151)    | 92151-1799    | 4        |
| BOLT-SOCKET,8X16 (Ref # 120)         | 120CA0816     | 2        |
| BOLT-FLANGED,6X12 (Ref # 130)        | 130BA0612     | 2        |