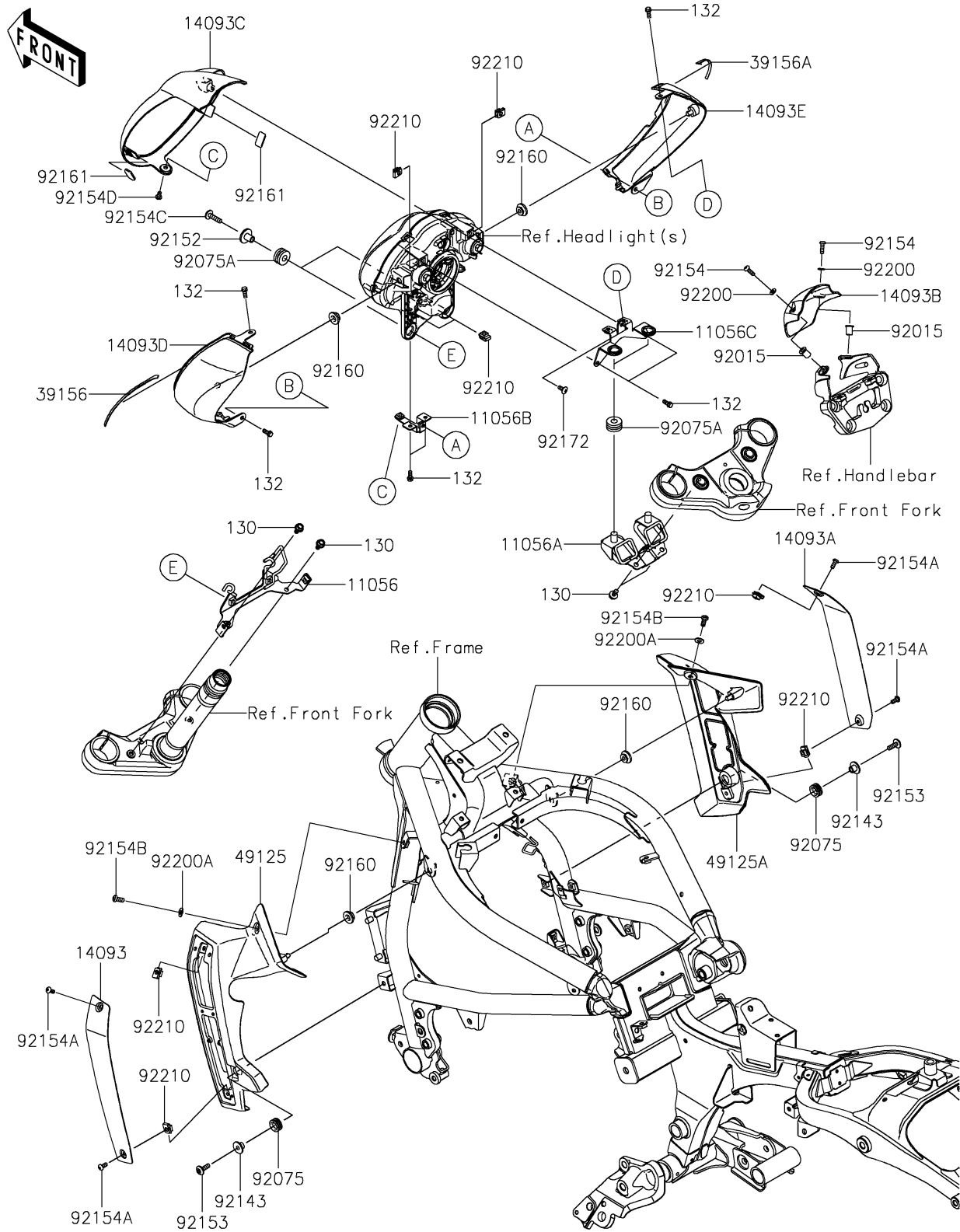


2026 Vulcan S

PARTS DIAGRAM

Cowling

F2871



2026 Vulcan S

PARTS LIST

Cowling

ITEM NAME	PART NUMBER	QUANTITY
BRACKET,HEAD LAMP,LWR (Ref # 11056)	11056-4110	1
BRACKET,HEAD LAMP,UPP (Ref # 11056A)	11056-4380	1
BRACKET,HEAD LAMP COVER,LWR (Ref # 11056B)	11056-4384	1
BRACKET,HEAD LAMP COVER,UPP (Ref # 11056C)	11056-4385	1
COVER,SHROUD,LH,EBONY (Ref # 14093)	14093-0113-H8	1
COVER,SHROUD,RH,EBONY (Ref # 14093A)	14093-0114-H8	1
COVER,METER (Ref # 14093B)	14093-0128	1
COVER,HEAD LAMP,EBONY (Ref # 14093C)	14093-0339-H8	1
COVER,HEAD LAMP,LH,F.EBONY (Ref # 14093D)	14093-0496-45L	1
COVER,HEAD LAMP,RH,F.EBONY (Ref # 14093E)	14093-0497-45L	1
PAD,HEAD LAMP COVER,LH (Ref # 39156)	39156-2120	1
PAD,HEAD LAMP COVER,RH (Ref # 39156A)	39156-2121	1
SHROUD,LH (Ref # 49125)	49125-0586	1
SHROUD,RH (Ref # 49125A)	49125-0587	1
NUT,WELL,5MM (Ref # 92015)	92015-1757	2
DAMPER (Ref # 92075)	92075-1634	2
DAMPER,10X24X12 (Ref # 92075A)	92075-1690	4
COLLAR (Ref # 92143)	92143-1962	2
COLLAR,6.5X24X15.3 (Ref # 92152)	92152-2106	2
BOLT,6X18 (Ref # 92153)	92153-0816	2
BOLT,SOCKET,5X16 (Ref # 92154)	92154-1470	2
BOLT,SOCKET,5X12 (Ref # 92154A)	92154-1471	4
BOLT,SOCKET,6X14 (Ref # 92154B)	92154-1512	2
BOLT,SOCKET,6X25 (Ref # 92154C)	92154-1532	2
BOLT,SOCKET,5X10 (Ref # 92154D)	92154-1547	1
DAMPER (Ref # 92160)	92160-1613	4
DAMPER,12X23 (Ref # 92161)	92161-1367	2
SCREW,5X12 (Ref # 92172)	92172-0821	1
WASHER,5.3X11X1 (Ref # 92200)	92200-0973	2

2026 Vulcan S

PARTS LIST

Cowling

ITEM NAME	PART NUMBER	QUANTITY
WASHER,6.5X14X1 (Ref # 92200A)	92200-1388	2
NUT,PLATE,5MM (Ref # 92210)	92210-0935	8
BOLT-FLANGED,6X12 (Ref # 130)	130BB0612	4
BOLT-FLANGED-SMALL,5X12 (Ref # 132)	132BB0512	7