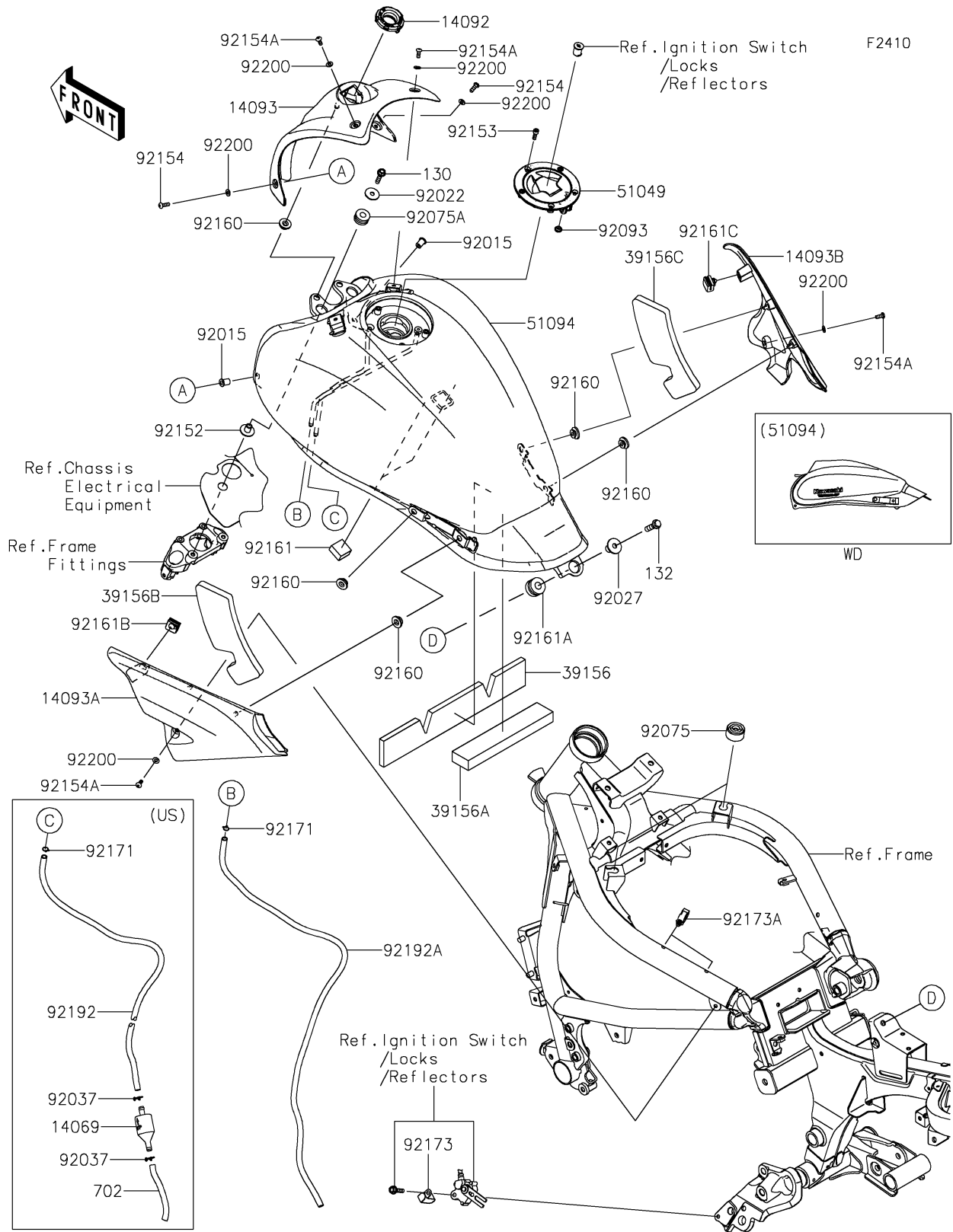


# 2026 Vulcan S

## PARTS DIAGRAM

### Fuel Tank



# 2026 Vulcan S

## PARTS LIST

### Fuel Tank

ITEM NAME	PART NUMBER	QUANTITY
BREATHER (Ref # 14069)	14069-0703	1
COVER,IGNITION SW. (Ref # 14092)	14092-1033	1
COVER,TANK,FR,F.S.BLACK (Ref # 14093)	14093-0105-18T	1
COVER,TANK,LH (Ref # 14093A)	14093-0106	1
COVER,TANK,RH (Ref # 14093B)	14093-0107	1
PAD,53X334X10 (Ref # 39156)	39156-1833	1
PAD,38X200X20 (Ref # 39156A)	39156-1893	1
PAD,TANK COVER,LH (Ref # 39156B)	39156-1929	1
PAD,TANK COVER,RH (Ref # 39156C)	39156-1930	1
CAP-TANK,FUEL (Ref # 51049)	51049-0749	1
TANK-COMP-FUEL,M.F.S.BLACK (Ref # 51094)	51094-5386-739	1
NUT,WELL,5MM (Ref # 92015)	92015-1757	2
WASHER,7X24X1.6 (Ref # 92022)	92022-228	2
COLLAR,L=19.3 (Ref # 92027)	92027-1780	1
CLAMP,TUBE (Ref # 92037)	92037-147	2
DAMPER (Ref # 92075)	92075-015	2
DAMPER,10X24X12 (Ref # 92075A)	92075-1690	2
SEAL,FUEL TANK CAP (Ref # 92093)	92093-1030	1
COLLAR,6.5X10X13.1 (Ref # 92152)	92152-0910	2
BOLT,SOCKET,5X16 (Ref # 92153)	92153-1616	3
BOLT,SOCKET,5X16 (Ref # 92154)	92154-1470	2
BOLT,SOCKET,5X12 (Ref # 92154A)	92154-1471	4
DAMPER (Ref # 92160)	92160-1613	6
DAMPER,T=13 (Ref # 92161)	92161-0792	2
DAMPER,12X28X17 (Ref # 92161A)	92161-1494	1
DAMPER,TANK COVER,LH (Ref # 92161B)	92161-1679	1
DAMPER,TANK COVER,RH (Ref # 92161C)	92161-1744	1
CLAMP,8X0.7 (Ref # 92171)	92171-1973	1
CLAMP (Ref # 92173)	92173-0833	1

# 2026 Vulcan S

## PARTS LIST

### Fuel Tank

ITEM NAME	PART NUMBER	QUANTITY
CLAMP,HOLDER CLIP (Ref # 92173A)	92173-0868	2
TUBE,BREATHER,6X9X720 (Ref # 92192)	92192-1389	1
TUBE,DRAIN,6X9X870 (Ref # 92192A)	92192-1433	1
WASHER,5.3X11X1 (Ref # 92200)	92200-0973	6
BOLT-FLANGED,6X25 (Ref # 130)	130CA0625	2
BOLT-FLANGED-SMALL,8X30 (Ref # 132)	132BA0830	1
TUBE-RUBBER,7X10X100 (Ref # 702)	702A07100	1
CLAMP,8X0.7 (Ref # 92171)	92171-1973	2