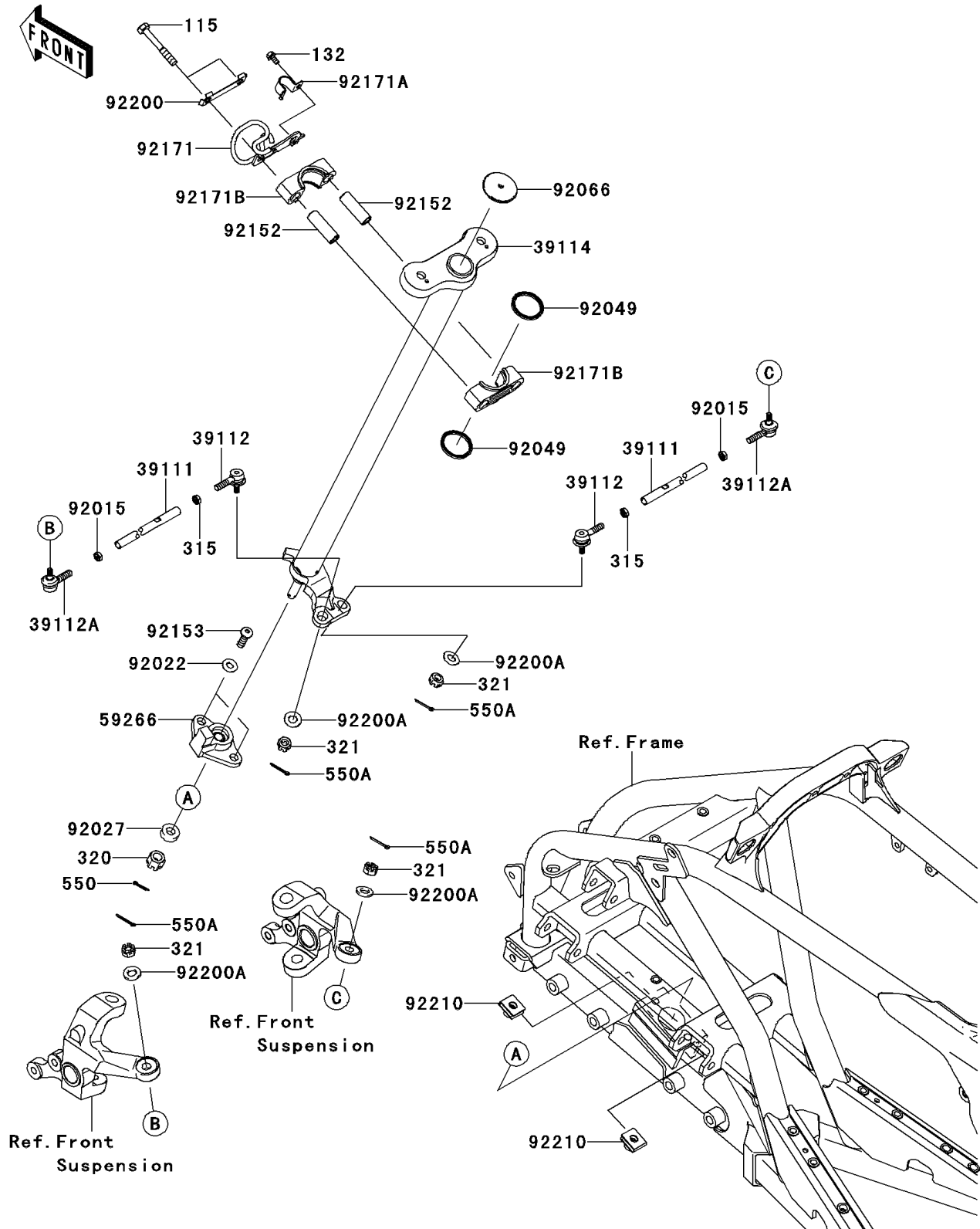


# 2009 KFX<sup>®</sup> 450R

## PARTS DIAGRAM

### Steering Shaft

F2121



# 2009 KFX<sup>®</sup> 450R

## PARTS LIST

### Steering Shaft

ITEM NAME	PART NUMBER	QUANTITY
BOLT-SMALL-UPSET,8X55 (Ref # 115)	115CB0855	2
BOLT-FLANGED-SMALL,5X10 (Ref # 132)	132BA0510	1
NUT-HEX-FINE (Ref # 315)	315AB1200	2
NUT-CASTLE (Ref # 320)	320BA1000	1
NUT-CASTLE (Ref # 321)	321BA1000	4
PIN-COTTER,2.5X18 (Ref # 550)	550AA2518	1
PIN-COTTER,2.5X20 (Ref # 550A)	550AA2520	4
ROD-TIE (Ref # 39111)	39111-0052	2
RODEND-TIE,LEFT HANDED (Ref # 39112)	39112-0011	2
RODEND-TIE,RIGHT HANDED (Ref # 39112A)	39112-0012	2
SHAFT-COMP-STRG,F.BLACK (Ref # 39114)	39114-0012-21	1
JOINT-BALL (Ref # 59266)	59266-0026	1
NUT,12MM,LEFT SCREW (Ref # 92015)	92015-1532	2
WASHER,PLAIN,8MM (Ref # 92022)	92022-3043	2
COLLAR,10X21.3X7 (Ref # 92027)	92027-1817	1
SEAL-OIL,SR31.8X37.5X3.8LR (Ref # 92049)	92049-7501	2
PLUG (Ref # 92066)	92066-0032	1
COLLAR,9.1X13.95X42 (Ref # 92152)	92152-7501	2
BOLT,SOCKET,8X25 (Ref # 92153)	92153-1838	2
CLAMP,CABLE (Ref # 92171)	92171-0855	1
CLAMP,BRAKE HOSE (Ref # 92171A)	92171-0856	1
CLAMP,STEERING (Ref # 92171B)	92171-7501	2
WASHER,STEERING CLAMP (Ref # 92200)	92200-0384	1
WASHER,10.7X20X2.5 (Ref # 92200A)	92200-0393	4
NUT,8MM (Ref # 92210)	92210-0376	2