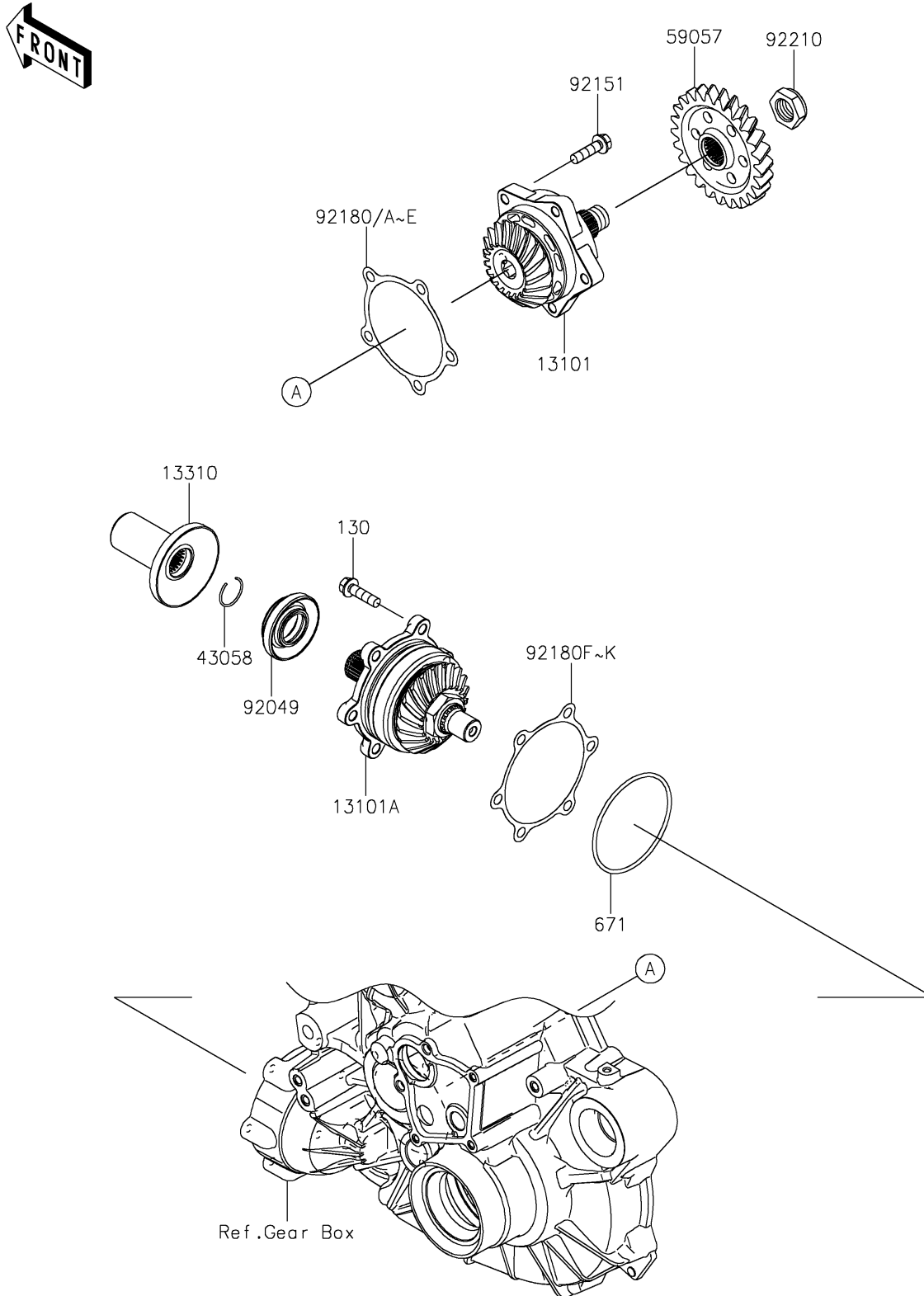


2026 RIDGE CREW

PARTS DIAGRAM

Bevel Gear

E3130



2026 RIDGE CREW

PARTS LIST

Bevel Gear

| ITEM NAME | PART NUMBER | QUANTITY |
|-----------------------------------|-------------|----------|
| GEAR-ASSY,DRIVE (Ref # 13101) | 13101-0689 | 1 |
| GEAR-ASSY,DRIVEN (Ref # 13101A) | 13101-0736 | 1 |
| SHAFT-ASSY (Ref # 13310) | 13310-0584 | 1 |
| RING (Ref # 43058) | 43058-0018 | 1 |
| GEAR-HELICAL,25T (Ref # 59057) | 59057-0045 | 1 |
| SEAL-OIL (Ref # 92049) | 92049-0160 | 1 |
| BOLT,8X30 (Ref # 92151) | 92151-1908 | 5 |
| SHIM,DRIVE,T=0.15 (Ref # 92180) | 92180-1543 | AR |
| SHIM,DRIVE,T=0.20 (Ref # 92180A) | 92180-1544 | AR |
| SHIM,DRIVE,T=0.50 (Ref # 92180B) | 92180-1545 | AR |
| SHIM,DRIVE,T=0.80 (Ref # 92180C) | 92180-1546 | AR |
| SHIM,DRIVE,T=1.00 (Ref # 92180D) | 92180-1547 | AR |
| SHIM,DRIVE,T=1.20 (Ref # 92180E) | 92180-1548 | AR |
| SHIM,DRIVEN,T=0.15 (Ref # 92180F) | 92180-1549 | AR |
| SHIM,DRIVEN,T=0.20 (Ref # 92180G) | 92180-1550 | AR |
| SHIM,DRIVEN,T=0.50 (Ref # 92180H) | 92180-1551 | AR |
| SHIM,DRIVEN,T=0.80 (Ref # 92180I) | 92180-1552 | AR |
| SHIM,DRIVEN,T=1.00 (Ref # 92180J) | 92180-1553 | AR |
| SHIM,DRIVEN,T=1.20 (Ref # 92180K) | 92180-1554 | AR |
| NUT (Ref # 92210) | 92210-1790 | 1 |
| BOLT-FLANGED,8X30 (Ref # 130) | 130BA0830 | 6 |
| O RING (Ref # 671) | 671D2585 | 1 |