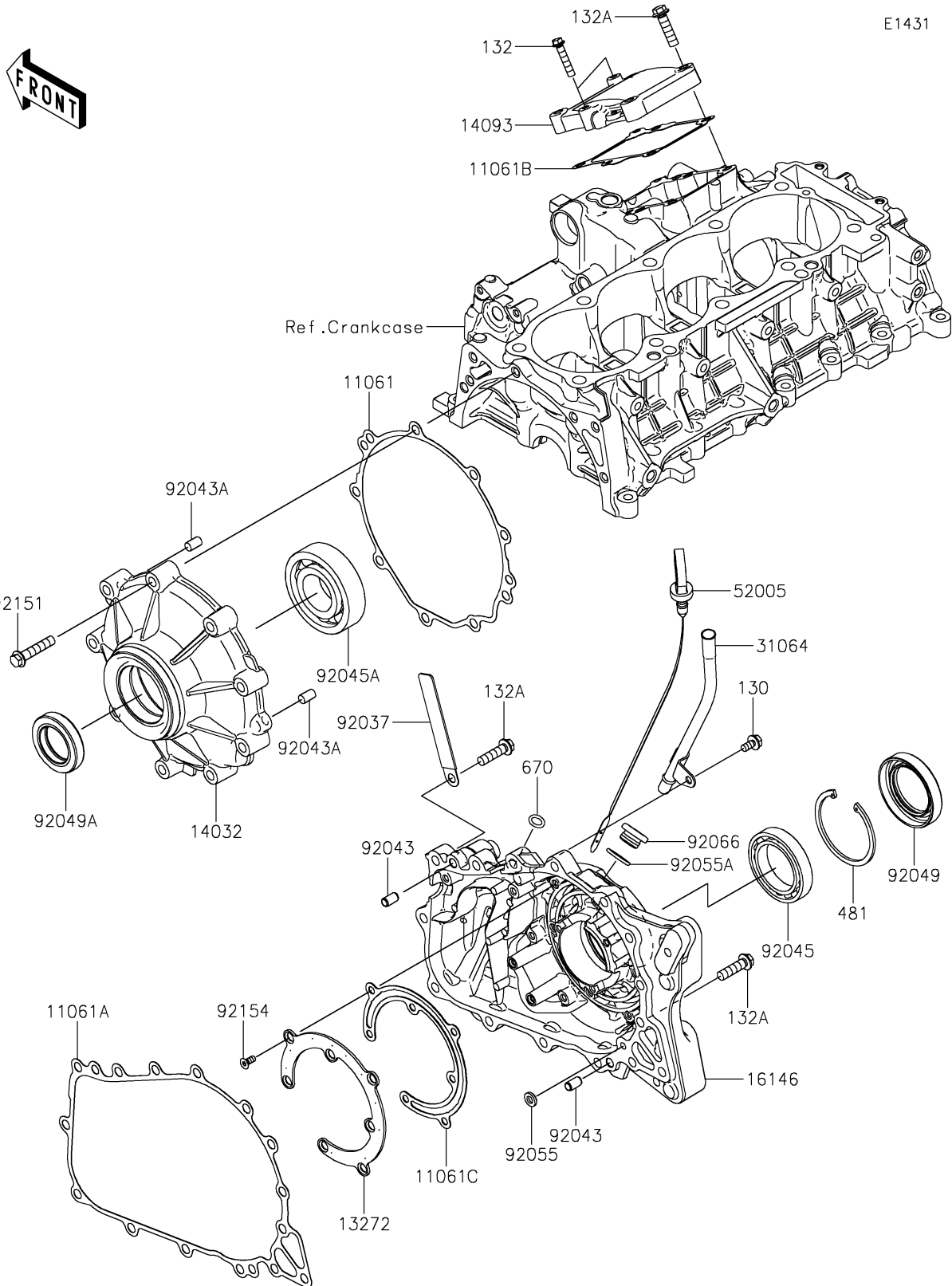


2026 RIDGE CREW

PARTS DIAGRAM

Engine Cover(s)



2026 RIDGE CREW

PARTS LIST

Engine Cover(s)

ITEM NAME	PART NUMBER	QUANTITY
GASKET,CLUTCH COVER (Ref # 11061)	11061-1451	1
GASKET,CRANKCASE COVER (Ref # 11061A)	11061-1454	1
GASKET (Ref # 11061B)	11061-1456	1
GASKET,GENERATOR COVER (Ref # 11061C)	11061-1483	1
PLATE,GENERATOR (Ref # 13272)	13272-4093	1
COVER-CLUTCH (Ref # 14032)	14032-0707	1
COVER (Ref # 14093)	14093-1359	1
COVER-ASSY,GENERATOR (Ref # 16146)	16146-0900	1
PIPE-COMP (Ref # 31064)	31064-0799	1
GAUGE,OIL (Ref # 52005)	52005-0799	1
CLAMP,HARNESS,L=100 (Ref # 92037)	92037-1636	1
PIN,6.2X8X14 (Ref # 92043)	92043-1263	2
PIN,8X14 (Ref # 92043A)	92043-1567	2
BEARING-BALL,6909C3 (Ref # 92045)	92045-0968	1
BEARING-BALL,2TS2-6307UC3 (Ref # 92045A)	92045-0969	1
SEAL-OIL (Ref # 92049)	92049-0867	1
SEAL-OIL (Ref # 92049A)	92049-0868	1
RING-O,OD=13 (Ref # 92055)	92055-074	1
RING-O,20X2 (Ref # 92055A)	92055-1146	1
PLUG,COVER (Ref # 92066)	92066-0011	1
BOLT,8X40 (Ref # 92151)	92151-1621	9
BOLT,5X12 (Ref # 92154)	92154-4490	7
BOLT-FLANGED,6X12 (Ref # 130)	130BA0612	1
BOLT-FLANGED-SMALL,6X30 (Ref # 132)	132BA0630	2
BOLT-FLANGED-SMALL,8X30 (Ref # 132A)	132BA0830	19
CIRCLIP-TYPE-C,68MM (Ref # 481)	481J6800	1
O RING,10MM (Ref # 670)	670D2010	1