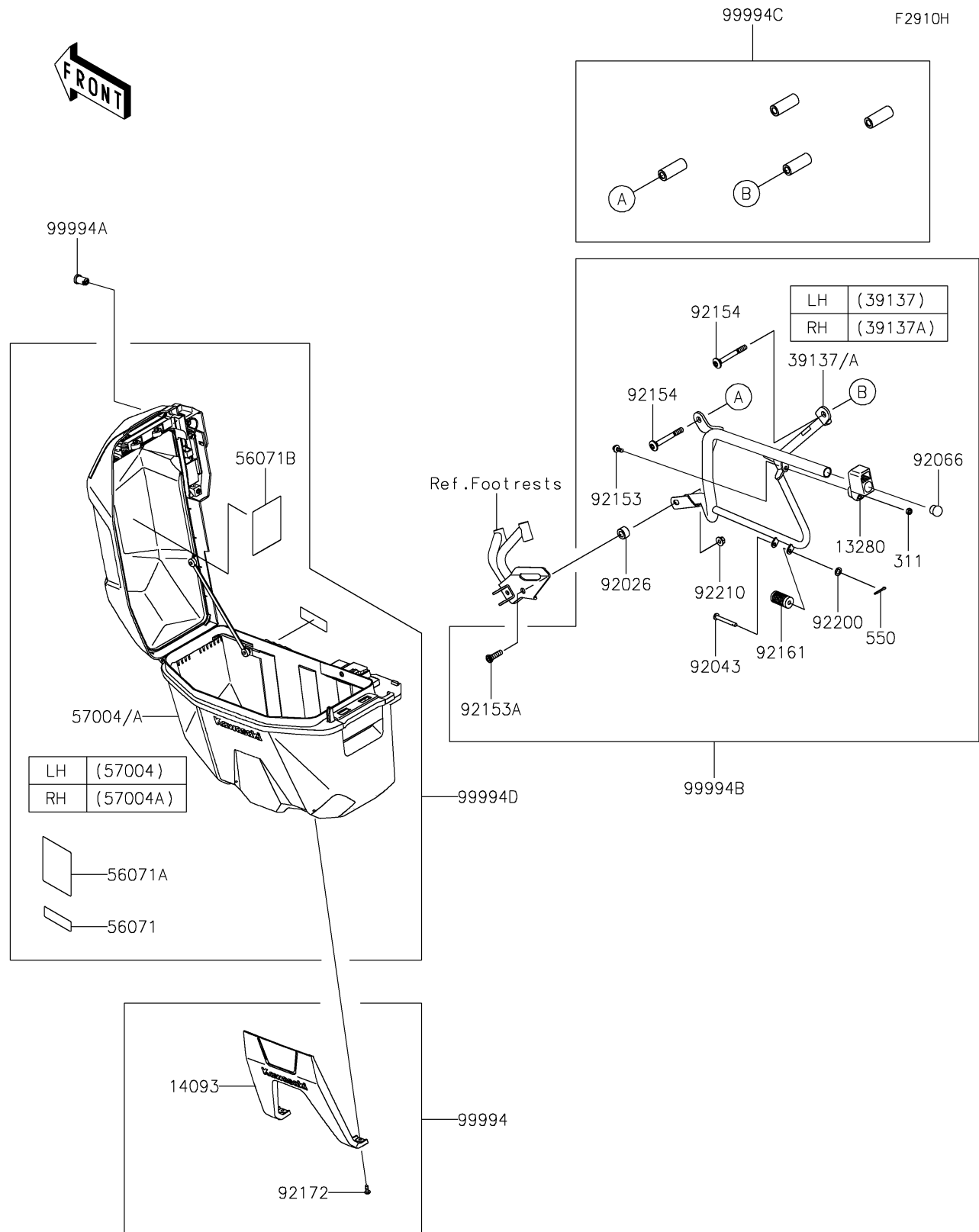


2026 KLE[®] 500 ABS

PARTS DIAGRAM

Accessory(Pannier Case)



2026 KLE® 500 ABS

PARTS LIST

Accessory(Pannier Case)

ITEM NAME	PART NUMBER	QUANTITY
HOLDER,PANNIER (Ref # 13280)	13280-1314	2
COVER,PANNIER,B.B.SILVER (Ref # 14093)	14093-1068-63E	2
STAY-COMP,LH (Ref # 39137)	39137-0774	1
STAY-COMP,RH (Ref # 39137A)	39137-0775	1
LABEL-WARNING,PICTOGRAM (Ref # 56071)	56071-0457	2
LABEL-WARNING,PICTOGRAM (Ref # 56071A)	56071-1527	2
LABEL-WARNING,MAX LOAD (Ref # 56071B)	56071-1531	2
BAG-ASSY,PANNIER,LH (Ref # 57004)	57004-0026	1
BAG-ASSY,PANNIER,RH (Ref # 57004A)	57004-0027	1
SPACER,10.5X20X12 (Ref # 92026)	92026-0977	2
PIN,6X44.5 (Ref # 92043)	92043-1110	2
PLUG (Ref # 92066)	92066-1484	2
BOLT,FLANGED,6X14 (Ref # 92153)	92153-1571	2
BOLT,SOCKET,8X30 (Ref # 92153A)	92153-1624	2
BOLT,SOCKET,8X73 (Ref # 92154)	92154-2339	4
DAMPER (Ref # 92161)	92161-2401	2
SCREW,SOCKET,5X14 (Ref # 92172)	92172-0823	4
WASHER,6.2X10X1 (Ref # 92200)	92200-1465	2
NUT,FLANGED,8MM (Ref # 92210)	92210-0304	2
PANEL-SIDECASES,B.B.SILVER (Ref # 99994)	99994-1491-63E	1
ROTOR(2PC) (Ref # 99994A)	99994-1566	1
PANNIER STAY (Ref # 99994B)	99994-2273	1
COLLAR (Ref # 99994C)	99994-2274	1
CASE ASSY (Ref # 99994D)	99994-2548	1
NUT-HEX,6MM (Ref # 311)	311BA0600	2
PIN-COTTER,2.0X15 (Ref # 550)	550AA2015	2