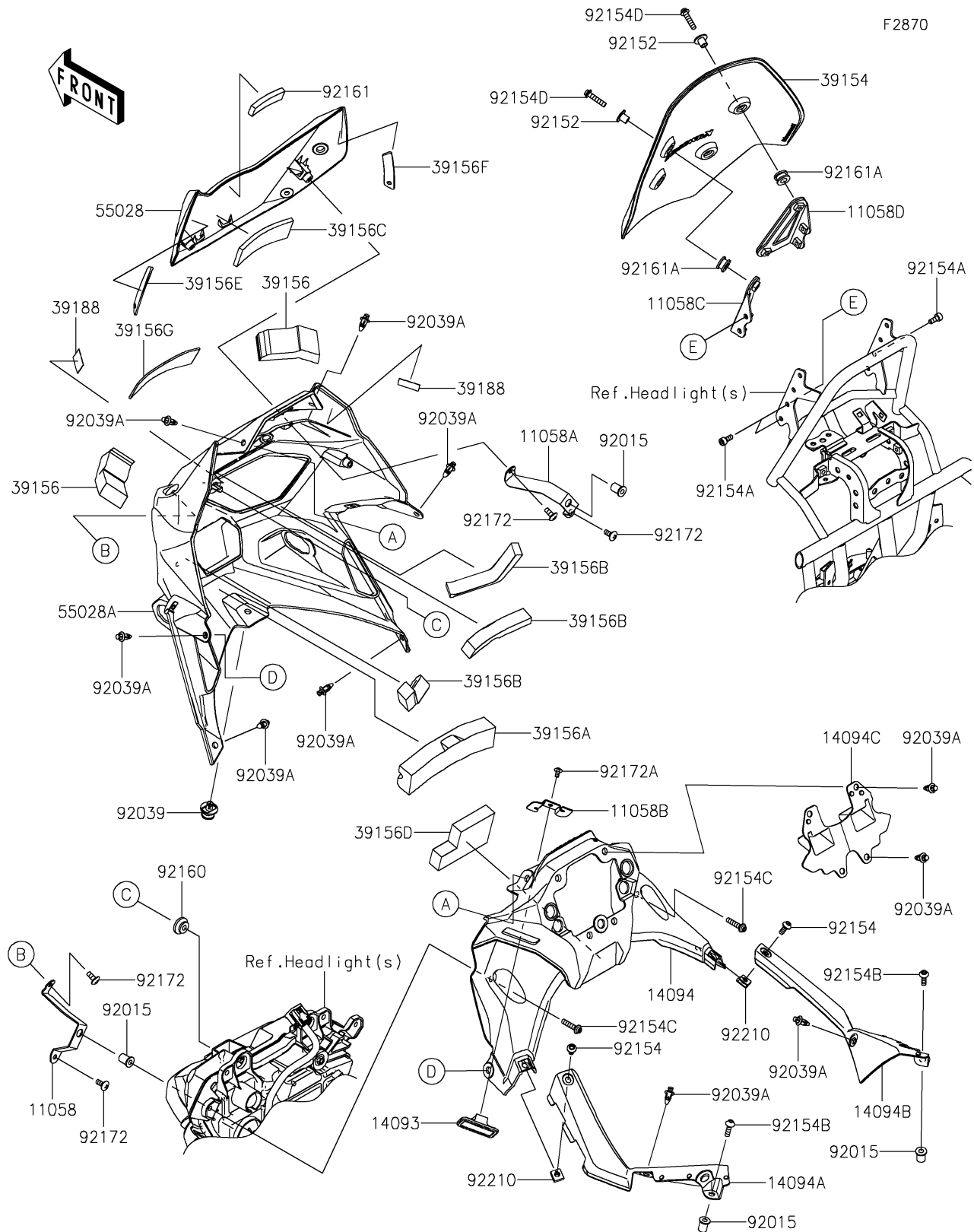


2026 KLE® 500 ABS

PARTS DIAGRAM

Cowling(Upper)



2026 KLE® 500 ABS

PARTS LIST

Cowling(Upper)

ITEM NAME	PART NUMBER	QUANTITY
BRACKET,UPP COWLING,LH (Ref # 11058)	11058-2818	1
BRACKET,UPP COWLING,RH (Ref # 11058A)	11058-2819	1
BRACKET,USB (Ref # 11058B)	11058-2912	1
BRACKET,WINDSHIELD,LH (Ref # 11058C)	11058-7874	1
BRACKET,WINDSHIELD,RH (Ref # 11058D)	11058-7875	1
COVER,INNER (Ref # 14093)	14093-1550	1
COVER,INNER,CNT (Ref # 14094)	14094-0316	1
COVER,INNER,SIDE,LH (Ref # 14094A)	14094-0317	1
COVER,INNER,SIDE,RH (Ref # 14094B)	14094-0318	1
COVER,METER (Ref # 14094C)	14094-0539	1
WINDSHIELD (Ref # 39154)	39154-0453	1
PAD,70X20X30 (Ref # 39156)	39156-2992	2
PAD,140X20X30 (Ref # 39156A)	39156-2993	1
PAD,100X15X15 (Ref # 39156B)	39156-2994	3
PAD,85X30X5 (Ref # 39156C)	39156-3876	1
PAD,METER (Ref # 39156D)	39156-3888	1
PAD,UPP COWLING,LH (Ref # 39156E)	39156-3894	1
PAD,UPP COWLING,RH (Ref # 39156F)	39156-3895	1
PAD,100X30X2 (Ref # 39156G)	39156-3897	1
TAPE,15X25 (Ref # 39188)	39188-0045	2
COWLING,H/L UPP,M.C.GRAY (Ref # 55028)	55028-0910-51A	1
COWLING,UPP (Ref # 55028A)	55028-0962	1
NUT,WELL,5MM (Ref # 92015)	92015-1757	4
RIVET,HOLE 8MM (Ref # 92039)	92039-0014	1
RIVET (Ref # 92039A)	92039-0709	12
COLLAR (Ref # 92152)	92152-1592	4
BOLT,SOCKET,5X12 (Ref # 92154)	92154-0917	2
BOLT-SOCKET,5X12 (Ref # 92154A)	92154-4291	4
BOLT,SOCKET,5X16 (Ref # 92154B)	92154-4294	2

2026 KLE[®] 500 ABS

PARTS LIST

Cowling(Upper)

ITEM NAME	PART NUMBER	QUANTITY
BOLT,FLANGED,5X23 (Ref # 92154C)	92154-7670	2
BOLT,FLANGED,5X23 (Ref # 92154D)	92154-7945	4
DAMPER (Ref # 92160)	92160-1613	1
DAMPER,15X50X6 (Ref # 92161)	92161-0905	1
DAMPER (Ref # 92161A)	92161-2832	4
SCREW,5X12 (Ref # 92172)	92172-0821	4
SCREW,CROSS,4X8 (Ref # 92172A)	92172-1227	1
NUT (Ref # 92210)	92210-0571	2