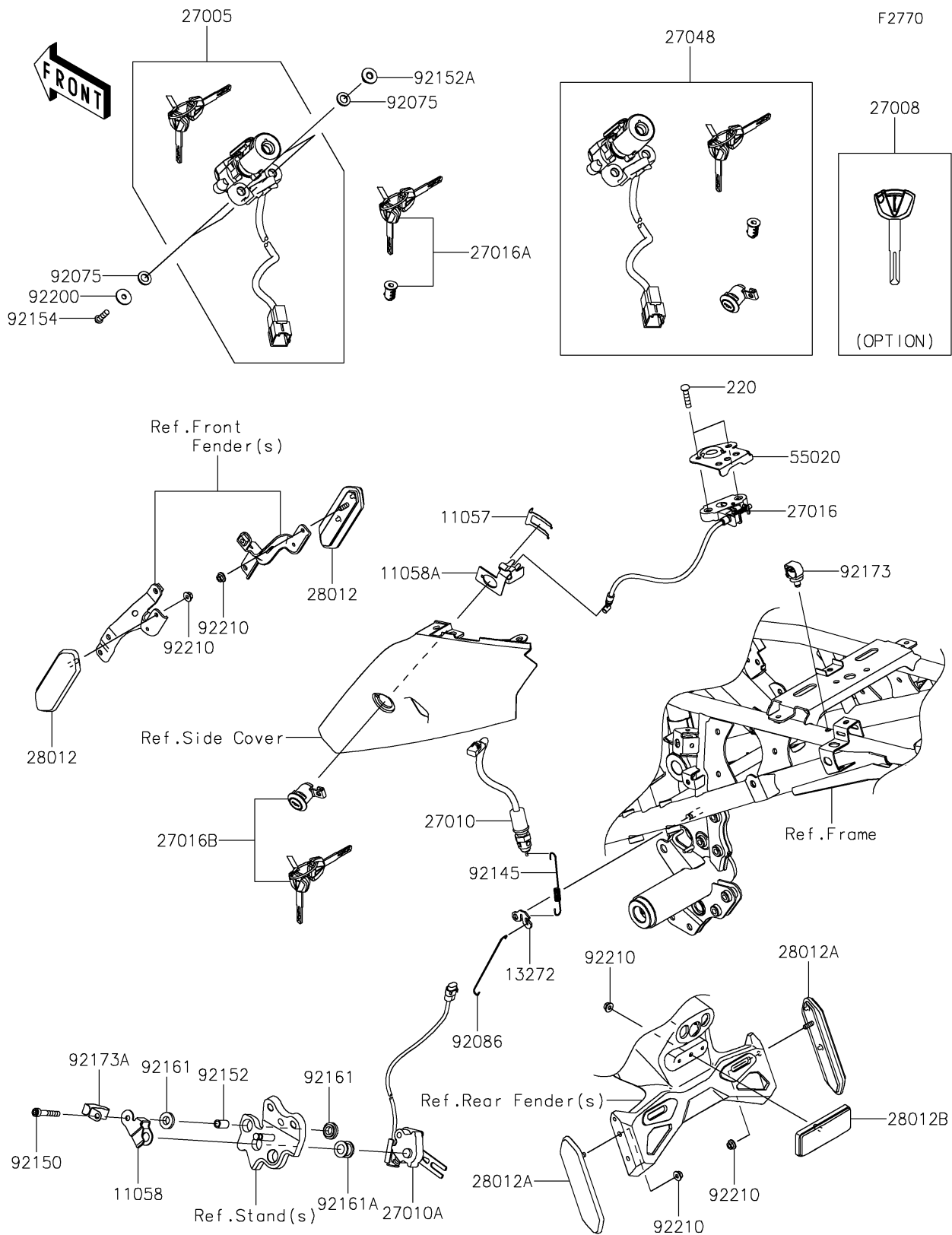


# 2026 KLE<sup>®</sup> 500 ABS

## PARTS DIAGRAM

### Ignition Switch



# 2026 KLE® 500 ABS

## PARTS LIST

### Ignition Switch

ITEM NAME	PART NUMBER	QUANTITY
BRACKET,SEAT LOCK,UPP (Ref # 11057)	11057-7740	1
BRACKET (Ref # 11058)	11058-1673	1
BRACKET,KEY CYLINDER (Ref # 11058A)	11058-4418	1
PLATE,RR BRAKE SWITCH (Ref # 13272)	13272-7152	1
SWITCH-ASSY-IGNITION (Ref # 27005)	27005-0718	1
KEY-LOCK,BLANK (Ref # 27008)	27008-0662	1
SWITCH,REAR BRAKE (Ref # 27010)	27010-0723	1
SWITCH,SIDE STAND (Ref # 27010A)	27010-0845	1
LOCK-ASSY,SEAT STRIKER (Ref # 27016)	27016-0107	1
LOCK-ASSY,SEAT (Ref # 27016A)	27016-5427	1
LOCK-ASSY,TANK CAP (Ref # 27016B)	27016-5431	1
SWITCH-ASSY (Ref # 27048)	27048-5360	1
REFLECTOR-REFLEX,CCC (Ref # 28012)	28012-0045	2
REFLECTOR-REFLEX,RED,CCC (Ref # 28012A)	28012-0046	2
REFLECTOR-REFLEX,RR,FLAP (Ref # 28012B)	28012-0064	1
GUARD (Ref # 55020)	55020-2404	1
DAMPER (Ref # 92075)	92075-1564	4
WIRE,RR BRAKE SWITCH (Ref # 92086)	92086-0044	1
SPRING,BRAKE LAMP SWITCH (Ref # 92145)	92145-0683	1
BOLT,SOCKET,6X40 (Ref # 92150)	92150-1958	1
COLLAR,6.5X9.5X17 (Ref # 92152)	92152-2274	1
COLLAR,6.8X10X10.1 (Ref # 92152A)	92152-4003	2
BOLT,TORX,6X22 (Ref # 92154)	92154-1858	2
DAMPER (Ref # 92161)	92161-0117	2
DAMPER (Ref # 92161A)	92161-0118	1
CLAMP,12MM DIA. (Ref # 92173)	92173-0736	1
CLAMP (Ref # 92173A)	92173-2721	1
WASHER,6X20X1.6 (Ref # 92200)	92200-0780	2
NUT,FLANGED,5MM (Ref # 92210)	92210-0007	5

# 2026 KLE<sup>®</sup> 500 ABS

## PARTS LIST

### Ignition Switch

ITEM NAME	PART NUMBER	QUANTITY
SCREW-PAN-CROS,6X25 (Ref # 220)	220AA0625	2