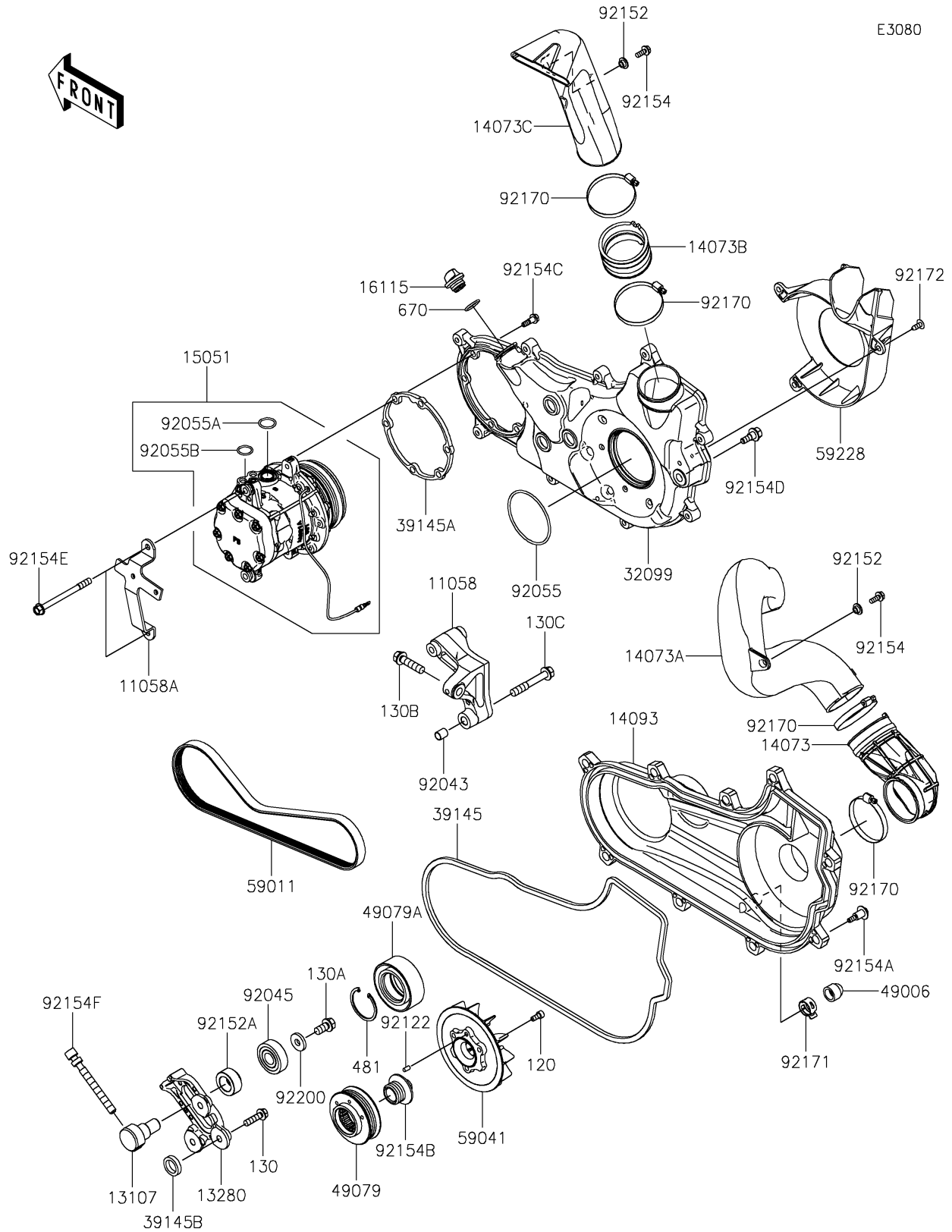


2026 RIDGE HVAC

PARTS DIAGRAM

Compressor



2026 RIDGE HVAC

PARTS LIST

Compressor

| ITEM NAME | PART NUMBER | QUANTITY |
|--|-------------|----------|
| BRACKET,COMPRESSOR MOUNT (Ref # 11058) | 11058-0314 | 1 |
| BRACKET,HOSE (Ref # 11058A) | 11058-0315 | 1 |
| SHAFT (Ref # 13107) | 13107-0976 | 1 |
| HOLDER (Ref # 13280) | 13280-1349 | 1 |
| DUCT,JOINT INTAKE (Ref # 14073) | 14073-1896 | 1 |
| DUCT,INTAKE (Ref # 14073A) | 14073-1897 | 1 |
| DUCT,JOINT EXHAUST (Ref # 14073B) | 14073-1898 | 1 |
| DUCT,EXHAUST (Ref # 14073C) | 14073-1899 | 1 |
| COVER,FAN (Ref # 14093) | 14093-1388 | 1 |
| COMPRESSOR-AIR (Ref # 15051) | 15051-0003 | 1 |
| CAP-OIL FILLER (Ref # 16115) | 16115-1053 | 1 |
| CASE,FAN (Ref # 32099) | 32099-0826 | 1 |
| TRIM-SEAL (Ref # 39145) | 39145-0751 | 1 |
| TRIM-SEAL (Ref # 39145A) | 39145-0752 | 1 |
| TRIM-SEAL (Ref # 39145B) | 39145-0789 | 3 |
| BOOT,DRAIN (Ref # 49006) | 49006-0560 | 1 |
| PULLEY-BELT (Ref # 49079) | 49079-0030 | 1 |
| PULLEY-BELT (Ref # 49079A) | 49079-0032 | 1 |
| BELT,COMPRESSOR (Ref # 59011) | 59011-0058 | 1 |
| FAN (Ref # 59041) | 59041-0036 | 1 |
| LOUVER (Ref # 59228) | 59228-0004 | 1 |
| PIN,10.1X12X14 (Ref # 92043) | 92043-4009 | 1 |
| BEARING-BALL,17X47X14 (Ref # 92045) | 92045-3742 | 1 |
| RING-O,77.1X3.1 (Ref # 92055) | 92055-1740 | 1 |
| RING-O (Ref # 92055A) | 92055-1780 | 1 |
| RING-O (Ref # 92055B) | 92055-1781 | 1 |
| ROLLER (Ref # 92122) | 92122-0569 | 1 |
| COLLAR,6.5X10X5.6 (Ref # 92152) | 92152-0445 | 2 |
| COLLAR (Ref # 92152A) | 92152-2927 | 1 |

2026 RIDGE HVAC

PARTS LIST

Compressor

| ITEM NAME | PART NUMBER | QUANTITY |
|------------------------------------|-------------|----------|
| BOLT,FLANGED,6X16 (Ref # 92154) | 92154-0887 | 2 |
| BOLT,CVT COVER (Ref # 92154A) | 92154-1522 | 9 |
| BOLT,PULLEY (Ref # 92154B) | 92154-7011 | 1 |
| BOLT,FAN CASE (Ref # 92154C) | 92154-7012 | 6 |
| BOLT,FAN CASE (Ref # 92154D) | 92154-7013 | 1 |
| BOLT,8X97 (Ref # 92154E) | 92154-7014 | 2 |
| BOLT,TENSION ADJUST (Ref # 92154F) | 92154-7114 | 1 |
| CLAMP (Ref # 92170) | 92170-1764 | 4 |
| CLAMP (Ref # 92171) | 92171-0329 | 1 |
| SCREW,6X16 (Ref # 92172) | 92172-0284 | 3 |
| WASHER,10.5X26X4 (Ref # 92200) | 92200-3798 | 1 |
| BOLT-SOCKET,6X14 (Ref # 120) | 120CA0614 | 3 |
| BOLT-FLANGED,8X30 (Ref # 130) | 130BA0830 | 3 |
| BOLT-FLANGED,10X20 (Ref # 130A) | 130BA1020 | 1 |
| BOLT-FLANGED,10X40 (Ref # 130B) | 130CA1040 | 1 |
| BOLT-FLANGED,10X65 (Ref # 130C) | 130CA1065 | 1 |
| CIRCLIP-TYPE-C,47MM (Ref # 481) | 481J4700 | 1 |
| O RING,20MM (Ref # 670) | 670B2020 | 1 |