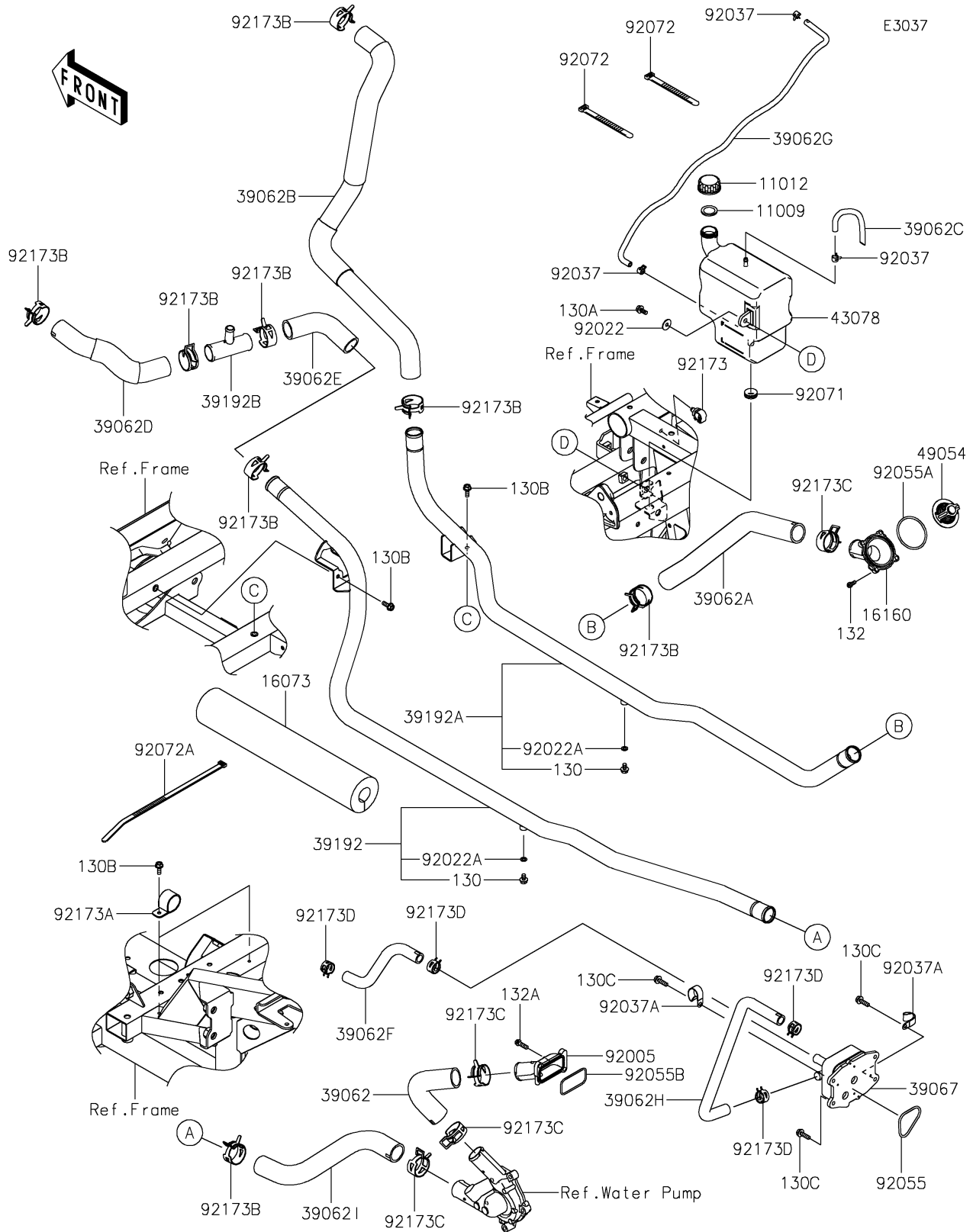


2026 RIDGE® HVAC CAMO

PARTS DIAGRAM

Water Pipe



2026 RIDGE® HVAC CAMO

PARTS LIST

Water Pipe

ITEM NAME	PART NUMBER	QUANTITY
GASKET,RESERVOIR TANK CAP (Ref # 11009)	11009-1145	1
CAP (Ref # 11012)	11012-1084	1
INSULATOR (Ref # 16073)	16073-0974	1
BODY,THERMOSTAT (Ref # 16160)	16160-0835	1
HOSE-COOLING,W/PUMP-FITTING (Ref # 39062)	39062-0953	1
HOSE-COOLING,ENGINE-PIPE RH (Ref # 39062A)	39062-0954	1
HOSE-COOLING,PIPE RH-RADIATOR (Ref # 39062B)	39062-0958	1
HOSE-COOLING,OVER FLOW (Ref # 39062C)	39062-0959	1
HOSE-COOLING,RADIATOR-FITTING (Ref # 39062D)	39062-0964	1
HOSE-COOLING,FITTING-PIPE LH (Ref # 39062E)	39062-0965	1
HOSE-COOLING,O/C-PIPE (Ref # 39062F)	39062-0966	1
HOSE-COOLING,RAD-RESERVOIR (Ref # 39062G)	39062-0969	1
HOSE-COOLING,HEAD-OIL COOLER (Ref # 39062H)	39062-0972	1
HOSE-COOLING,PIPE(L/H WATER) (Ref # 39062I)	39062-1996	1
COOLER-OIL (Ref # 39067)	39067-0023	1
PIPE-WATER,LH (Ref # 39192)	39192-0703	1
PIPE-WATER,RH (Ref # 39192A)	39192-0704	1
PIPE-WATER (Ref # 39192B)	39192-0707	1
RESERVOIR (Ref # 43078)	43078-0617	1
THERMOSTAT (Ref # 49054)	49054-0014	1
FITTING (Ref # 92005)	92005-1443	1
WASHER,PLAIN,6.5X20X1 (Ref # 92022)	92022-165	1
WASHER,6.2X11X1 (Ref # 92022A)	92022-304	2
CLAMP,TUBE (Ref # 92037)	92037-1461	3
CLAMP (Ref # 92037A)	92037-1993	2
RING-O,46.4X3.1 (Ref # 92055)	92055-0752	1
RING-O,53.5X2.6 (Ref # 92055A)	92055-0831	1
RING-O,FITTING (Ref # 92055B)	92055-0923	1
GROMMET (Ref # 92071)	92071-1115	1

2026 RIDGE® HVAC CAMO

PARTS LIST

Water Pipe

ITEM NAME	PART NUMBER	QUANTITY
BAND,L=123 (Ref # 92072)	92072-030	2
BAND,L=292.1 (Ref # 92072A)	92072-3509	5
CLAMP,12MM DIA. (Ref # 92173)	92173-0736	1
CLAMP (Ref # 92173A)	92173-1204	2
CLAMP,28.6MM (Ref # 92173B)	92173-1205	8
CLAMP,33.4MM (Ref # 92173C)	92173-1981	4
CLAMP (Ref # 92173D)	92173-2285	4
BOLT-FLANGED,6X10 (Ref # 130)	130BA0610	2
BOLT-FLANGED,6X14 (Ref # 130A)	130BA0614	1
BOLT-FLANGED,6X16 (Ref # 130B)	130BA0616	4
BOLT-FLANGED,6X20 (Ref # 130C)	130CA0620	4
BOLT-FLANGED-SMALL,5X16 (Ref # 132)	132BA0516	4
BOLT-FLANGED-SMALL,6X20 (Ref # 132A)	132BA0620	2