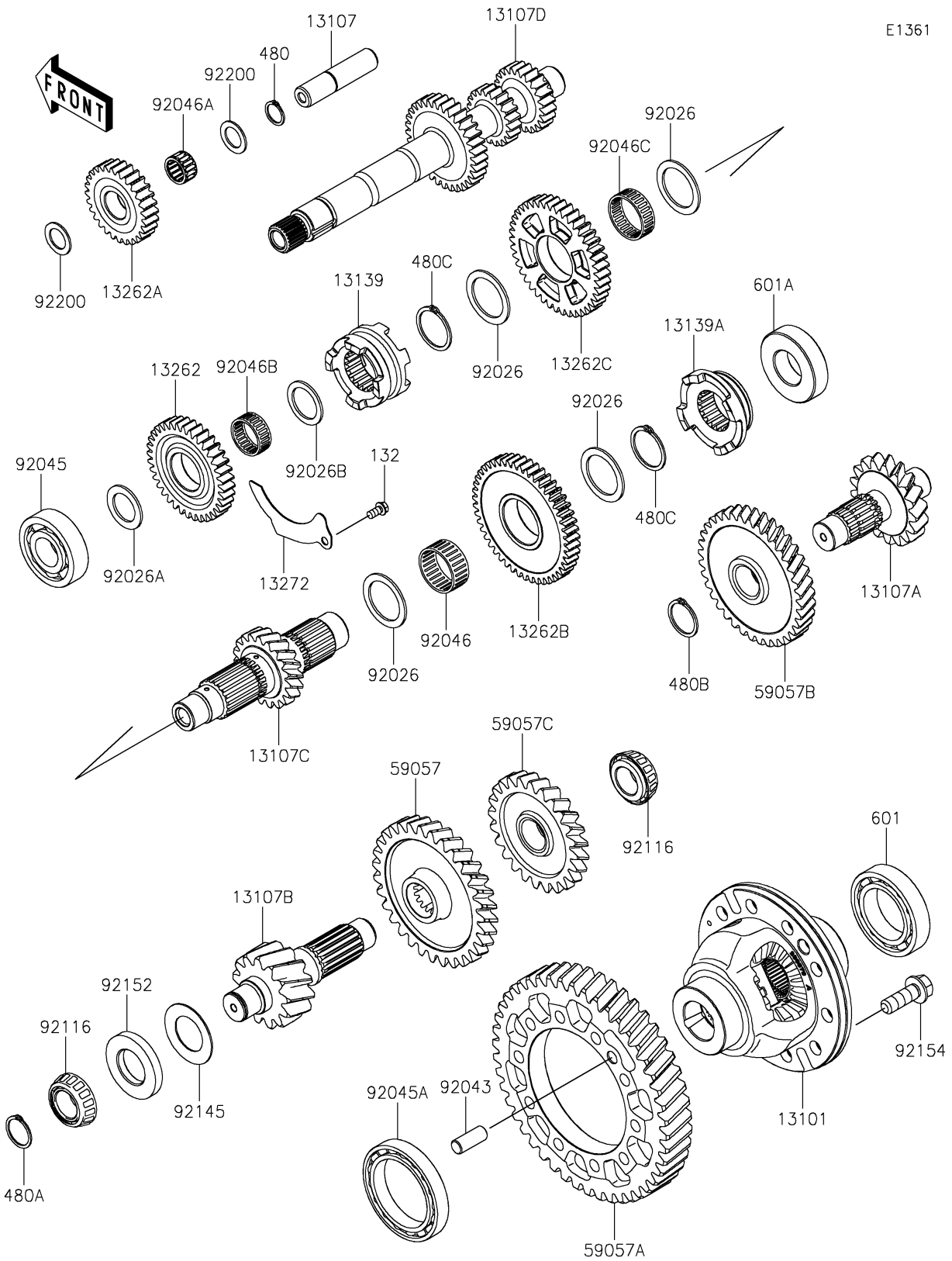


2026 RIDGE HVAC Camo

PARTS DIAGRAM

Transmission



E1361

2026 RIDGE HVAC Camo

PARTS LIST

Transmission

ITEM NAME	PART NUMBER	QUANTITY
GEAR-ASSY,DIFFERENTIAL (Ref # 13101)	13101-0735	1
SHAFT,REVERSE IDLER (Ref # 13107)	13107-0879	1
SHAFT,3RD,17T (Ref # 13107A)	13107-0965	1
SHAFT,4TH,13T (Ref # 13107B)	13107-0967	1
SHAFT,2ND,19T (Ref # 13107C)	13107-0974	1
SHAFT,INPUT (Ref # 13107D)	13107-1586	1
SHIFTER,HIGH&REV,19T (Ref # 13139)	13139-0037	1
SHIFTER,LOW,19T (Ref # 13139A)	13139-0042	1
GEAR,HIGH,36T (Ref # 13262)	13262-1655	1
GEAR-TRANSMISSION SPUR,REV,28T (Ref # 13262A)	13262-1703	1
GEAR-TRANSMISSION SPUR,LOW,47T (Ref # 13262B)	13262-1705	1
GEAR-TRANSMISSION SPUR,REV,42T (Ref # 13262C)	13262-1706	1
PLATE,OIL (Ref # 13272)	13272-2570	1
GEAR-HELICAL,31T (Ref # 59057)	59057-0039	1
GEAR-HELICAL,46T (Ref # 59057A)	59057-0040	1
GEAR-HELICAL,36T (Ref # 59057B)	59057-0042	1
GEAR-HELICAL,24T (Ref # 59057C)	59057-0046	1
SPACER,35.2X47X2 (Ref # 92026)	92026-0765	4
SPACER,25.2X38X2 (Ref # 92026A)	92026-0856	1
SPACER,28X38X2 (Ref # 92026B)	92026-1299	1
PIN,DOWEL,12X30 (Ref # 92043)	92043-0789	1
BEARING-BALL,6305RSH2 (Ref # 92045)	92045-0899	1
BEARING-BALL,6912 (Ref # 92045A)	92045-0965	1
BEARING-NEEDLE,35X40X17 (Ref # 92046)	92046-0611	1
BEARING-NEEDLE (Ref # 92046A)	92046-0634	1
BEARING-NEEDLE (Ref # 92046B)	92046-0635	1
BEARING-NEEDLE (Ref # 92046C)	92046-0636	1
BEARING-ROLLER (Ref # 92116)	92116-1053	2
SPRING (Ref # 92145)	92145-1837	1

2026 RIDGE HVAC Camo

PARTS LIST

Transmission

ITEM NAME	PART NUMBER	QUANTITY
COLLAR (Ref # 92152)	92152-2526	1
BOLT,12X35 (Ref # 92154)	92154-4495	10
WASHER,18.2X28X1.5 (Ref # 92200)	92200-0716	2
BOLT-FLANGED-SMALL,6X12 (Ref # 132)	132BA0612	1
CIRCLIP-TYPE-C,18MM (Ref # 480)	480J1800	1
CIRCLIP-TYPE-C,25MM (Ref # 480A)	480J2500	1
CIRCLIP (Ref # 480B)	480J2900	1
CIRCLIP (Ref # 480C)	480J3500	2
BEARING-BALL,6012 (Ref # 601)	601A6012	1
BEARING-BALL (Ref # 601A)	601A6206	1