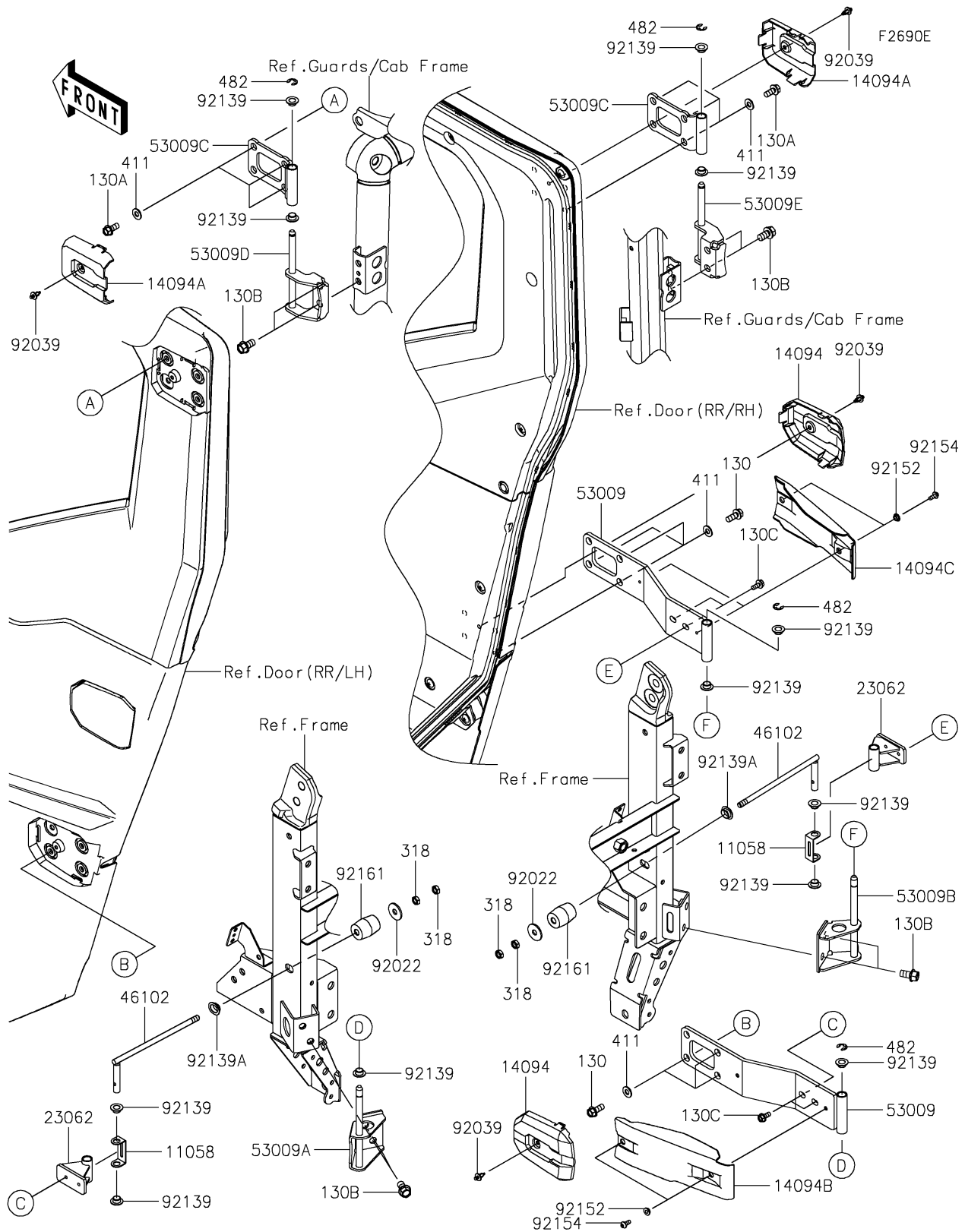


2026 RIDGE CREW Platinum Ranch Edition HVAC

PARTS DIAGRAM Door(RR/Hinge)



2026 RIDGE CREW Platinum Ranch Edition HVAC

PARTS LIST

Door(RR/Hinge)

ITEM NAME	PART NUMBER	QUANTITY
BRACKET,STOPPER (Ref # 11058)	11058-4217	2
COVER,RR DOOR,LWR (Ref # 14094)	14094-0217	2
COVER,RR DOOR,UPP (Ref # 14094A)	14094-0224	2
COVER,RR DOOR,HINGE ARM,LH (Ref # 14094B)	14094-0227	1
COVER,RR DOOR,HINGE ARM,RH (Ref # 14094C)	14094-0228	1
BRACKET-COMP,STOPPER (Ref # 23062)	23062-1554	2
ROD,RR DOOR STOPPER (Ref # 46102)	46102-0692	2
HINGE,RR DOOR,LWR (Ref # 53009)	53009-0328	2
HINGE,RR DOOR,LWR,LH (Ref # 53009A)	53009-0329	1
HINGE,RR DOOR,LWR,RH (Ref # 53009B)	53009-0330	1
HINGE,RR DOOR,UPP (Ref # 53009C)	53009-0332	2
HINGE,RR DOOR,UPP,LH (Ref # 53009D)	53009-0348	1
HINGE,RR DOOR,UPP,RH (Ref # 53009E)	53009-0349	1
WASHER,9X28X2.3 (Ref # 92022)	92022-1632	2
RIVET (Ref # 92039)	92039-0068	4
BUSHING (Ref # 92139)	92139-0230	12
BUSHING (Ref # 92139A)	92139-1289	2
COLLAR (Ref # 92152)	92152-2899	4
BOLT,SOCKET,5X12 (Ref # 92154)	92154-0917	4
DAMPER (Ref # 92161)	92161-2643	2
BOLT-FLANGED,8X20 (Ref # 130)	130BA0820	6
BOLT-FLANGED,8X18 (Ref # 130A)	130BB0818	6
BOLT-FLANGED (Ref # 130B)	130BB1018	8
BOLT-FLANGED,6X14 (Ref # 130C)	130CA0614	4
NUT-HEX-SMALL,8MM (Ref # 318)	318AA0800	4
WASHER-PLAIN,8MM (Ref # 411)	411AA0800	12
CIRCLIP-TYPE-E,8MM (Ref # 482)	482EB8000	4