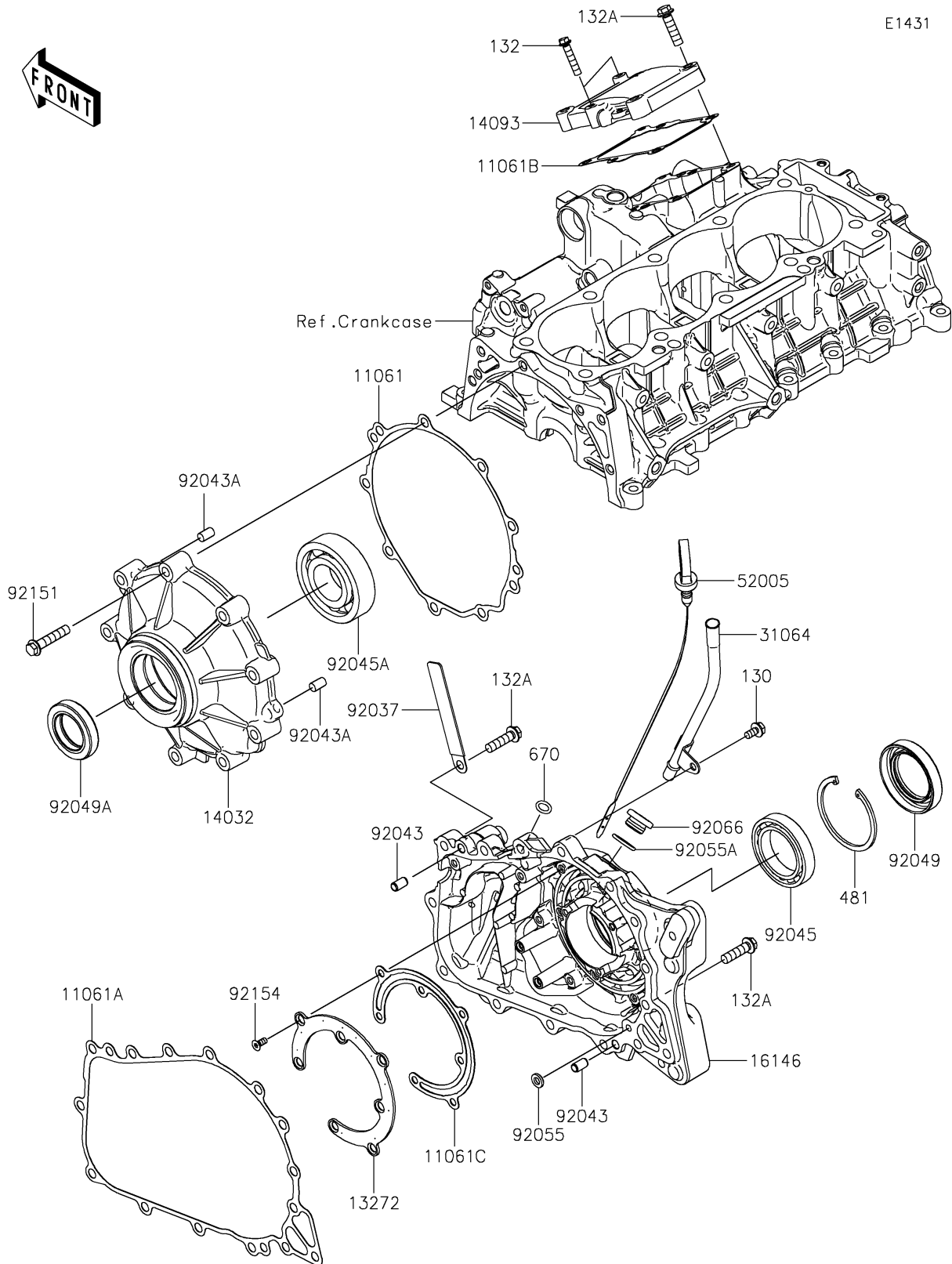


# 2026 RIDGE® CREW PLATINUM RANCH EDITION HVAC

## PARTS DIAGRAM

### Engine Cover(s)



# 2026 RIDGE® CREW PLATINUM RANCH EDITION HVAC

## PARTS LIST

### Engine Cover(s)

| ITEM NAME                                | PART NUMBER | QUANTITY |
|--|-------------|----------|
| GASKET,CLUTCH COVER (Ref # 11061)        | 11061-1451  | 1        |
| GASKET,CRANKCASE COVER (Ref # 11061A)    | 11061-1454  | 1        |
| GASKET (Ref # 11061B)                    | 11061-1456  | 1        |
| GASKET,GENERATOR COVER (Ref # 11061C)    | 11061-1483  | 1        |
| PLATE,GENERATOR (Ref # 13272)            | 13272-4093  | 1        |
| COVER-CLUTCH (Ref # 14032)               | 14032-0707  | 1        |
| COVER (Ref # 14093)                      | 14093-1359  | 1        |
| COVER-ASSY,GENERATOR (Ref # 16146)       | 16146-0900  | 1        |
| PIPE-COMP (Ref # 31064)                  | 31064-0799  | 1        |
| GAUGE,OIL (Ref # 52005)                  | 52005-0799  | 1        |
| CLAMP,HARNESS,L=100 (Ref # 92037)        | 92037-1636  | 1        |
| PIN,6.2X8X14 (Ref # 92043)               | 92043-1263  | 2        |
| PIN,8X14 (Ref # 92043A)                  | 92043-1567  | 2        |
| BEARING-BALL,6909C3 (Ref # 92045)        | 92045-0968  | 1        |
| BEARING-BALL,2TS2-6307UC3 (Ref # 92045A) | 92045-0969  | 1        |
| SEAL-OIL (Ref # 92049)                   | 92049-0867  | 1        |
| SEAL-OIL (Ref # 92049A)                  | 92049-0868  | 1        |
| RING-O,OD=13 (Ref # 92055)               | 92055-074   | 1        |
| RING-O,20X2 (Ref # 92055A)               | 92055-1146  | 1        |
| PLUG,COVER (Ref # 92066)                 | 92066-0011  | 1        |
| BOLT,8X40 (Ref # 92151)                  | 92151-1621  | 9        |
| BOLT,5X12 (Ref # 92154)                  | 92154-4490  | 7        |
| BOLT-FLANGED,6X12 (Ref # 130)            | 130BA0612   | 1        |
| BOLT-FLANGED-SMALL,6X30 (Ref # 132)      | 132BA0630   | 2        |
| BOLT-FLANGED-SMALL,8X30 (Ref # 132A)     | 132BA0830   | 19       |
| CIRCLIP-TYPE-C,68MM (Ref # 481)          | 481J6800    | 1        |
| O RING,10MM (Ref # 670)                  | 670D2010    | 1        |