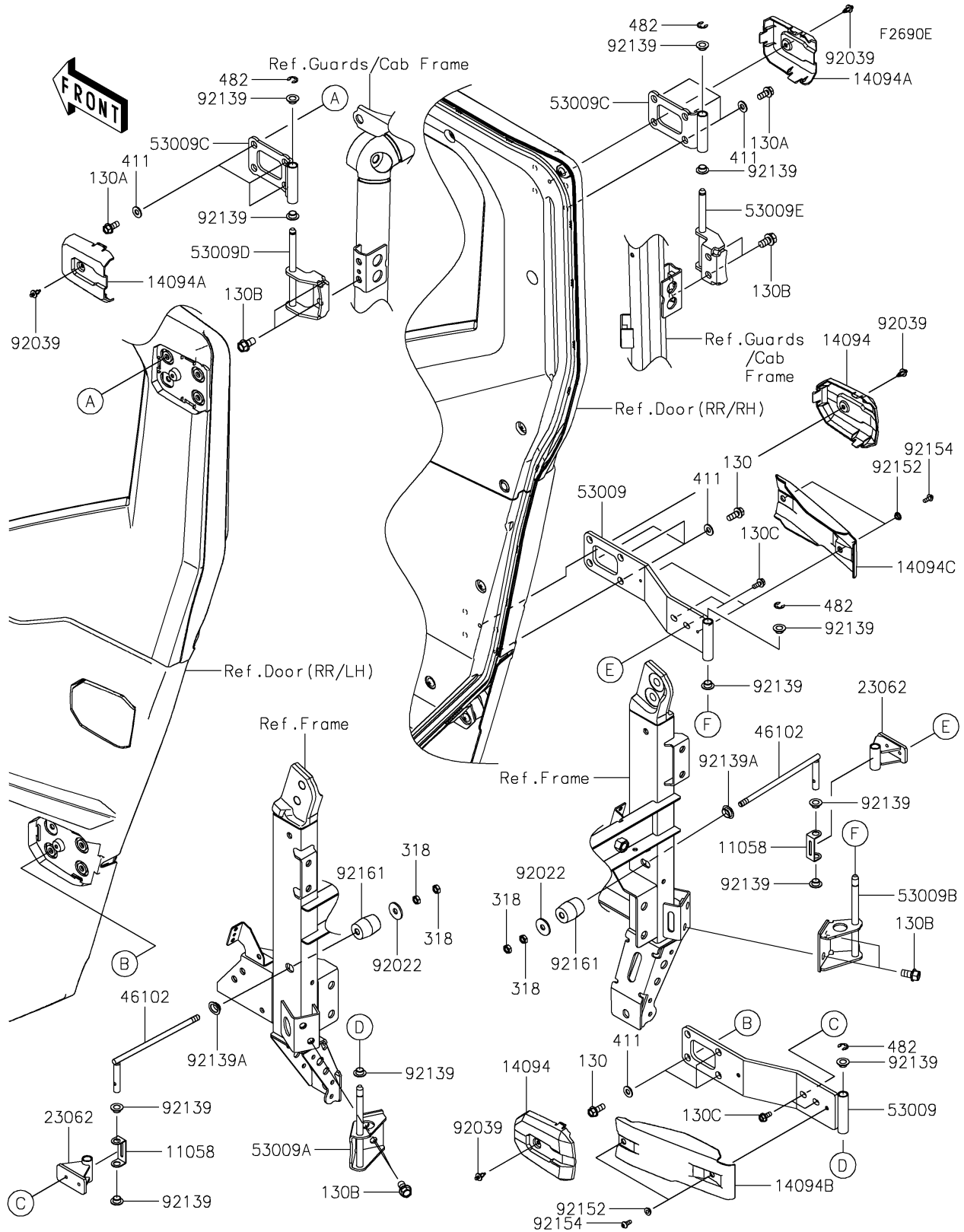


# 2026 RIDGE CREW HVAC Camo

## PARTS DIAGRAM

### Door(RR/Hinge)



# 2026 RIDGE CREW HVAC Camo

## PARTS LIST

### Door(RR/Hinge)

| ITEM NAME                                 | PART NUMBER | QUANTITY |
|---|-------------|----------|
| BRACKET,STOPPER (Ref # 11058)             | 11058-4217  | 2        |
| COVER,RR DOOR,LWR (Ref # 14094)           | 14094-0217  | 2        |
| COVER,RR DOOR,UPP (Ref # 14094A)          | 14094-0224  | 2        |
| COVER,RR DOOR,HINGE ARM,LH (Ref # 14094B) | 14094-0227  | 1        |
| COVER,RR DOOR,HINGE ARM,RH (Ref # 14094C) | 14094-0228  | 1        |
| BRACKET-COMP,STOPPER (Ref # 23062)        | 23062-1554  | 2        |
| ROD,RR DOOR STOPPER (Ref # 46102)         | 46102-0692  | 2        |
| HINGE,RR DOOR,LWR (Ref # 53009)           | 53009-0328  | 2        |
| HINGE,RR DOOR,LWR,LH (Ref # 53009A)       | 53009-0329  | 1        |
| HINGE,RR DOOR,LWR,RH (Ref # 53009B)       | 53009-0330  | 1        |
| HINGE,RR DOOR,UPP (Ref # 53009C)          | 53009-0332  | 2        |
| HINGE,RR DOOR,UPP,LH (Ref # 53009D)       | 53009-0348  | 1        |
| HINGE,RR DOOR,UPP,RH (Ref # 53009E)       | 53009-0349  | 1        |
| WASHER,9X28X2.3 (Ref # 92022)             | 92022-1632  | 2        |
| RIVET (Ref # 92039)                       | 92039-0068  | 4        |
| BUSHING (Ref # 92139)                     | 92139-0230  | 12       |
| BUSHING (Ref # 92139A)                    | 92139-1289  | 2        |
| COLLAR (Ref # 92152)                      | 92152-2899  | 4        |
| BOLT,SOCKET,5X12 (Ref # 92154)            | 92154-0917  | 4        |
| DAMPER (Ref # 92161)                      | 92161-2643  | 2        |
| BOLT-FLANGED,8X20 (Ref # 130)             | 130BA0820   | 6        |
| BOLT-FLANGED,8X18 (Ref # 130A)            | 130BB0818   | 6        |
| BOLT-FLANGED (Ref # 130B)                 | 130BB1018   | 8        |
| BOLT-FLANGED,6X14 (Ref # 130C)            | 130CA0614   | 4        |
| NUT-HEX-SMALL,8MM (Ref # 318)             | 318AA0800   | 4        |
| WASHER-PLAIN,8MM (Ref # 411)              | 411AA0800   | 12       |
| CIRCLIP-TYPE-E,8MM (Ref # 482)            | 482EB8000   | 4        |