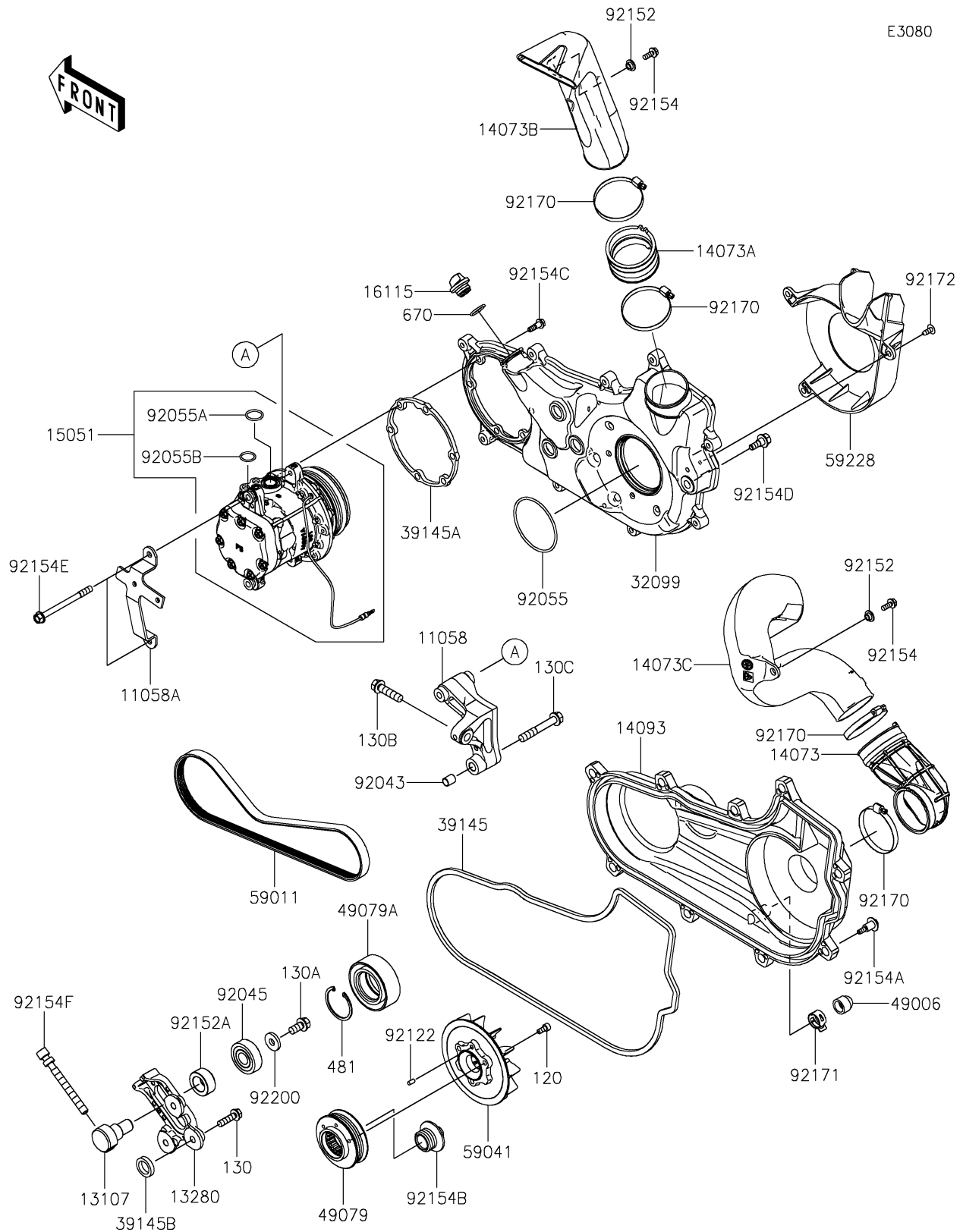


# 2026 RIDGE CREW HVAC

## PARTS DIAGRAM

### Compressor



# 2026 RIDGE CREW HVAC

## PARTS LIST

### Compressor

ITEM NAME	PART NUMBER	QUANTITY
BRACKET,COMPRESSOR MOUNT (Ref # 11058)	11058-0314	1
BRACKET,HOSE (Ref # 11058A)	11058-0315	1
SHAFT (Ref # 13107)	13107-0976	1
HOLDER (Ref # 13280)	13280-1349	1
DUCT,JOINT INTAKE (Ref # 14073)	14073-1896	1
DUCT,JOINT EXHAUST (Ref # 14073A)	14073-1898	1
DUCT,EXHAUST (Ref # 14073B)	14073-1899	1
DUCT,INTAKE (Ref # 14073C)	14073-1994	1
COVER,FAN (Ref # 14093)	14093-1388	1
COMPRESSOR-AIR (Ref # 15051)	15051-0003	1
CAP-OIL FILLER (Ref # 16115)	16115-1053	1
CASE,FAN (Ref # 32099)	32099-0826	1
TRIM-SEAL (Ref # 39145)	39145-0751	1
TRIM-SEAL (Ref # 39145A)	39145-0752	1
TRIM-SEAL (Ref # 39145B)	39145-0789	3
BOOT,DRAIN (Ref # 49006)	49006-0560	1
PULLEY-BELT (Ref # 49079)	49079-0030	1
PULLEY-BELT (Ref # 49079A)	49079-0032	1
BELT,COMPRESSOR (Ref # 59011)	59011-0058	1
FAN (Ref # 59041)	59041-0036	1
LOUVER (Ref # 59228)	59228-0004	1
PIN,10.1X12X14 (Ref # 92043)	92043-4009	1
BEARING-BALL,17X47X14 (Ref # 92045)	92045-3742	1
RING-O,77.1X3.1 (Ref # 92055)	92055-1740	1
RING-O (Ref # 92055A)	92055-1780	1
RING-O (Ref # 92055B)	92055-1781	1
ROLLER (Ref # 92122)	92122-0569	1
COLLAR,6.5X10X5.6 (Ref # 92152)	92152-0445	2
COLLAR (Ref # 92152A)	92152-2927	1

# 2026 RIDGE CREW HVAC

## PARTS LIST

### Compressor

ITEM NAME	PART NUMBER	QUANTITY
BOLT,FLANGED,6X16 (Ref # 92154)	92154-0887	2
BOLT,CVT COVER (Ref # 92154A)	92154-1522	9
BOLT,PULLEY (Ref # 92154B)	92154-7011	1
BOLT,FAN CASE (Ref # 92154C)	92154-7012	6
BOLT,FAN CASE (Ref # 92154D)	92154-7013	1
BOLT,8X97 (Ref # 92154E)	92154-7014	2
BOLT,TENSION ADJUST (Ref # 92154F)	92154-7114	1
CLAMP (Ref # 92170)	92170-1764	4
CLAMP (Ref # 92171)	92171-0329	1
SCREW,6X16 (Ref # 92172)	92172-0284	3
WASHER,10.5X26X4 (Ref # 92200)	92200-3798	1
BOLT-SOCKET,6X14 (Ref # 120)	120CA0614	3
BOLT-FLANGED,8X30 (Ref # 130)	130BA0830	3
BOLT-FLANGED,10X20 (Ref # 130A)	130BA1020	1
BOLT-FLANGED,10X40 (Ref # 130B)	130CA1040	1
BOLT-FLANGED,10X65 (Ref # 130C)	130CA1065	1
CIRCLIP-TYPE-C,47MM (Ref # 481)	481J4700	1
O RING,20MM (Ref # 670)	670B2020	1