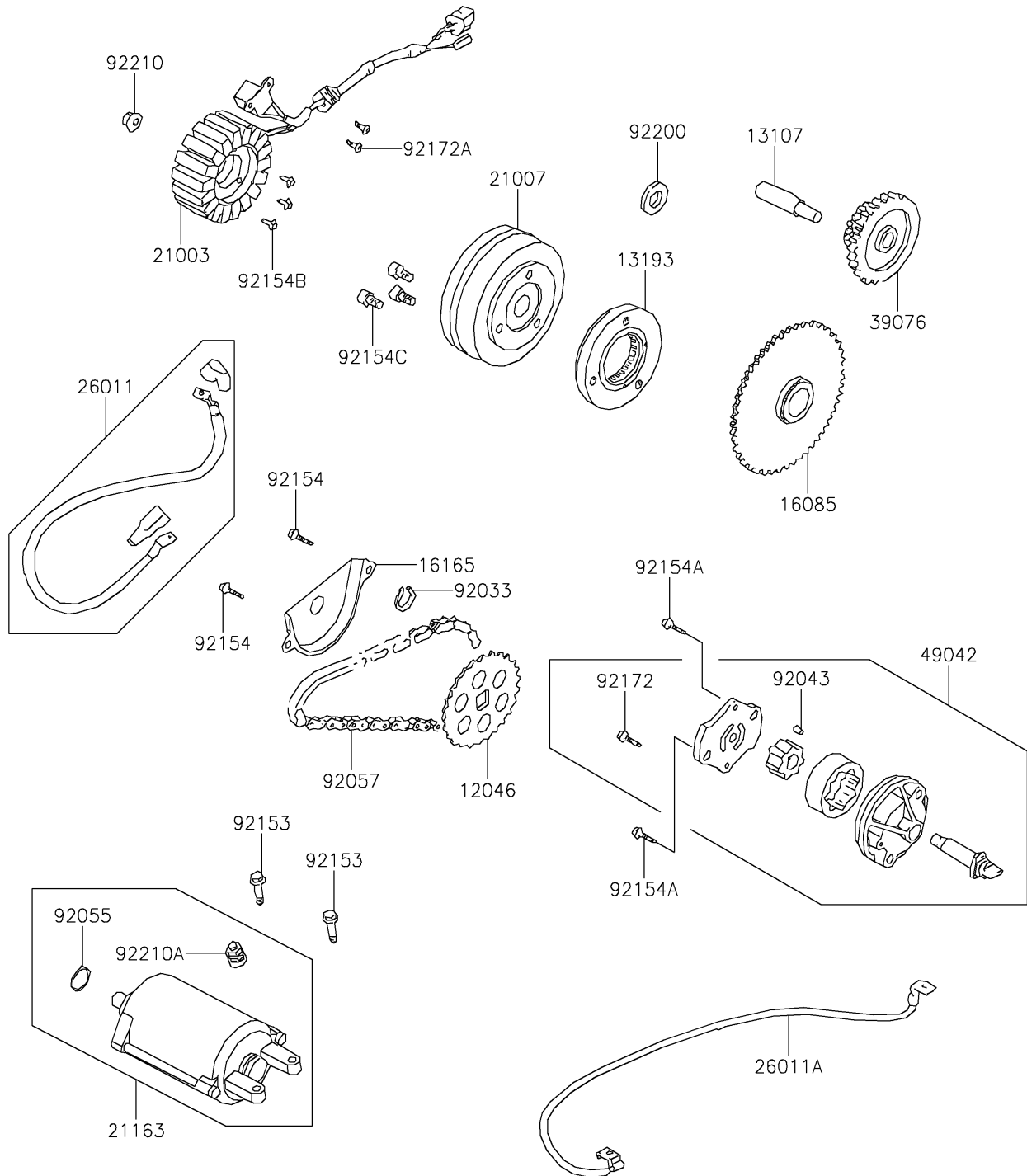


# 2026 BRUTE FORCE® 300

## PARTS DIAGRAM

### Generator

E1810



# 2026 BRUTE FORCE® 300

## PARTS LIST

### Generator

| ITEM NAME                               | PART NUMBER | QUANTITY |
|---|-------------|----------|
| SPROCKET,OIL PUMP DRIVEN (Ref # 12046)  | 12046-Y001  | 1        |
| SHAFT,STARTER REDUCTION (Ref # 13107)   | 13107-Y008  | 1        |
| CLUTCH-ASSY-ONEWAY (Ref # 13193)        | 13193-Y002  | 1        |
| GEAR,STARTER (Ref # 16085)              | 16085-Y009  | 1        |
| SEPARATOR,OIL (Ref # 16165)             | 16165-Y003  | 1        |
| STATOR (Ref # 21003)                    | 21003-Y012  | 1        |
| ROTOR (Ref # 21007)                     | 21007-Y012  | 1        |
| STARTER-ELECTRIC (Ref # 21163)          | 21163-Y003  | 1        |
| WIRE-LEAD,STARTER CABLE (Ref # 26011)   | 26011-Y001  | 1        |
| WIRE-LEAD,EARTH (Ref # 26011A)          | 26011-Y024  | 1        |
| LIMITER,STARTER REDUCTION (Ref # 39076) | 39076-Y002  | 1        |
| PUMP-OIL (Ref # 49042)                  | 49042-Y003  | 1        |
| RING-SNAP,10MM (Ref # 92033)            | 92033-Y019  | 1        |
| PIN,DOWEL,4X65 (Ref # 92043)            | 92043-Y015  | 1        |
| RING-O,24.4X3.1 (Ref # 92055)           | 92055-Y025  | 1        |
| CHAIN,OIL PUMP (Ref # 92057)            | 92057-Y006  | 1        |
| BOLT,FLANGE,6X22 (Ref # 92153)          | 92153-Y003  | 2        |
| BOLT,FLANGE,6X12 (Ref # 92154)          | 92154-Y035  | 2        |
| BOLT,FLANGE,6X28 (Ref # 92154A)         | 92154-Y068  | 2        |
| BOLT,HEX,5X32 (Ref # 92154B)            | 92154-Y112  | 3        |
| BOLT,8X15 (Ref # 92154C)                | 92154-Y123  | 3        |
| SCREW,3X10 (Ref # 92172)                | 92172-Y066  | 1        |
| SCREW,5X16 (Ref # 92172A)               | 92172-Y067  | 2        |
| WASHER,14X28X2 (Ref # 92200)            | 92200-Y026  | 1        |
| NUT,FLANGE,14MM (Ref # 92210)           | 92210-Y038  | 1        |
| NUT,6MM (Ref # 92210A)                  | 92210-Y039  | 1        |