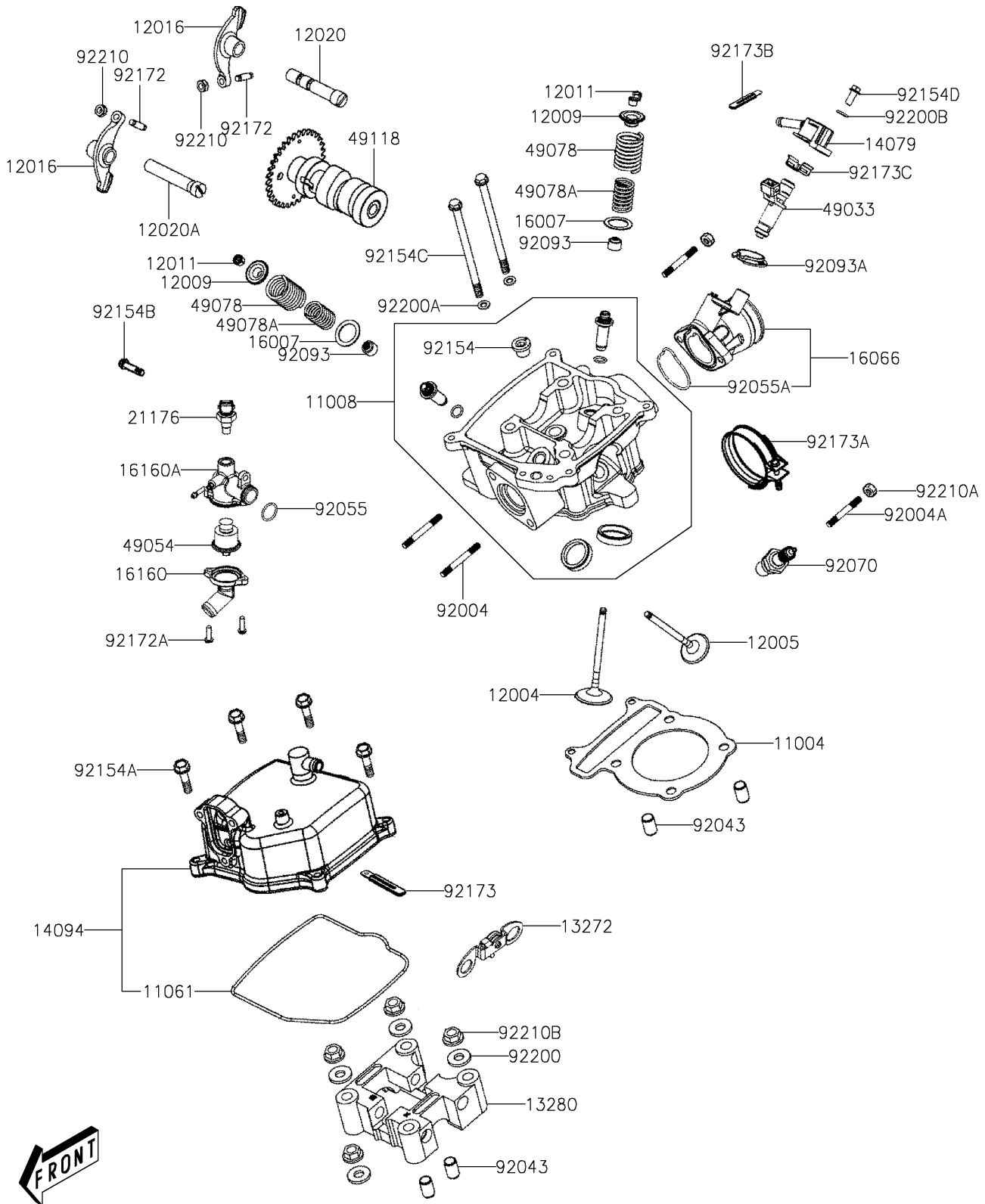


2026 BRUTE FORCE® 300

PARTS DIAGRAM

Cylinder Head

E1111



2026 BRUTE FORCE® 300

PARTS LIST

Cylinder Head

ITEM NAME	PART NUMBER	QUANTITY
GASKET-HEAD (Ref # 11004)	11004-Y003	1
HEAD-COMP-CYLINDER (Ref # 11008)	11008-Y010	1
GASKET,CYLINDER HEAD COVER (Ref # 11061)	11061-Y026	1
VALVE-INTAKE (Ref # 12004)	12004-Y005	1
VALVE-EXHAUST (Ref # 12005)	12005-Y003	1
RETAINER-VALVE SPRING (Ref # 12009)	12009-Y001	2
COLLET (Ref # 12011)	12011-Y001	4
ARM-ROCKER (Ref # 12016)	12016-Y003	2
SHAFT-ROCKER,IN (Ref # 12020)	12020-Y005	1
SHAFT-ROCKER,EX (Ref # 12020A)	12020-Y006	1
PLATE,STOPPER (Ref # 13272)	13272-Y005	1
HOLDER,CAM SHAFT (Ref # 13280)	13280-Y013	1
HOLDER-ASSY,INJECTOR (Ref # 14079)	14079-Y002	1
COVER,CYLINDER HEAD (Ref # 14094)	14094-Y021	1
SEAT-SPRING (Ref # 16007)	16007-Y011	2
HOLDER-THROTTLE BODY (Ref # 16066)	16066-Y001	1
BODY,THERMOSTAT,LWR (Ref # 16160)	16160-Y001	1
BODY,THERMOSTAT,UPP (Ref # 16160A)	16160-Y008	1
SENSOR,WATER TEMP (Ref # 21176)	21176-Y011	1
NOZZLE-INJECTION (Ref # 49033)	49033-Y005	1
THERMOSTAT (Ref # 49054)	49054-Y001	1
SPRING-ENGINE VALVE,OUTER (Ref # 49078)	49078-Y004	2
SPRING-ENGINE VALVE,INNER (Ref # 49078A)	49078-Y005	2
CAMSHAFT-COMP (Ref # 49118)	49118-Y003	1
STUD,8X40 (Ref # 92004)	92004-Y010	2
STUD,6X28 (Ref # 92004A)	92004-Y011	2
PIN,10X16 (Ref # 92043)	92043-Y013	4
RING-O,17.8X1.9 (Ref # 92055)	92055-Y021	1
RING-O,THB HOLDER (Ref # 92055A)	92055-Y091	1

2026 BRUTE FORCE® 300

PARTS LIST

Cylinder Head

ITEM NAME	PART NUMBER	QUANTITY
PLUG-SPARK,DPR 7EA-9(NGK) (Ref # 92070)	92070-Y003	1
SEAL (Ref # 92093)	92093-Y025	2
SEAL,INJECTOR (Ref # 92093A)	92093-Y029	1
BOLT,SEALING,12MM (Ref # 92154)	92154-Y009	1
BOLT,FLANGE,6X25 (Ref # 92154A)	92154-Y130	4
BOLT,FLANGE,6X18 (Ref # 92154B)	92154-Y132	1
BOLT,FLANGE,6X110 (Ref # 92154C)	92154-Y133	2
BOLT,FLANGE,6X14 (Ref # 92154D)	92154-Y158	1
SCREW (Ref # 92172)	92172-Y003	2
SCREW,5X16 (Ref # 92172A)	92172-Y067	2
CLAMP (Ref # 92173)	92173-Y002	1
CLAMP (Ref # 92173A)	92173-Y003	1
CLAMP (Ref # 92173B)	92173-Y004	1
CLAMP,INJECTOR (Ref # 92173C)	92173-Y053	1
WASHER,8MM (Ref # 92200)	92200-Y009	4
WASHER,6MM (Ref # 92200A)	92200-Y024	2
WASHER,6MM (Ref # 92200B)	92200-Y042	1
NUT (Ref # 92210)	92210-Y004	2
NUT,HEX,6MM (Ref # 92210A)	92210-Y074	2
NUT,8MM (Ref # 92210B)	92210-Y076	4