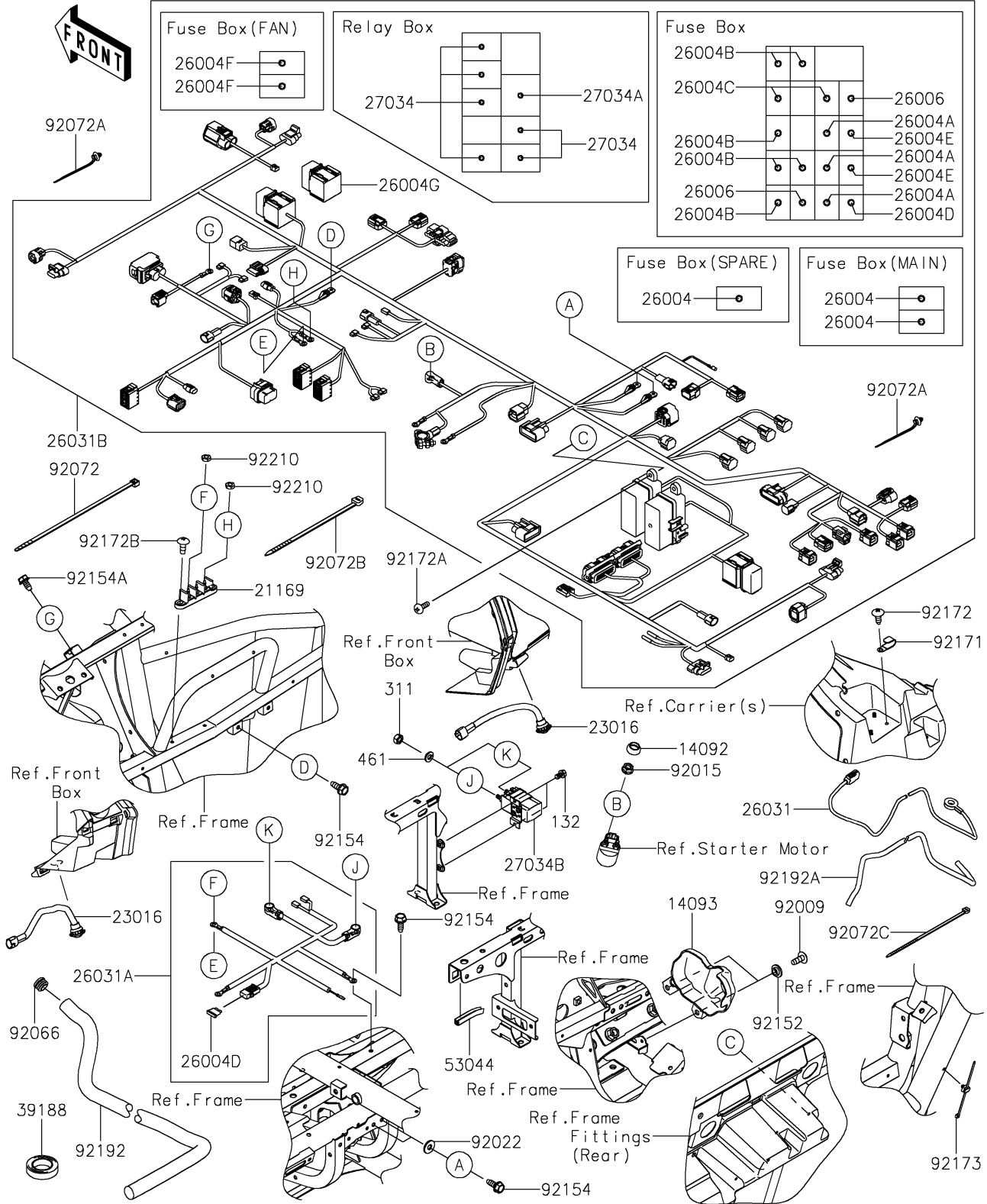


# 2026 Teryx4 H2

## PARTS DIAGRAM

### Chassis Electrical Equipment

F2760



# 2026 Teryx4 H2

## PARTS LIST

### Chassis Electrical Equipment

| ITEM NAME                                 | PART NUMBER | QUANTITY |
|---|-------------|----------|
| COVER,MAGNETIC SW. (Ref # 14092)          | 14092-0851  | 1        |
| COVER,FR GEAR,SIDE (Ref # 14093)          | 14093-0839  | 1        |
| TERMINAL (Ref # 21169)                    | 21169-0571  | 1        |
| LAMP-ASSY,FLOOR (Ref # 23016)             | 23016-0671  | 2        |
| FUSE-ASSY,SLOW-BLOW,70A (Ref # 26004)     | 26004-0030  | 3        |
| FUSE-ASSY,20A (Ref # 26004A)              | 26004-0033  | 3        |
| FUSE-ASSY,10A (Ref # 26004B)              | 26004-0034  | 6        |
| FUSE-ASSY,15A (Ref # 26004C)              | 26004-0037  | 2        |
| FUSE-ASSY,30A (Ref # 26004D)              | 26004-0043  | 2        |
| FUSE-ASSY,5A (Ref # 26004E)               | 26004-0044  | 2        |
| FUSE-ASSY,40A (Ref # 26004F)              | 26004-0048  | 2        |
| FUSE BOX (Ref # 26004G)                   | 26004-0050  | 1        |
| FUSE,MINI BLADE,25A,NATURAL (Ref # 26006) | 26006-0020  | 2        |
| HARNESS,ANTENNA (Ref # 26031)             | 26031-4238  | 1        |
| HARNESS,SUB,RELAY (Ref # 26031A)          | 26031-7181  | 1        |
| HARNESS,MAIN (Ref # 26031B)               | 26031-7282  | 1        |
| RELAY (Ref # 27034)                       | 27034-0013  | 6        |
| RELAY (Ref # 27034A)                      | 27034-0024  | 1        |
| RELAY (Ref # 27034B)                      | 27034-0028  | 1        |
| TAPE,HARNESS (Ref # 39188)                | 39188-0006  | AR       |
| TRIM,L=60 (Ref # 53044)                   | 53044-0651  | 1        |
| SCREW,TAPPING,6X16 (Ref # 92009)          | 92009-1166  | 2        |
| NUT,FLANGED,6MM (Ref # 92015)             | 92015-1367  | 1        |
| WASHER,6.5X16X1.6 (Ref # 92022)           | 92022-2247  | 2        |
| PLUG (Ref # 92066)                        | 92066-0908  | 1        |
| BAND,L=188 (Ref # 92072)                  | 92072-1239  | 2        |
| BAND,OS170-FT7(BLACK) (Ref # 92072A)      | 92072-1414  | AR       |
| BAND,L=292.1 (Ref # 92072B)               | 92072-3509  | 24       |
| BAND,L=368.3 (Ref # 92072C)               | 92072-3872  | 1        |

# 2026 Teryx4 H2

## PARTS LIST

### Chassis Electrical Equipment

| ITEM NAME                                    | PART NUMBER | QUANTITY |
|--|-------------|----------|
| COLLAR,6.3X9.5X4.1 (Ref # 92152)             | 92152-1571  | 2        |
| BOLT,FLANGED,6X16 (Ref # 92154)              | 92154-0551  | 4        |
| BOLT,FLANGED,6X12 (Ref # 92154A)             | 92154-7905  | 1        |
| CLAMP (Ref # 92171)                          | 92171-0739  | 1        |
| SCREW,6X16 (Ref # 92172)                     | 92172-0284  | 1        |
| SCREW,TAPPING,6X20 (Ref # 92172A)            | 92172-0488  | 4        |
| SCREW,TAPPING,6X16 (Ref # 92172B)            | 92172-0739  | 2        |
| CLAMP (Ref # 92173)                          | 92173-2792  | 1        |
| TUBE,CONVOLUTED,19.5X23.8X2185 (Ref # 92192) | 92192-2832  | 1        |
| TUBE,CONVOLUTED,5.2X7.8X1830 (Ref # 92192A)  | 92192-2850  | 1        |
| NUT (Ref # 92210)                            | 92210-1680  | 2        |
| BOLT-FLANGED-SMALL,5X8 (Ref # 132)           | 132BA0508   | 2        |
| NUT-HEX,6MM (Ref # 311)                      | 311BA0600   | 2        |
| WASHER-SPRING,6MM (Ref # 461)                | 461DA0600   | 2        |