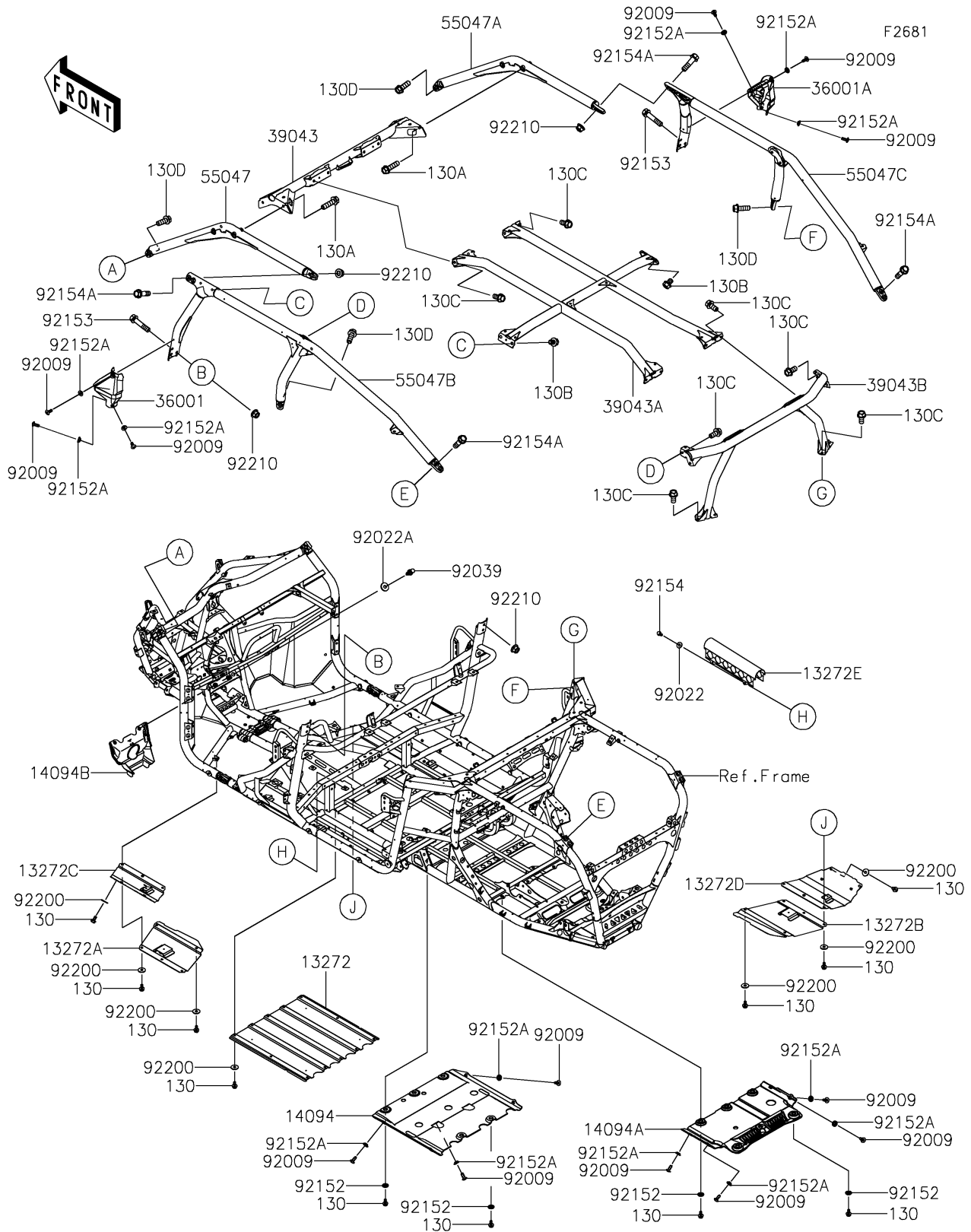


# 2026 Teryx4 H2

## PARTS DIAGRAM

### Guards/Cab Frame



# 2026 Teryx4 H2

## PARTS LIST

### Guards/Cab Frame

ITEM NAME	PART NUMBER	QUANTITY
PLATE,SKID,CNT (Ref # 13272)	13272-3963	1
PLATE,SKID,FR,CNT,LH (Ref # 13272A)	13272-4328	1
PLATE,SKID,FR,CNT,RH (Ref # 13272B)	13272-4329	1
PLATE,SKID,FR,LH (Ref # 13272C)	13272-4330	1
PLATE,SKID,FR,RH (Ref # 13272D)	13272-4331	1
PLATE,DRIVE SHAFT (Ref # 13272E)	13272-7108	1
COVER,SKID,CNT (Ref # 14094)	14094-0040	1
COVER,SKID,RR (Ref # 14094A)	14094-0178	1
COVER,TUNNEL (Ref # 14094B)	14094-0179	1
COVER-SIDE,B-PILLAR,LH (Ref # 36001)	36001-0782	1
COVER-SIDE,B-PILLAR,RH (Ref # 36001A)	36001-0783	1
CROSSMEMBER-COMP,FR,T.BLACK (Ref # 39043)	39043-0047-388	1
CROSSMEMBER-COMP,CNT,T.BLACK (Ref # 39043A)	39043-0048-388	1
CROSSMEMBER-COMP,RR,T.BLACK (Ref # 39043B)	39043-0049-388	1
BAR-COMP,A-PILLAR,LH,T.BLACK (Ref # 55047)	55047-0427-388	1
BAR-COMP,A-PILLAR,RH,T.BLACK (Ref # 55047A)	55047-0428-388	1
BAR-COMP,LH,T.BLACK (Ref # 55047B)	55047-0429-388	1
BAR-COMP,RH,T.BLACK (Ref # 55047C)	55047-0430-388	1
SCREW,TAPPING,6X16 (Ref # 92009)	92009-1166	16
WASHER,6.5X16X1.6 (Ref # 92022)	92022-2247	4
WASHER,8.4X23X2.5 (Ref # 92022A)	92022-3744	2
RIVET (Ref # 92039)	92039-0865	2
COLLAR (Ref # 92152)	92152-0784	11
COLLAR,6.3X9.5X4.1 (Ref # 92152A)	92152-1571	16
BOLT,FLANGED,12X55 (Ref # 92153)	92153-1766	4
BOLT,FLANGED,6X12 (Ref # 92154)	92154-2922	4
BOLT,FLANGED,12X45 (Ref # 92154A)	92154-7078	8
WASHER,6.5X20X1.6 (Ref # 92200)	92200-0283	26
NUT,LOCK,FLANGED,12MM (Ref # 92210)	92210-0110	8

# 2026 Teryx4 H2

## PARTS LIST

### Guards/Cab Frame

ITEM NAME	PART NUMBER	QUANTITY
BOLT-FLANGED,6X12 (Ref # 130)	130CA0612	37
BOLT-FLANGED,12X45 (Ref # 130A)	130CA1245	4
BOLT-FLANGED,12X16 (Ref # 130B)	130CB1216	4
BOLT-FLANGED,12X25 (Ref # 130C)	130CB1225	16
BOLT-FLANGED,12X35 (Ref # 130D)	130CB1235	8