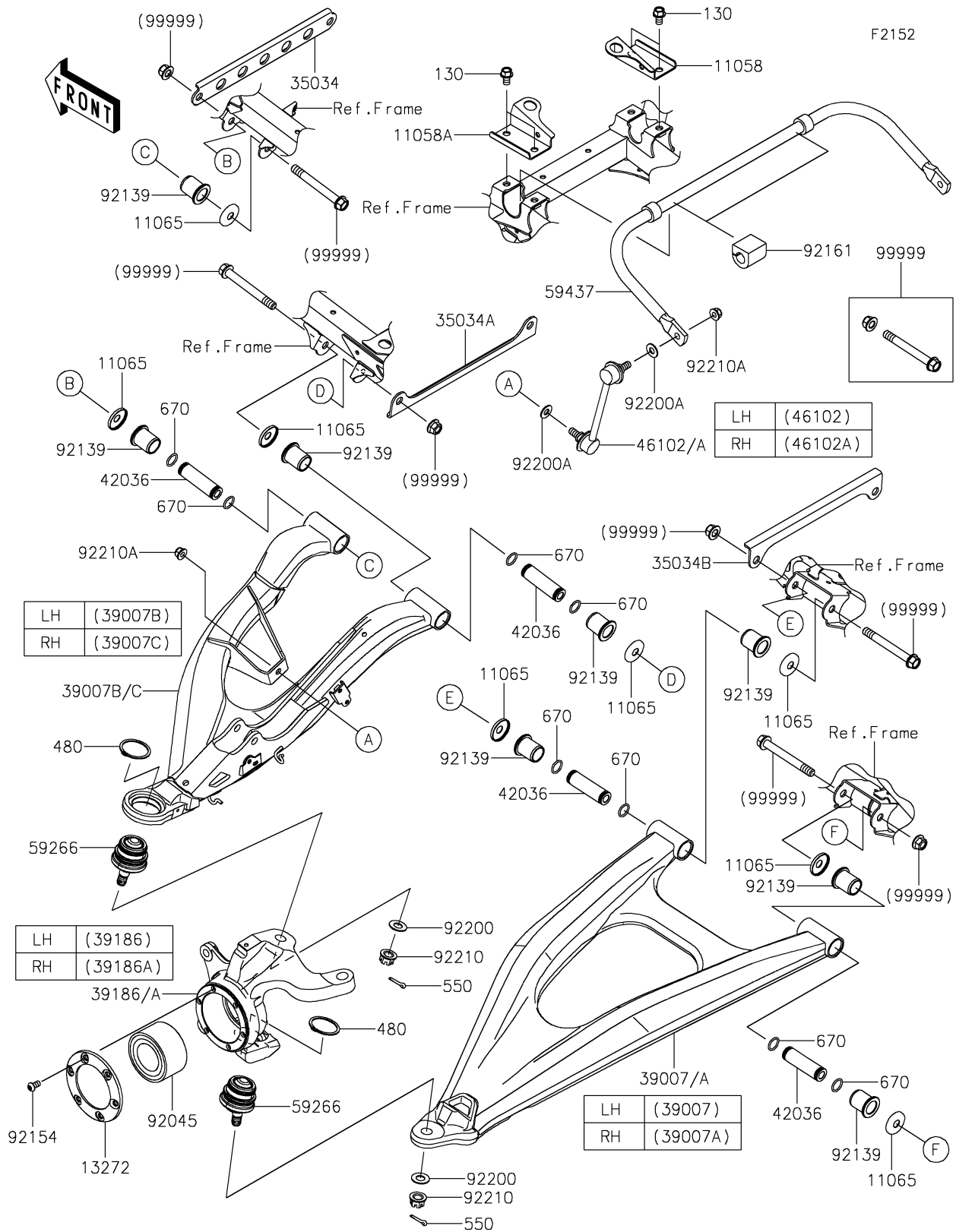


2026 TERYX® 4 H2

PARTS DIAGRAM

Front Suspension



2026 TERYX® 4 H2

PARTS LIST

Front Suspension

ITEM NAME	PART NUMBER	QUANTITY
BRACKET,FR STABILIZER,RH (Ref # 11058)	11058-3968	1
BRACKET,FR STABILIZER,LH (Ref # 11058A)	11058-3969	1
CAP,ARM (Ref # 11065)	11065-1522	16
PLATE,FR KNUCKLE (Ref # 13272)	13272-7279	2
REINFORCE,FR UPPER ARM,FR (Ref # 35034)	35034-0623	1
REINFORCE,FR UPPER ARM,RR (Ref # 35034A)	35034-0624	1
REINFORCE,FR LOWER ARM,FR (Ref # 35034B)	35034-0626	1
ARM-SUSP,FR,LWR,LH,BLACK (Ref # 39007)	39007-0518-10	1
ARM-SUSP,FR,LWR,RH,BLACK (Ref # 39007A)	39007-0519-10	1
ARM-SUSP,FR,UPP,LH,BLACK (Ref # 39007B)	39007-0534-10	1
ARM-SUSP,FR,UPP,RH,BLACK (Ref # 39007C)	39007-0535-10	1
KNUCKLE,FR,LH (Ref # 39186)	39186-0353	1
KNUCKLE,FR,RH (Ref # 39186A)	39186-0354	1
SLEEVE,12.1X22X76 (Ref # 42036)	42036-0836	8
ROD,STABILIZER,LH (Ref # 46102)	46102-0689	1
ROD,STABILIZER,RH (Ref # 46102A)	46102-0690	1
JOINT-BALL (Ref # 59266)	59266-0772	4
STABILIZER,FR (Ref # 59437)	59437-0034	1
BEARING-BALL,45X84X45 (Ref # 92045)	92045-1478	2
BUSHING (Ref # 92139)	92139-0937	16
BOLT,TORX,8X16 (Ref # 92154)	92154-7703	12
DAMPER (Ref # 92161)	92161-2413	2
WASHER,14.2X28X1.5 (Ref # 92200)	92200-0217	4
WASHER,10.3X23X1.6 (Ref # 92200A)	92200-0724	4
NUT,CASTLE,14MM (Ref # 92210)	92210-0104	4
NUT,LOCK,FLANGED,10MM (Ref # 92210A)	92210-1080	4
KIT,A-ARM FRAME BOLT (Ref # 99999)	99999-0982	8
BOLT-FLANGED,10X16 (Ref # 130)	130CA1016	4
CIRCLIP (Ref # 480)	480J4500	4

2026 TERYX® 4 H2

PARTS LIST

Front Suspension

ITEM NAME	PART NUMBER	QUANTITY
PIN-COTTER,3.0X25 (Ref # 550)	550AA3025	4
O RING,18MM (Ref # 670)	670B2018	16