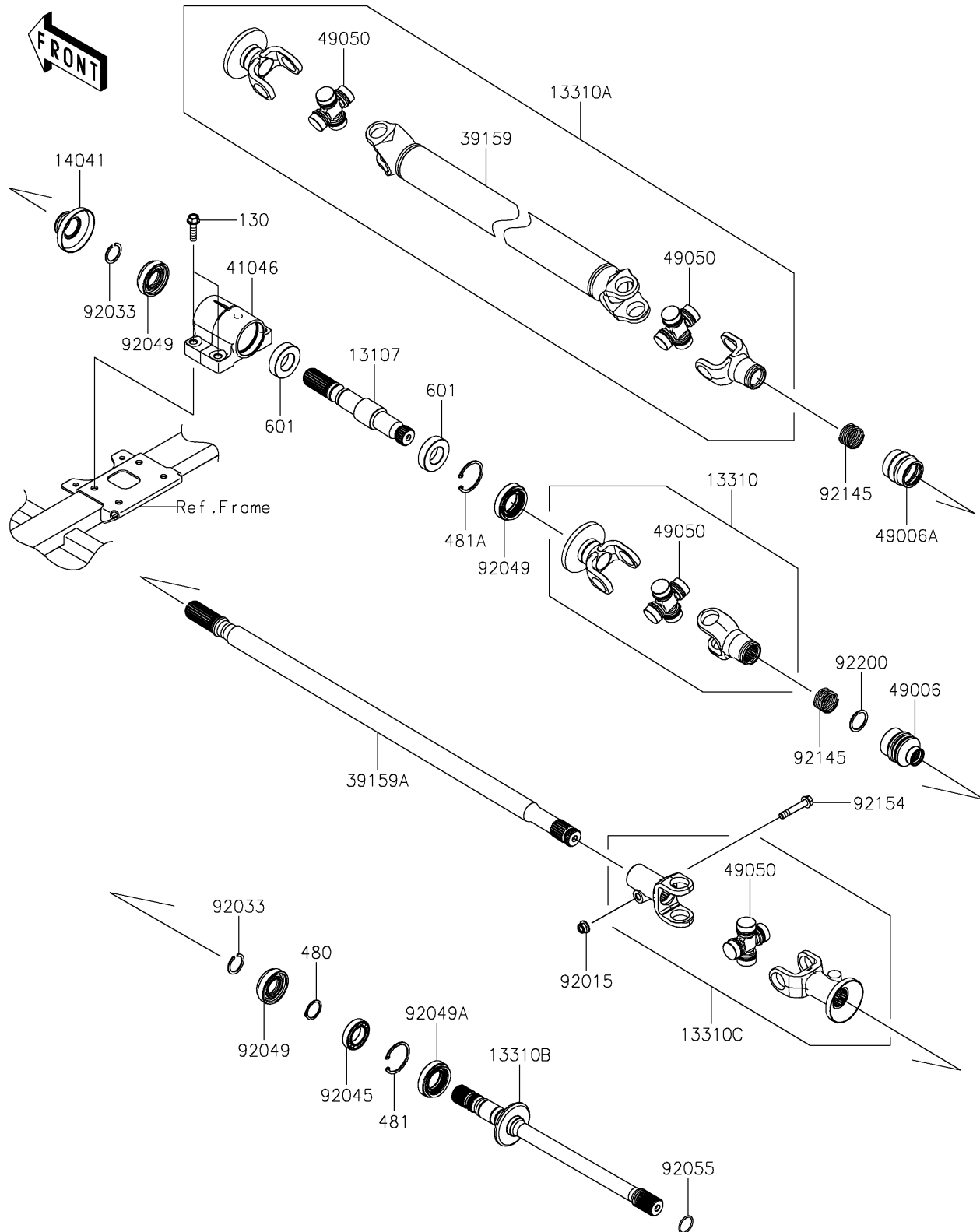


2026 TERYX® 4 H2

PARTS DIAGRAM

Drive Shaft-Propeller

E3135



2026 TERYX® 4 H2

PARTS LIST

Drive Shaft-Propeller

ITEM NAME	PART NUMBER	QUANTITY
SHAFT (Ref # 13107)	13107-1542	1
SHAFT-ASSY,BEARING SIDE (Ref # 13310)	13310-0050	1
SHAFT-ASSY (Ref # 13310A)	13310-0583	1
SHAFT-ASSY,REAR (Ref # 13310B)	13310-0585	1
SHAFT-ASSY,REAR GEAR SIDE (Ref # 13310C)	13310-0599	1
COVER-COMP (Ref # 14041)	14041-0631	1
SHAFT-DRIVE (Ref # 39159)	39159-0588	1
SHAFT-DRIVE,CENTER (Ref # 39159A)	39159-0593	1
HOUSING-BEARING (Ref # 41046)	41046-0042	1
BOOT,GEAR ASSY SIDE (Ref # 49006)	49006-0108	1
BOOT (Ref # 49006A)	49006-0646	1
SPIDER (Ref # 49050)	49050-0034	4
NUT,8MM (Ref # 92015)	92015-1432	1
RING-SNAP,25MM (Ref # 92033)	92033-1172	2
BEARING-BALL,#6905 (Ref # 92045)	92045-036	1
SEAL-OIL,TC9Y 25X48X10X17.2 (Ref # 92049)	92049-0817	3
SEAL-OIL,TC9Y 28X50X10X17.2 (Ref # 92049A)	92049-0818	1
RING-O,22.1X1.9 (Ref # 92055)	92055-1617	1
SPRING (Ref # 92145)	92145-1838	2
BOLT,FLANGED,8X46 (Ref # 92154)	92154-1365	1
WASHER,25X31X1.5 (Ref # 92200)	92200-0600	1
BOLT-FLANGED,8X30 (Ref # 130)	130BA0830	4
CIRCLIP-TYPE-C,25MM (Ref # 480)	480J2500	1
CIRCLIP-TYPE-C,42MM (Ref # 481)	481J4200	1
CIRCLIP-TYPE-C,47MM (Ref # 481A)	481J4700	1
BEARING-BALL (Ref # 601)	601A6005	2