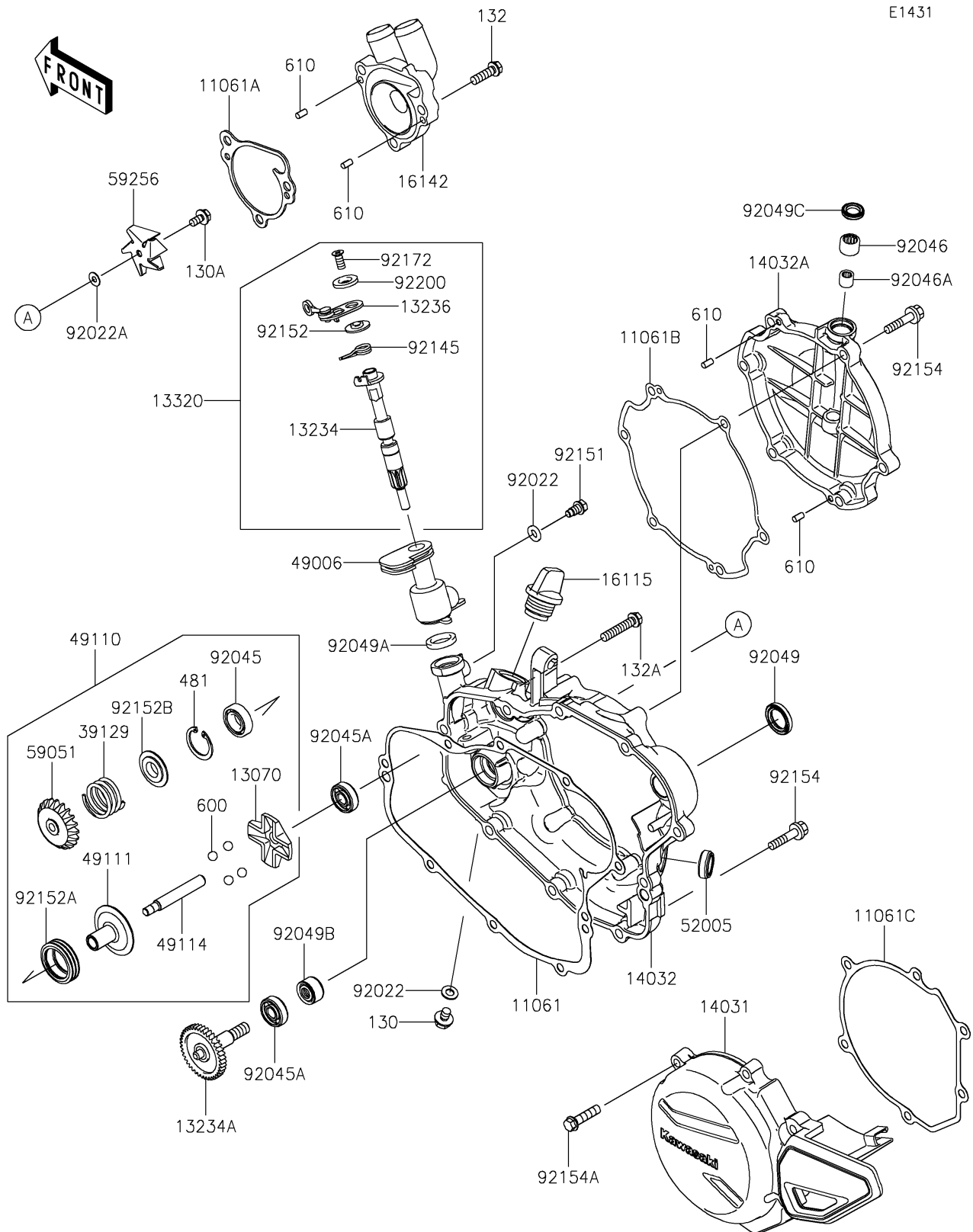


2026 KX™ 85 L

PARTS DIAGRAM

Engine Cover(s)

E1431



2026 KX™ 85 L

PARTS LIST

Engine Cover(s)

ITEM NAME	PART NUMBER	QUANTITY
GASKET,CLUTCH COVER (Ref # 11061)	11061-0122	1
GASKET,PUMP COVER (Ref # 11061A)	11061-0184	1
GASKET,CLUTCH COVER (Ref # 11061B)	11061-0869	1
GASKET,GENERATOR COVER (Ref # 11061C)	11061-1446	1
GUIDE,GOVERNOR (Ref # 13070)	13070-1309	1
SHAFT-COMP (Ref # 13234)	13234-0625	1
SHAFT-COMP,WATER PUMP (Ref # 13234A)	13234-1103	1
LEVER-COMP (Ref # 13236)	13236-0023	1
LEVER-ASSY (Ref # 13320)	13320-0581	1
COVER-GENERATOR (Ref # 14031)	14031-0674	1
COVER-CLUTCH,INSIDE (Ref # 14032)	14032-0041	1
COVER-CLUTCH,OUTSIDE (Ref # 14032A)	14032-1463	1
CAP-OIL FILLER (Ref # 16115)	16115-018	1
COVER-PUMP,WATER (Ref # 16142)	16142-1144	1
SPRING-GOVERNOR (Ref # 39129)	39129-1022	1
BOOT,GOVERNOR (Ref # 49006)	49006-1313	1
GOVERNOR-ASSY (Ref # 49110)	49110-0018	1
HOLDER-GOVERNOR WEIGHT (Ref # 49111)	49111-0003	1
SHAFT-GOVERNOR (Ref # 49114)	49114-0005	1
GAUGE,OIL LEVEL (Ref # 52005)	52005-0019	1
GEAR-SPUR (Ref # 59051)	59051-1412	1
IMPELLER (Ref # 59256)	59256-1064	1
WASHER,6.1X12X1 (Ref # 92022)	92022-077	2
WASHER,5.2X13X1 (Ref # 92022A)	92022-1380	1
BEARING-BALL (Ref # 92045)	92045-0010	1
BEARING-BALL,608MC3 (Ref # 92045A)	92045-1497	2
BEARING-NEEDLE,HK1010FM (Ref # 92046)	92046-0046	1
BEARING-NEEDLE,6BTM109 (Ref # 92046A)	92046-1217	1
SEAL-OIL,SB16244 (Ref # 92049)	92049-002	1

2026 KX™ 85 L

PARTS LIST

Engine Cover(s)

ITEM NAME	PART NUMBER	QUANTITY
SEAL-OIL,AG0353-F0 (Ref # 92049A)	92049-1262	1
SEAL-OIL,MHSD8X18X10J-1 (Ref # 92049B)	92049-1366	1
SEAL-OIL,BG1408F0 (Ref # 92049C)	92049-1414	1
SPRING (Ref # 92145)	92145-0089	1
BOLT,FLANGED,6X11 (Ref # 92151)	92151-1180	1
COLLAR,LEVER (Ref # 92152)	92152-0085	1
COLLAR (Ref # 92152A)	92152-2327	1
COLLAR (Ref # 92152B)	92152-2328	1
BOLT,FLANGED,6X25 (Ref # 92154)	92154-0520	14
BOLT,FLANGED,6X25 (Ref # 92154A)	92154-4428	6
SCREW,6X14 (Ref # 92172)	92172-0087	1
WASHER,LEVER (Ref # 92200)	92200-0040	1
BOLT-FLANGED,6X8 (Ref # 130)	130AA0608	1
BOLT-FLANGED,5X10 (Ref # 130A)	130CA0510	1
BOLT-FLANGED-SMALL,6X20 (Ref # 132)	132BA0620	3
BOLT-FLANGED-SMALL,6X30 (Ref # 132A)	132BA0630	1
CIRCLIP-TYPE-C,24MM (Ref # 481)	481J2400	1
BALL-STEEL,5/16 (Ref # 600)	600A1000	4
ROLLER,4X8 (Ref # 610)	610A0408	4