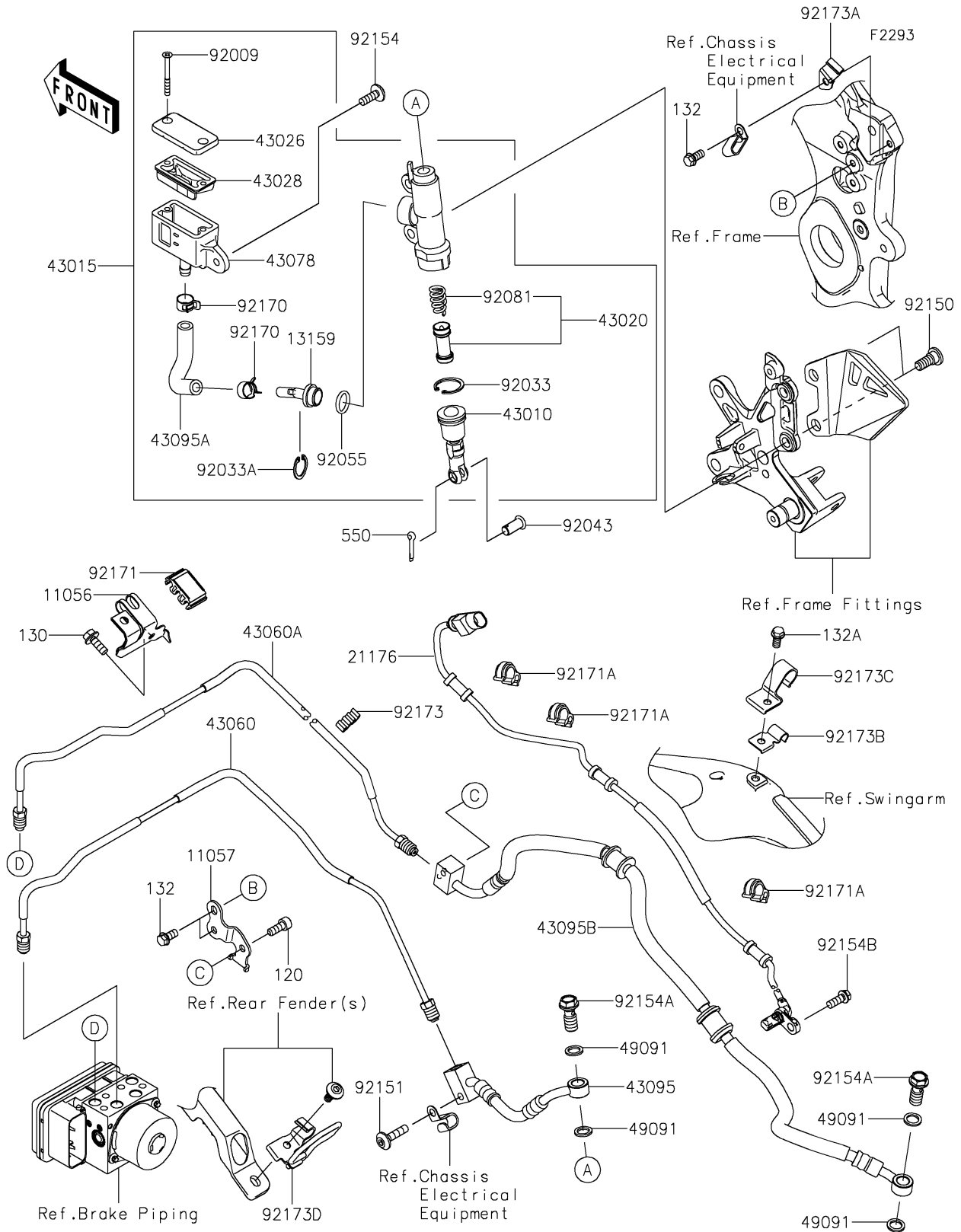


2026 Ninja ZX-10R ABS

PARTS DIAGRAM

Rear Master Cylinder



2026 Ninja ZX-10R ABS

PARTS LIST

Rear Master Cylinder

| ITEM NAME | PART NUMBER | QUANTITY |
|--|-------------|----------|
| BRACKET,UPP CROSS (Ref # 11056) | 11056-7960 | 1 |
| BRACKET (Ref # 11057) | 11057-4253 | 1 |
| CONNECTOR (Ref # 13159) | 13159-0009 | 1 |
| SENSOR,RR WHEEL (Ref # 21176) | 21176-0980 | 1 |
| ROD-ASSY-BRAKE (Ref # 43010) | 43010-0016 | 1 |
| CYLINDER-ASSY-MASTER,RR (Ref # 43015) | 43015-0775 | 1 |
| PISTON-COMP-BRAKE (Ref # 43020) | 43020-1057 | 1 |
| CAP-BRAKE (Ref # 43026) | 43026-0031 | 1 |
| DIAPHRAGM (Ref # 43028) | 43028-1067 | 1 |
| PIPE-BRAKE,RR M/CYLINDER-HU (Ref # 43060) | 43060-0095 | 1 |
| PIPE-BRAKE,ABS UNIT-SWA BKT (Ref # 43060A) | 43060-0328 | 1 |
| RESERVOIR (Ref # 43078) | 43078-1189 | 1 |
| HOSE-BRAKE,RR M/CYL.-SWA BKT (Ref # 43095) | 43095-0936 | 1 |
| HOSE-BRAKE,RR CALIPER (Ref # 43095A) | 43095-1518 | 1 |
| HOSE-BRAKE,SWA BKT-RR CAL. (Ref # 43095B) | 43095-1602 | 1 |
| WASHER-SEAL,10.1X14.5X1.5 (Ref # 49091) | 49091-0001 | 4 |
| SCREW,4X40 (Ref # 92009) | 92009-1596 | 2 |
| RING-SNAP,20.9X24.6X1.2 (Ref # 92033) | 92033-0079 | 1 |
| RING-SNAP,20.5MM (Ref # 92033A) | 92033-1186 | 1 |
| PIN (Ref # 92043) | 92043-0904 | 1 |
| RING-O,14.8X2.4 (Ref # 92055) | 92055-0741 | 1 |
| SPRING,MASTER CYLINDER (Ref # 92081) | 92081-1737 | 1 |
| BOLT,SOCKET,8X25 (Ref # 92150) | 92150-1837 | 2 |
| BOLT,SOCKET,6X25 (Ref # 92151) | 92151-1611 | 1 |
| BOLT,SOCKET,6X18 (Ref # 92154) | 92154-1694 | 1 |
| BOLT,BANJO,10X23 (Ref # 92154A) | 92154-1712 | 2 |
| BOLT,FLANGED,6X16 (Ref # 92154B) | 92154-4217 | 1 |
| CLAMP,HOSE (Ref # 92170) | 92170-1091 | 2 |
| CLAMP (Ref # 92171) | 92171-1731 | 1 |

2026 Ninja ZX-10R ABS

PARTS LIST

Rear Master Cylinder

| ITEM NAME | PART NUMBER | QUANTITY |
|--------------------------------------|-------------|----------|
| CLAMP,BRAKE HOSE (Ref # 92171A) | 92171-1819 | 3 |
| CLAMP (Ref # 92173) | 92173-0181 | 1 |
| CLAMP,MAIN FRAME,RR (Ref # 92173A) | 92173-1516 | 1 |
| CLAMP,SWING ARM,MID (Ref # 92173B) | 92173-1517 | 1 |
| CLAMP,SWING ARM,MID (Ref # 92173C) | 92173-1520 | 1 |
| CLAMP,SWING ARM,RR (Ref # 92173D) | 92173-2423 | 1 |
| BOLT-SOCKET,6X16 (Ref # 120) | 120CC0616 | 1 |
| BOLT-FLANGED,6X16 (Ref # 130) | 130BA0616 | 1 |
| BOLT-FLANGED-SMALL,6X12 (Ref # 132) | 132BA0612 | 3 |
| BOLT-FLANGED-SMALL,6X12 (Ref # 132A) | 132BB0612 | 1 |
| PIN-COTTER,2.0X15 (Ref # 550) | 550AA2015 | 1 |