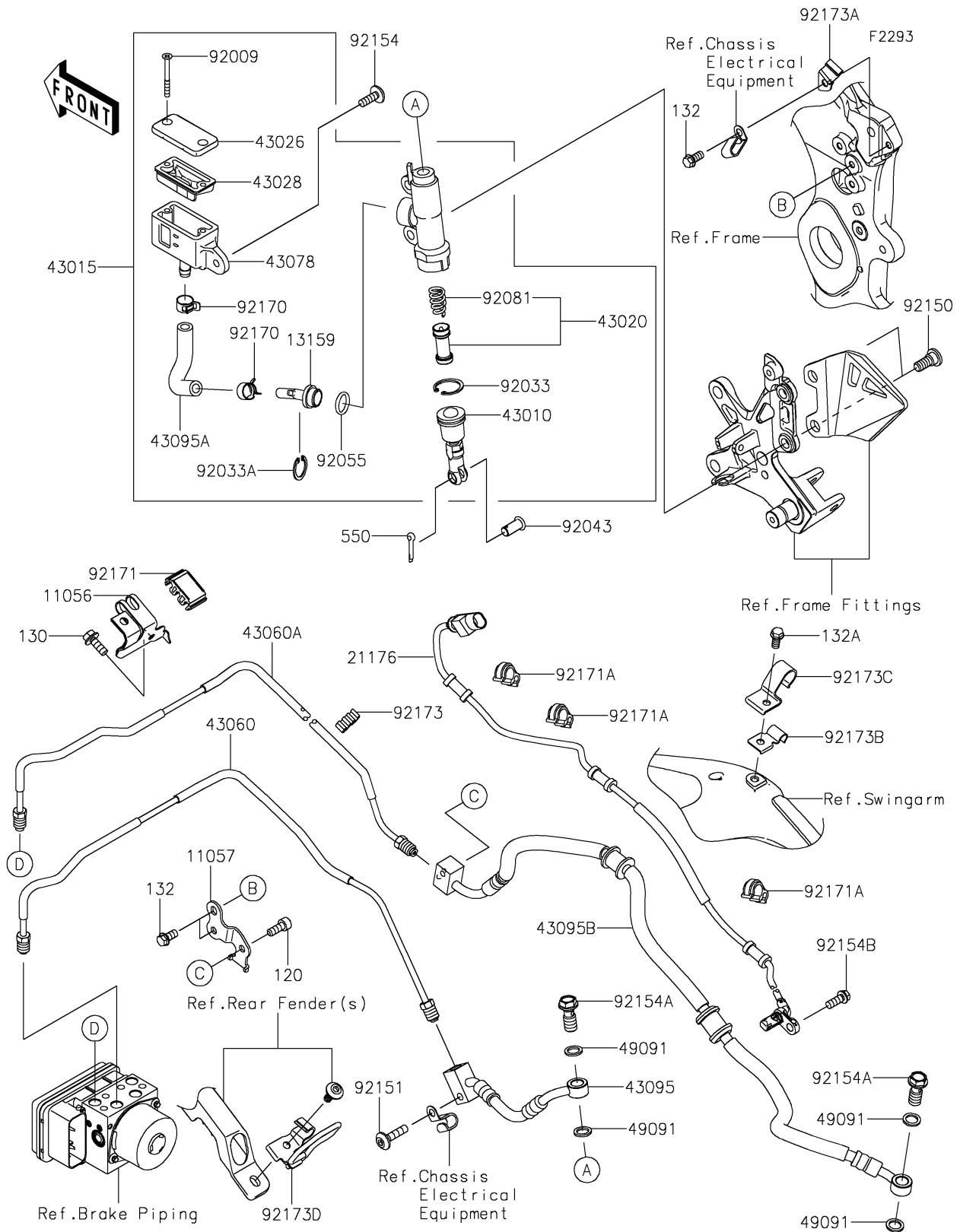


2026 NINJA® ZX™-10R ABS

PARTS DIAGRAM

Rear Master Cylinder



2026 NINJA® ZX™-10R ABS

PARTS LIST

Rear Master Cylinder

ITEM NAME	PART NUMBER	QUANTITY
BRACKET,UPP CROSS (Ref # 11056)	11056-7960	1
BRACKET (Ref # 11057)	11057-4253	1
CONNECTOR (Ref # 13159)	13159-0009	1
SENSOR,RR WHEEL (Ref # 21176)	21176-0980	1
ROD-ASSY-BRAKE (Ref # 43010)	43010-0016	1
CYLINDER-ASSY-MASTER,RR (Ref # 43015)	43015-0775	1
PISTON-COMP-BRAKE (Ref # 43020)	43020-1057	1
CAP-BRAKE (Ref # 43026)	43026-0031	1
DIAPHRAGM (Ref # 43028)	43028-1067	1
PIPE-BRAKE,RR M/CYLINDER-HU (Ref # 43060)	43060-0095	1
PIPE-BRAKE,ABS UNIT-SWA BKT (Ref # 43060A)	43060-0328	1
RESERVOIR (Ref # 43078)	43078-1189	1
HOSE-BRAKE,RR M/CYL.-SWA BKT (Ref # 43095)	43095-0936	1
HOSE-BRAKE,RR CALIPER (Ref # 43095A)	43095-1518	1
HOSE-BRAKE,SWA BKT-RR CAL. (Ref # 43095B)	43095-1602	1
WASHER-SEAL,10.1X14.5X1.5 (Ref # 49091)	49091-0001	4
SCREW,4X40 (Ref # 92009)	92009-1596	2
RING-SNAP,20.9X24.6X1.2 (Ref # 92033)	92033-0079	1
RING-SNAP,20.5MM (Ref # 92033A)	92033-1186	1
PIN (Ref # 92043)	92043-0904	1
RING-O,14.8X2.4 (Ref # 92055)	92055-0741	1
SPRING,MASTER CYLINDER (Ref # 92081)	92081-1737	1
BOLT,SOCKET,8X25 (Ref # 92150)	92150-1837	2
BOLT,SOCKET,6X25 (Ref # 92151)	92151-1611	1
BOLT,SOCKET,6X18 (Ref # 92154)	92154-1694	1
BOLT,BANJO,10X23 (Ref # 92154A)	92154-1712	2
BOLT,FLANGED,6X16 (Ref # 92154B)	92154-4217	1
CLAMP,HOSE (Ref # 92170)	92170-1091	2
CLAMP (Ref # 92171)	92171-1731	1

2026 NINJA® ZX™-10R ABS

PARTS LIST

Rear Master Cylinder

ITEM NAME	PART NUMBER	QUANTITY
CLAMP,BRAKE HOSE (Ref # 92171A)	92171-1819	3
CLAMP (Ref # 92173)	92173-0181	1
CLAMP,MAIN FRAME,RR (Ref # 92173A)	92173-1516	1
CLAMP,SWING ARM,MID (Ref # 92173B)	92173-1517	1
CLAMP,SWING ARM,MID (Ref # 92173C)	92173-1520	1
CLAMP,SWING ARM,RR (Ref # 92173D)	92173-2423	1
BOLT-SOCKET,6X16 (Ref # 120)	120CC0616	1
BOLT-FLANGED,6X16 (Ref # 130)	130BA0616	1
BOLT-FLANGED-SMALL,6X12 (Ref # 132)	132BA0612	3
BOLT-FLANGED-SMALL,6X12 (Ref # 132A)	132BB0612	1
PIN-COTTER,2.0X15 (Ref # 550)	550AA2015	1